

(MARC'S, QERVO3) 27NOV25

QERVO THREE ARRIVAL (RNAV) Transition Routes

SAN ANTONIO, TEXAS

SAN ANTONIO APP CON
127.1 269.1
BAZ ATIS
119.325
KRND ATIS ★
290.525
SAT D-ATIS
118.9
SKF ATIS
120.45 273.5
SSF ATIS
128.8

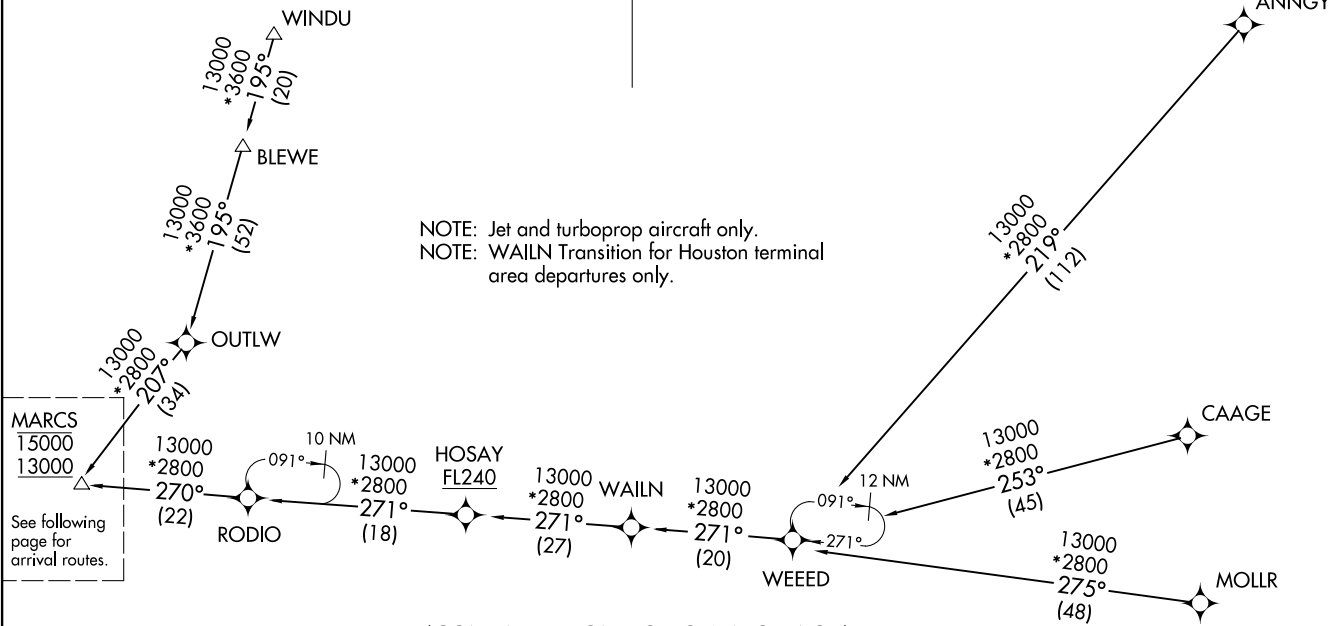
RNAV 1-DME/DME/IRU or GPS.
RADAR required.

ANNGY TRANSITION (ANNGY.QERVO3)
BLEWE TRANSITION (BLEWE.QERVO3)
CAAGE TRANSITION (CAAGE.QERVO3)
MOLLR TRANSITION (MOLLR.QERVO3)
WAILN TRANSITION (WAILN.QERVO3)
WINDU TRANSITION (WINDU.QERVO3)

(MARC'S, QERVO3) 25331

AL-369 (FAA)
QERVO THREE ARRIVAL (RNAV) Transition Routes

SAN ANTONIO, TEXAS



MARC'S
15000
13000
See following page for arrival routes.

(CONTINUED ON FOLLOWING PAGE)

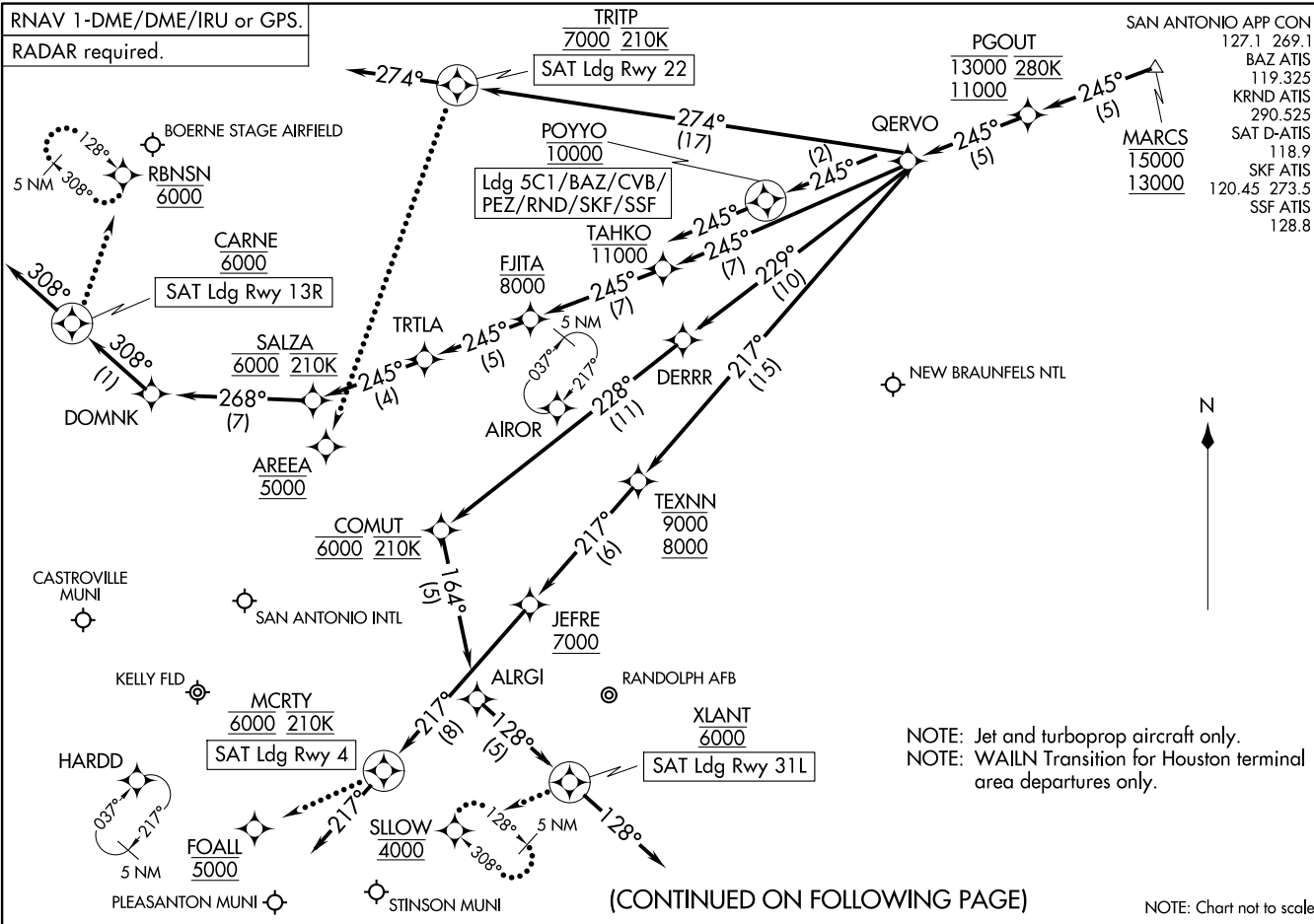
NOTE: Chart not to scale.

QERVO THREE ARRIVAL (RNAV) Arrival Routes
(MARC3, QERV03) 27NOV25

(MARC3, QERV03) 25331
ALC-369 (FAA)
QERVO THREE ARRIVAL (RNAV) Arrival Routes

SAN ANTONIO, TEXAS

RNAV 1-DME/DME/IRU or GPS.
RADAR required.



SAN ANTONIO APP CON
127.1 269.1
BAZ ATIS
119.325
KRND ATIS
290.525
SAT D-ATIS
118.9
SKF ATIS
120.45 273.5
SSF ATIS
128.8

MARC3
15000
13000

NOTE: Jet and turboprop aircraft only.
NOTE: WAILN Transition for Houston terminal area departures only.

(CONTINUED ON FOLLOWING PAGE)

NOTE: Chart not to scale.

SAN ANTONIO, TEXAS

QERVO THREE ARRIVAL (RNAV)

SAN ANTONIO, TEXAS

ARRIVAL ROUTE DESCRIPTION

SAN ANTONIO INTL (SAT): From MARCS on track 245° to cross PGOUT between 11000 and 13000 and at 280K, then on track 245° to QERVO.

LANDING SAT RUNWAY 4: From QERVO on track 217° to cross TEXNN between 8000 and 9000, then on track 217° to cross JEFRE at or above 7000, then on track 217° to cross MCRTY at 6000 and at 210K, then on track 217°. Expect RADAR vectors to final approach course.

LANDING SAT RUNWAY 13R: From QERVO on track 245° to cross TAHKO at or below 11000, then on track 245° to cross FJITA at or below 8000, then on track 245° to TRTLA, then on track 246° to cross SALZA at 6000 and at 210K, then on track 268° to DOMNK, then on track 308° to cross CARNE at 6000, then on track 308°. Expect RADAR vectors to final approach course.

LANDING SAT RUNWAY 22: From QERVO on track 274° to cross TRITP at 7000 and at 210K, then on track 274°. Expect RADAR vectors to final approach course.

LANDING SAT RUNWAY 31L: From QERVO on track 229° to DERRR, then on track 228° to cross COMUT at 6000 and at 210K, then on track 164° to ALRGI, then on track 128° to cross XLANT at 6000, then on track 128°. Expect RADAR vectors to final approach course.

LANDING SKF/BAZ/CVB/SSF/PEZ/5C1/RND: From MARCS on track 245° to cross PGOUT between 11000 and 13000 and at 280K, then on track 245° to QERVO, then on track 245° to cross POYYO at 10000, then on track 245°. Expect RADAR vectors to final approach course.

LOST COMMUNICATIONS

SAT RUNWAY 4: After MCRTY, proceed to FOALL at 5000, then on ILS or LOC RWY 4 or RNAV (GPS) Y RWY 4 approach.

SAT RUNWAY 13R: After CARNE, proceed to RBNSN at 6000 and hold.

SAT RUNWAY 22: After TRITP proceed to AREEA at 5000, then on RNAV (GPS) Y RWY 22 approach.

SAT RUNWAY 31L: After XLANT, proceed to SLOW at 4000 and hold.

SC-3, 14 MAY 2026 to 11 JUN 2026

SC-3, 14 MAY 2026 to 11 JUN 2026