

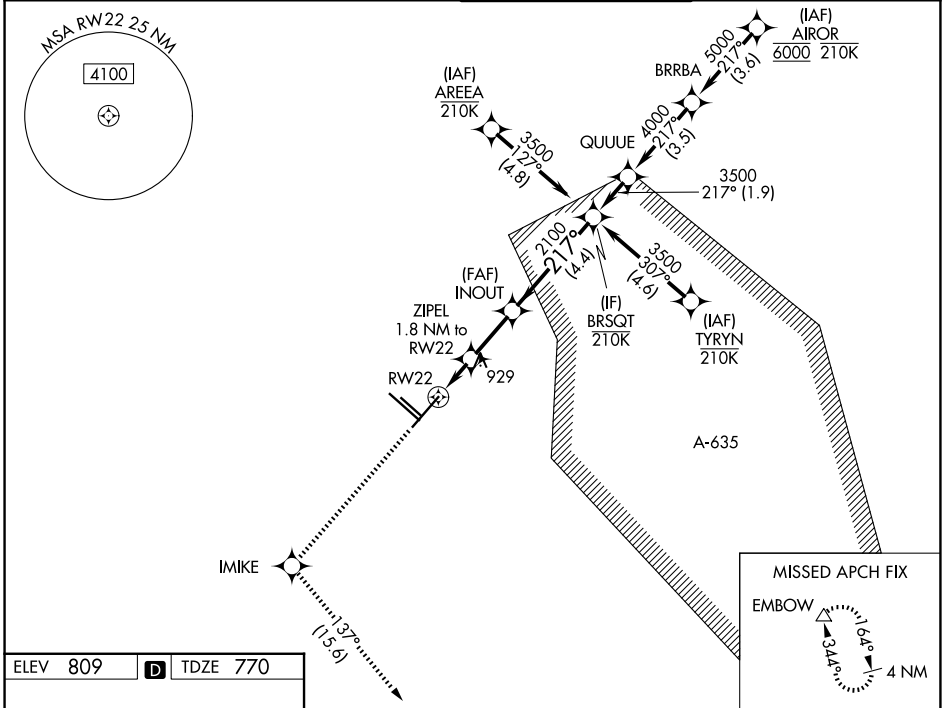
WAAS CH 69430 W22A	APP CRS 217°	Rwy Ldg TDZE 770 Apt Elev 809
--	------------------------	---

RNAV (GPS) Y RWY 22

SAN ANTONIO INTL (SAT)

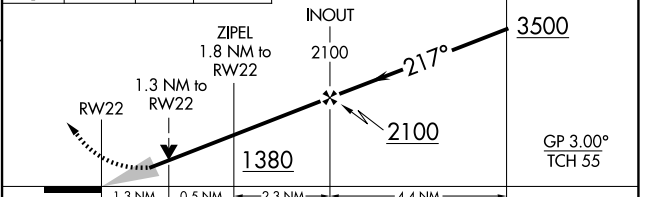
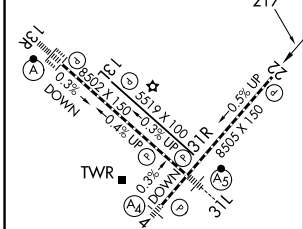
RNP APCH - GPS.	MISSED APPROACH: Climb to 3100 direct IMIKE and on track 137° to EMBOW and hold.
▼ For uncompensated Baro-VNAV systems, LNAV/VNAV NA below -6°C or above 54°C. ▲ Circling NA northwest of Rwy 4 and 13R.	

D-ATIS 118.9	SAN ANTONIO APP CON 125.1 307.0	SAN ANTONIO TOWER 119.8 257.8	GND CON 121.9 348.6
------------------------	---	---	-------------------------------



ELEV 809	D	TDZE 770
----------	----------	----------

3100	IMIKE	tr 137°	EMBOW	VGSI and RNAV glidepath not coincident (VGSI Angle 3.00/TCH 85).
------	-------	---------	-------	--



CATEGORY	A	B	C	D
LPV DA	970-3/4		200 (200-3/4)	
LNAV/VNAV DA	1240-1 3/8		470 (500-1 3/8)	
LNAV MDA	1240-1	470 (500-1)	1240-1 3/8	470 (500-1 3/8)
CIRCLING	1280-1 471 (500-1)	1340-1 531 (600-1)	1420-1 3/4 611 (700-1 3/4)	1540-2 1/4 731 (800-2 1/4)

TDZL/RCLS Rwy 13R
REIL Rwy 13L, 22 and 31R
HIRL Rwy 4-22 and 13R-31L
MIRL Rwy 13L-31R

SC-3, 14 MAY 2026 to 11 JUN 2026

SC-3, 14 MAY 2026 to 11 JUN 2026