

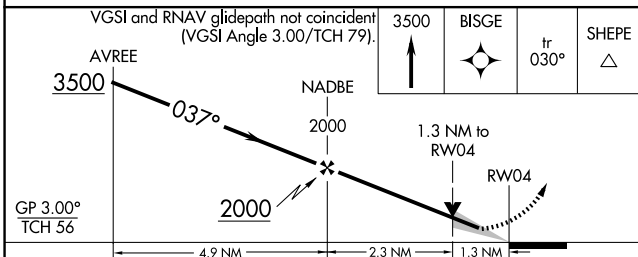
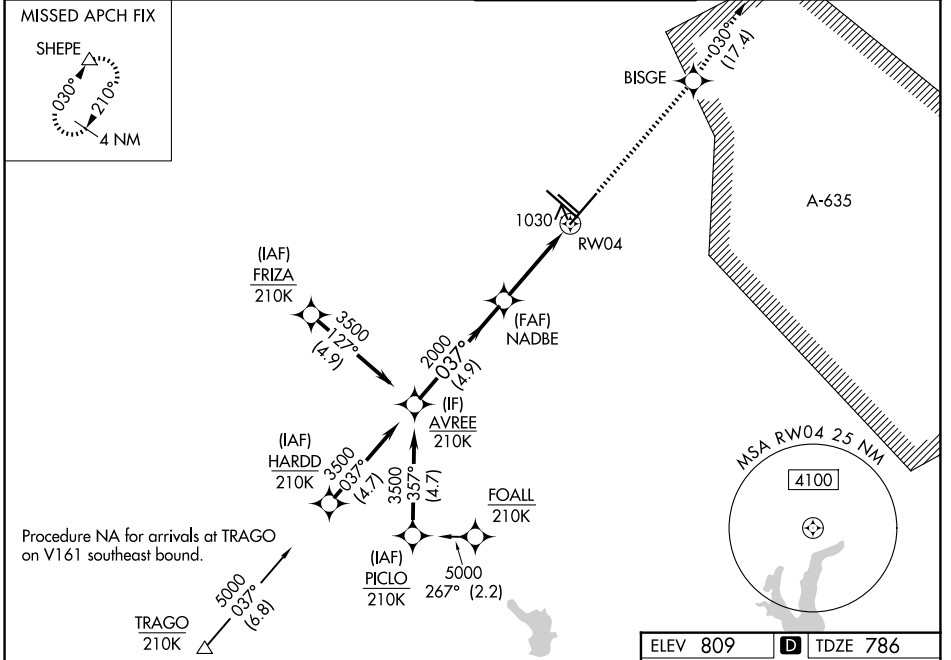
WAAS CH <b>77613</b> <b>W04A</b>	APP CRS <b>037°</b>	Rwy Ldg TDZE Apt Elev	<b>8505</b> <b>786</b> <b>809</b>
--	------------------------	-----------------------------	---

# RNAV (GPS) Y RWY 4

SAN ANTONIO INTL (SAT)

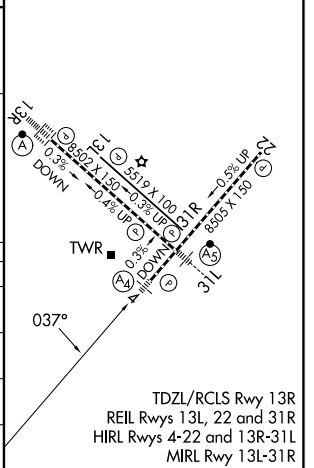
RNP APCH - GPS.		MALS	MISSED APPROACH: Climb to 3500 direct BISGE and track 030° to SHEPE and hold.
<p>▼ Circling NA northwest of Rws 4 and 13R. Inop table does not apply to LPV. For uncompensated Baro-VNAV systems, LNAV/VNAV NA below -5°C or above 54°C.                  ▲ For inop ALS, increase LNAV/VNAV all Cts visibility to RVR 6000. Increase LNAV Cts A/B visibility to RVR 5500 and LNAV Cts C/D visibility to 1% SM.</p>			

D-ATIS <b>118.9</b>	SAN ANTONIO APP CON <b>125.1 307.0</b>	SAN ANTONIO TOWER <b>119.8 257.8</b>	GND CON <b>121.9 348.6</b>
------------------------	---	---	-------------------------------



ELEV 809	<b>D</b> TDZE 786
----------	-------------------

CATEGORY	A	B	C	D
LPV DA		986/40	200 (200-¾)	
LNAV/VNAV DA		1201/50	415 (400-1)	
LNAV MDA	1280/40	494 (500-¾)	1280/60	494 (500-1¼)
CIRCLING	1280-1 471 (500-1)	1340-1 531 (600-1)	1420-1¾ 611 (700-1¾)	1520-2¼ 711 (800-2¼)



SC-3, 14 MAY 2026 to 11 JUN 2026

SC-3, 14 MAY 2026 to 11 JUN 2026