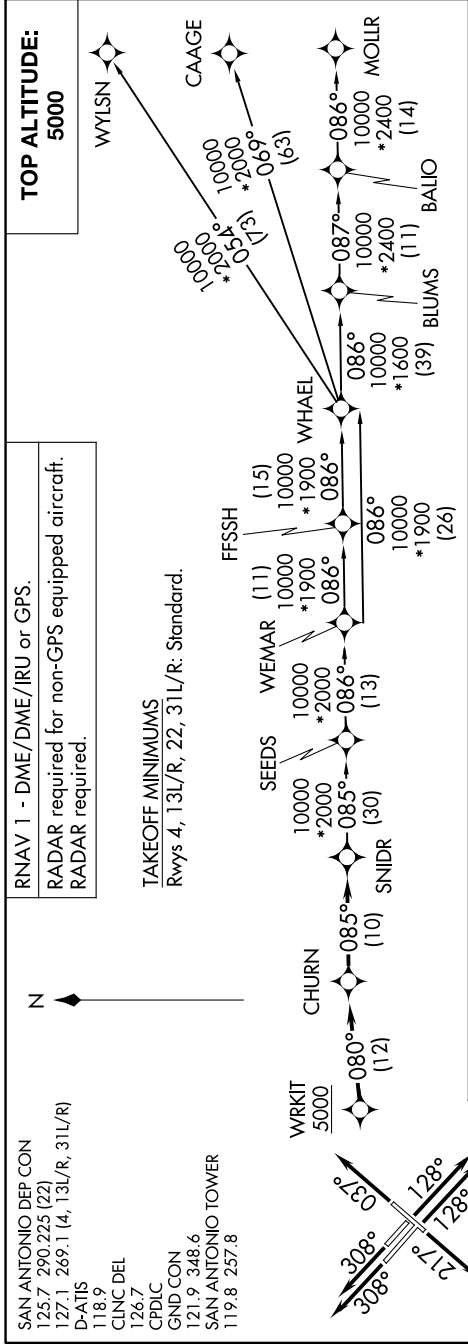


SNIDR TWO DEPARTURE (RNAV)

SC-3, 14 MAY 2026 to 11 JUN 2026



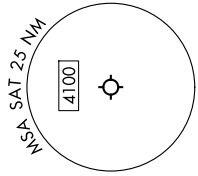
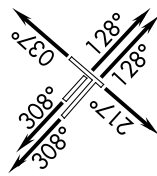
DEPARTURE ROUTE DESCRIPTION

▼ TAKEOFF RUNWAY 4: Climb on heading 037° or as assigned by ATC, for vectors to WRKIT, thence...
 TAKEOFF RUNWAYS 13L/R: Climb on heading 128° or as assigned by ATC, for vectors to WRKIT, thence...
 TAKEOFF RUNWAY 22: Climb on heading 217° or as assigned by ATC, for vectors to WRKIT, thence...
 TAKEOFF RUNWAYS 31L/R: Climb on heading 308° or as assigned by ATC, for vectors to WRKIT, thence...

... on track 080° to CHURN, then on track 085° to SNIDR, then on transition. Maintain 5000. Expect filed altitude 10 minutes after departure.

- BLUMS TRANSITION (SNIDR2.BLUMS)
- CAAGE TRANSITION (SNIDR2.CAAGE)
- FFSSH TRANSITION (SNIDR2.FSSH)
- MOLLR TRANSITION (SNIDR2.MOLLR)
- SEEDS TRANSITION (SNIDR2.SEEDS)
- WEMAR TRANSITION (SNIDR2.WEMAR)
- WHAEL TRANSITION (SNIDR2.WHAEL)
- WYLSN TRANSITION (SNIDR2.WYLSN)

SAN ANTONIO DEP CON
125.7 290.225 (22)
127.1 269.1 (4, 13L/R, 31L/R)
D-ATIS
118.9
CLINC DEL
126.7
CPDLC
GND CON
121.9 348.6
SAN ANTONIO TOWER
119.8 257.8



NOTE: Chart not to scale.

SNIDR TWO DEPARTURE (RNAV)

SC-3, 14 MAY 2026 to 11 JUN 2026