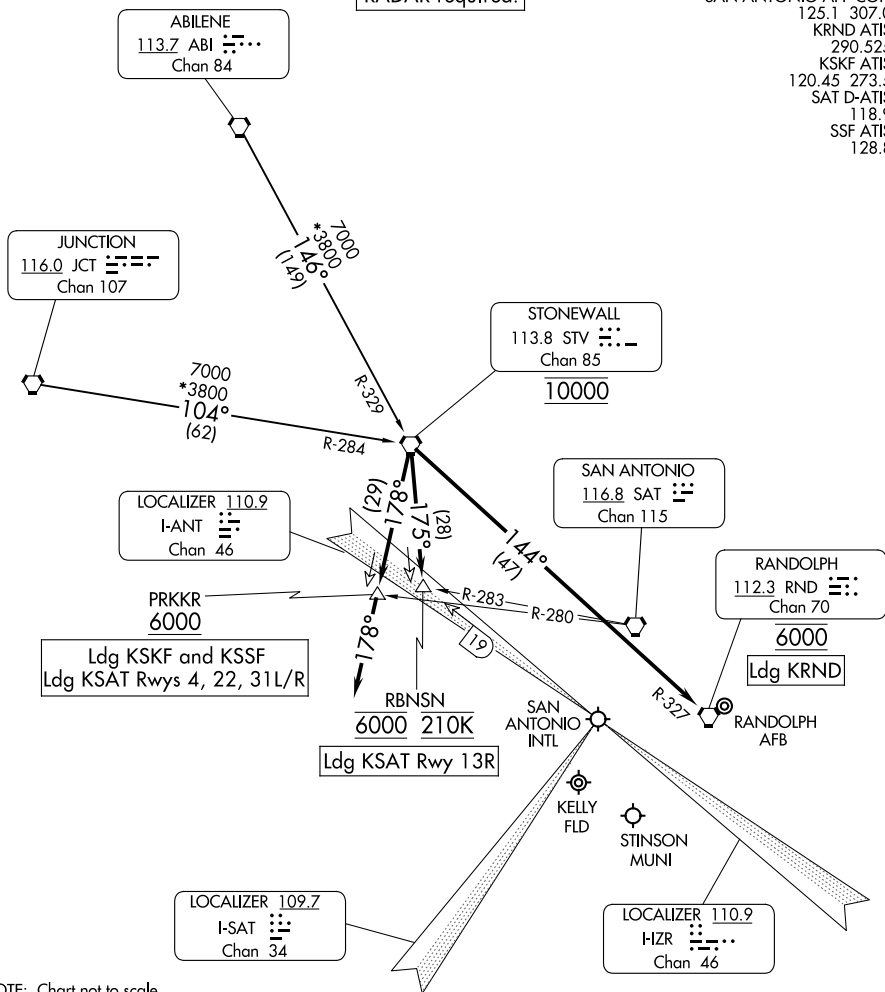


# STONEWALL TWO ARRIVAL

SAN ANTONIO, TEXAS

RADAR required.

SAN ANTONIO APP CON  
 125.1 307.0  
 KRND ATIS\*  
 290.525  
 KSKF ATIS  
 120.45 273.5  
 SAT D-ATIS  
 118.9  
 SSF ATIS  
 128.8



SC-3, 14 MAY 2026 to 11 JUN 2026

SC-3, 14 MAY 2026 to 11 JUN 2026

NOTE: Chart not to scale.

## ARRIVAL ROUTE DESCRIPTION

**ABILENE TRANSITION (ABI.STV2):** From over ABI VORTAC on ABI R-146 and STV R-329 to STV VORTAC. Thence . . . .

**JUNCTION TRANSITION (JCT.STV2):** From over JCT VORTAC on JCT R-104 and STV R-284 to STV VORTAC. Thence . . . .

**LANDING KSAT RUNWAY 13R:** From STV VORTAC on STV R-175 to cross RBNSN at 6000 and at 210K, expect ILS or LOC Rwy 13R approach.

**LANDING KSAT RUNWAYS 4, 22, 31L/R, KSKF/KSSF:** From STV VORTAC on STV R-178 to cross PRKKR at or above 6000, then on heading 178°, expect RADAR vectors to final approach course.

**LANDING KRND:** From STV VORTAC on STV R-144 and RND R-327 to cross RND VORTAC at 6000, expect RADAR vectors to final approach course.

# STONEWALL TWO ARRIVAL

SAN ANTONIO, TEXAS