

(TJANO2.TJANO) 25219

AL-369 (FAA)

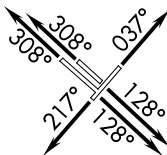
SAN ANTONIO INTL (SAT)
SAN ANTONIO, TEXAS

TJANO TWO DEPARTURE (RNAV)

SAN ANTONIO DEP CON
125.7 290.225 (13L/R, 22, 31L/R)
127.1 269.1 (4)
D-ATIS
118.9
CLNC DEL
126.7
CPDLC
GND CON
121.9 348.6
SAN ANTONIO TOWER
119.8 257.8

RNAV 1 - DME/DME IRU or GPS.
RADAR required for non-GPS
equipped aircraft. RADAR required.

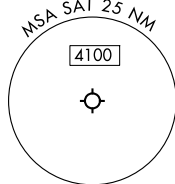
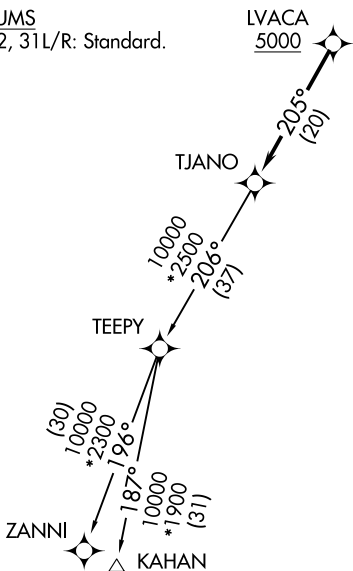
**TOP ALTITUDE:
5000**



TAKEOFF MINIMUMS

Rwys 4, 13L/R, 22, 31L/R: Standard.

LVACA
5000



NOTE: Chart not to scale.

DEPARTURE ROUTE DESCRIPTION

TAKEOFF RUNWAY 4: Climb on heading 037° or as assigned by ATC, for vectors to LVACA, thence. . .

TAKEOFF RUNWAYS 13L/R: Climb on heading 128° or as assigned by ATC, for vectors to LVACA, thence. . .

TAKEOFF RUNWAY 22: Climb on heading 217° or as assigned by ATC, for vectors to LVACA, thence. . .

TAKEOFF RUNWAYS 31L/R: Climb on heading 308° or as assigned by ATC, for vectors to LVACA, thence. . .

. . . on track 205° to TJANO, then on transition. Maintain 5000. Expect filed altitude 10 minutes after departure.

KAHAN TRANSITION (TJANO2.KAHAN)
ZANNI TRANSITION (TJANO2.ZANNI)

TJANO TWO DEPARTURE (RNAV)
(TJANO2.TJANO) 07AUG25

SAN ANTONIO, TEXAS
SAN ANTONIO INTL (SAT)

SC-3, 14 MAY 2026 to 11 JUN 2026

SC-3, 14 MAY 2026 to 11 JUN 2026