

(YODUH2.YODUH) 25219

AL-369 (FAA)

SAN ANTONIO INTL (SAT)

# YODUH TWO DEPARTURE (RNAV)

SAN ANTONIO, TEXAS

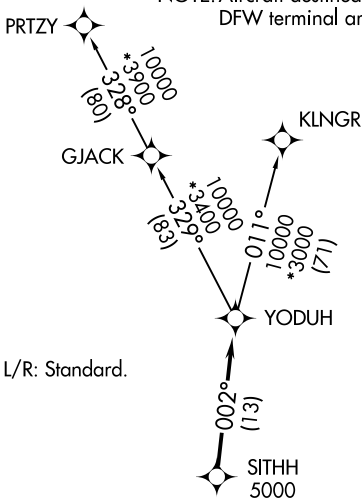
SAN ANTONIO DEP CON  
 125.1 307.0 (31L/R)  
 125.7 290.225 (22)  
 127.1 269.1 (4, 13L/R)  
 D-ATIS  
 118.9  
 CLNC DEL  
 126.7  
 CPDLC  
 GND CON  
 121.9 348.6  
 SAN ANTONIO TOWER  
 119.8 257.8

RNAV 1 - DME/DME IRU or GPS.

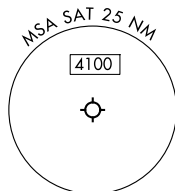
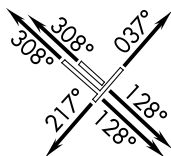
RADAR required for non-GPS equipped aircraft. RADAR required.

**TOP ALTITUDE:  
5000**

NOTE: Aircraft destined for airports north/northeast of DFW terminal area must file the KLNGR Transition.



**TAKEOFF MINIMUMS**  
Rwys 4, 13L/R, 22, 31L/R: Standard.



NOTE: Chart not to scale.

## DEPARTURE ROUTE DESCRIPTION

**TAKEOFF RUNWAY 4:** Climb on heading 037° or as assigned by ATC, for vectors to SITHH, thence. . .

**TAKEOFF RUNWAYS 13L/R:** Climb on heading 128° or as assigned by ATC, for vectors to SITHH, thence. . .

**TAKEOFF RUNWAY 22:** Climb on heading 217° or as assigned by ATC, for vectors to SITHH, thence. . .

**TAKEOFF RUNWAYS 31L/R:** Climb on heading 308° or as assigned by ATC, for vectors to SITHH, thence. . .

. . .on track 002° to YODUH, then on transition. Maintain 5000. Expect filed altitude 10 minutes after departure.

KLNGR TRANSITION (YODUH2.KLNGR)  
PRTZY TRANSITION (YODUH2.PRTZY)

**YODUH TWO DEPARTURE (RNAV)**  
(YODUH2.YODUH) 07AUG25

SAN ANTONIO, TEXAS  
SAN ANTONIO INTL (SAT)

SC-3, 14 MAY 2026 to 11 JUN 2026

SC-3, 14 MAY 2026 to 11 JUN 2026