

# HI-ILS or LOC/DME Z RWY 16

LOC I-SKF <b>110.1</b>	APCH CRS <b>158°</b>	Rwy Idg <b>11,550</b> TDZE <b>690</b> Arprt Elev <b>690</b>
---------------------------	-------------------------	---

[USAF]

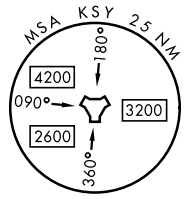
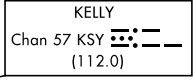
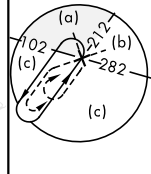
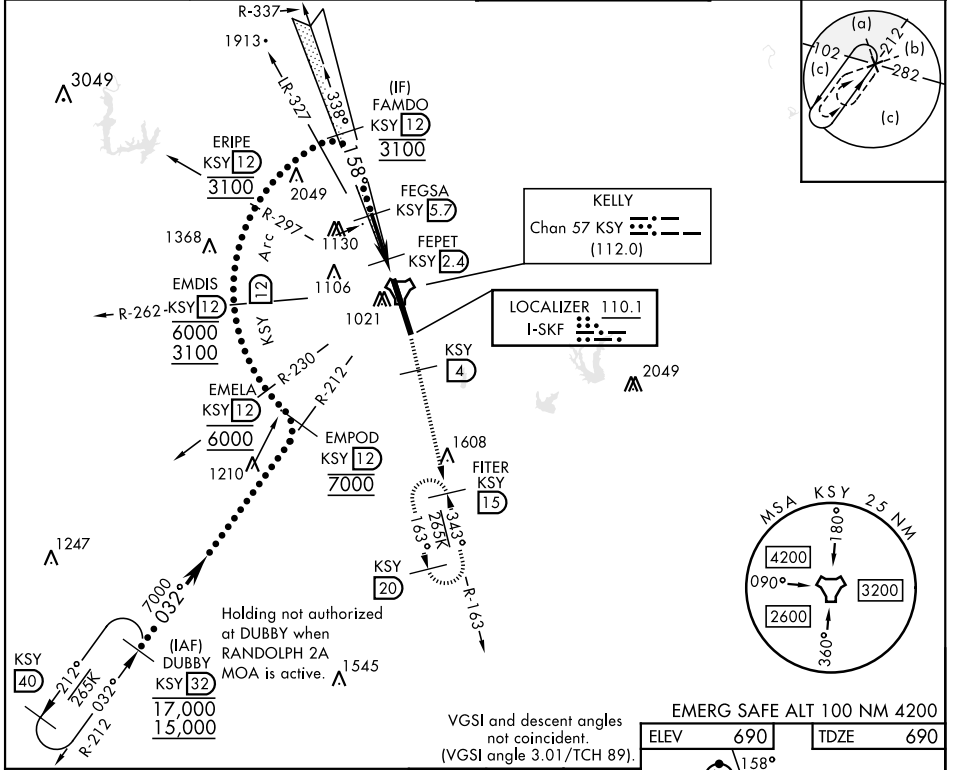
KELLY FLD (KSKF)

▼ \*When ALS inop, increase RVR to 40 and vis to ¼ mile.  
 \*\*When ALS inop, increase RVR to 60 and vis to 1½ miles.  
 \*\*\*Circling not authorized E of Rwy 16-34.



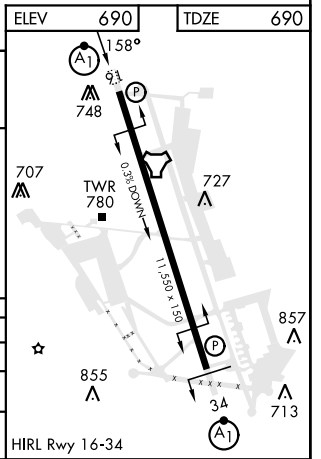
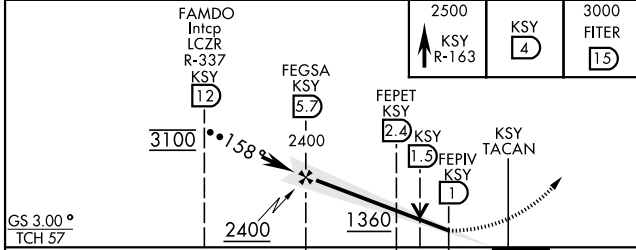
MISSED APPROACH: Climb to 2500 via KSY R-163 until 4 DME, then continue climb to 3000 to FITER/15 DME and hold.

ATIS <b>120.45 273.5</b>	SAN ANTONIO APP CON <b>118.05 353.5</b>	KELLY TOWER <b>124.3 322.35</b>	GND CON <b>121.8 289.4</b>
-----------------------------	--	------------------------------------	-------------------------------



VGSIs and descent angles not coincident.  
 (VGSIs angle 3.01/TCH 89).

EMERG SAFE ALT 100 NM 4200



CATEGORY	C	D	E
S-ILS 16 *	890/24	200	(200-½)
S-LOC/ DME 16 **	1080/35	390	(400-¾)
CIRCLING ***	1340-1¾ 650 (700-1¾)	1900-3	1210 (1300-3)

# HI-ILS or LOC/DME Z RWY 16

SC-3, 14 MAY 2026 to 11 JUN 2026

SC-3, 14 MAY 2026 to 11 JUN 2026