

HI-ILS or LOC/DME Z RWY 34

LOC I-OSQ 110.7	APCH CRS 338°	Rwy Idg 11,550 TDZE 660 Arprt Elev 690
---------------------------	-------------------------	--

[USAF]

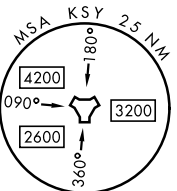
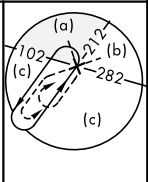
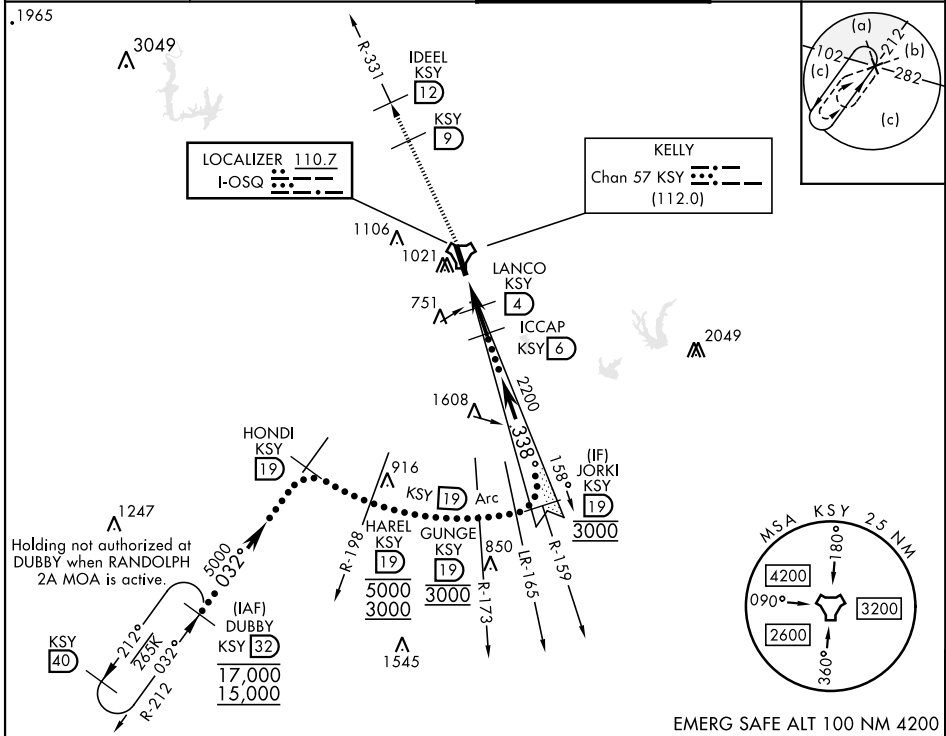
KELLY FLD (KSKF)

* When ALS inop, increase RVR to 40 and vis to ¼ mile.
 ** When ALS inop, increase RVR to 55 and vis to 1 mile.
 *** Circling not authorized E of Rwy 16-34.

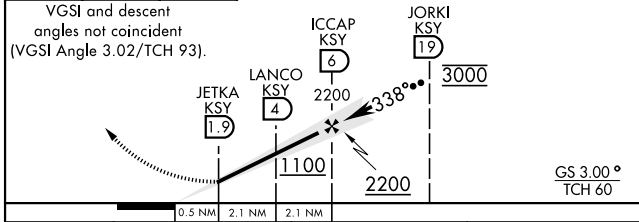


MISSED APPROACH: Climbing to 2500 via KSY TACAN R-331 until 9 DME, cross 9 DME at 2500, then continue climb to 3000 to IDEEL/12.0 DME. Expect ATC instructions.

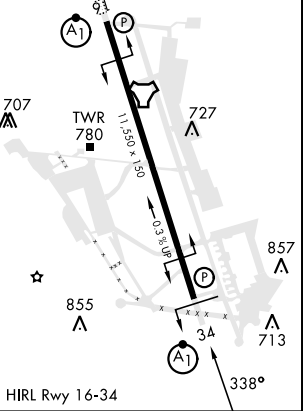
ATIS 120.45 273.5	SAN ANTONIO APP CON 118.05 353.5	TOWER 124.3 322.35	GND CON 121.8 289.4
-----------------------------	--	------------------------------	-------------------------------



2500 KSY R-331	KSY R-331 9	3000 IDEEL KSY 12
----------------------	-------------------	----------------------------



ELEV	690	TDZE	660
------	-----	------	-----



CATEGORY	C	D	E
S-ILS 34*	860/24	200	(200-½)
S-LOC 34**	1020/30	360	(400-¾)
CIRCLING***	1340-134 650 (700-134)	1900-3	1210 (1300-3)

HI-ILS or LOC/DME Z RWY 34

SC-3, 14 MAY 2026 to 11 JUN 2026

SC-3, 14 MAY 2026 to 11 JUN 2026