

HI-TACAN Z RWY 16

TACAN KSY Chan 57	APCH CRS 151°	Rwy ldg 11,550 TDZE 690 Arpt Elev 690
-----------------------------	-------------------------	--

[USAF]

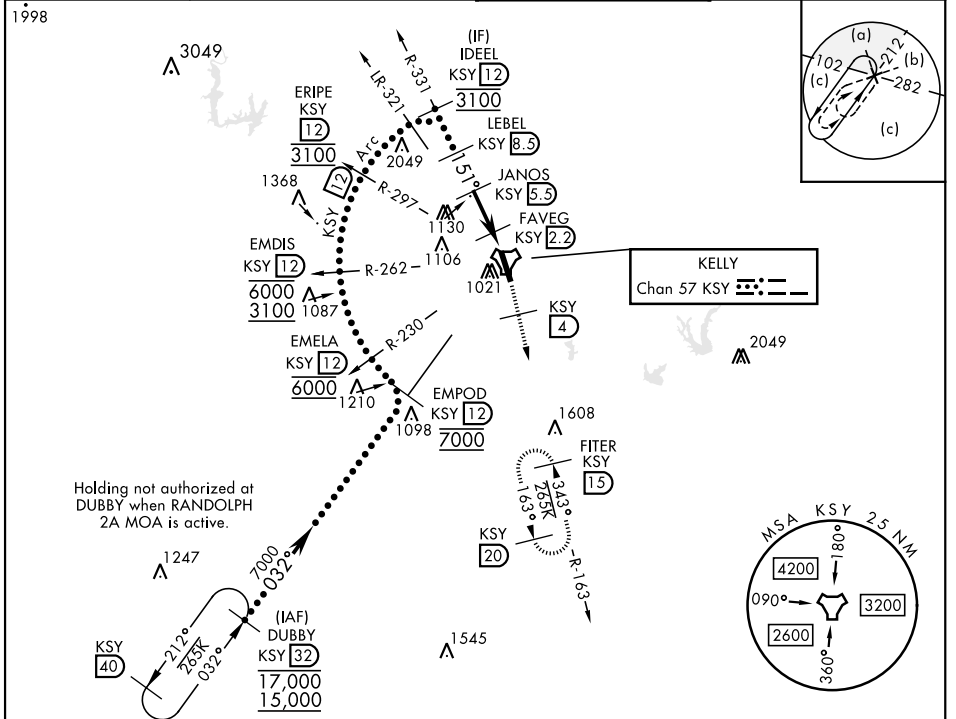
KELLY FLD (KSKF)

▼ * When ALS inop, increase RVR to 60 and vis to 1½ miles.
 ** Circling not authorized E of Rwy 16-34.



MISSED APPROACH: Climb to 2500 via KSY TACAN R-163 until 4 DME, then continue climb to 3000 to FITER/15 DME and hold.

ATIS 120.45 273.5	SAN ANTONIO APP CON 118.05 353.5	TOWER 124.3 322.35	GND CON 121.8 289.4
-----------------------------	--	------------------------------	-------------------------------



SC-3, 14 MAY 2026 to 11 JUN 2026

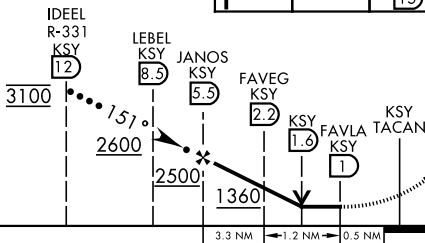
SC-3, 14 MAY 2026 to 11 JUN 2026

Holding not authorized at DUBBY when RANDOLPH 2A MOA is active.

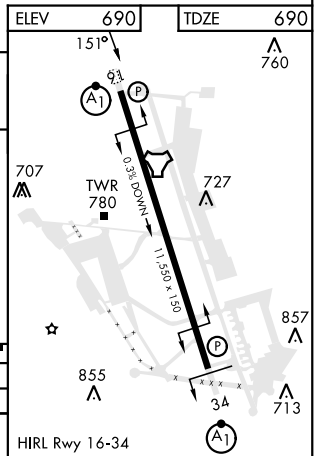
EMERG SAFE ALT 100 NM 4200

VGSI and descent angles not coincident (VGSI angle 3.01/TCH 89).

ELEV 690	TDZE 690
2500 KSY R-163	3000 FITER KSY 15



CATEGORY	C	D	E
S-16*	1100/40	410	(500-34)
CIRCLING**	1340-134 650 (700-134)	1900-3 1210 (1300-3)	



HI-TACAN Z RWY 16