

(YODUH2.YODUH) 25219

AL-371 (FAA)

KELLY FLD (SKF)  
SAN ANTONIO, TEXAS

# YODUH TWO DEPARTURE (RNAV)

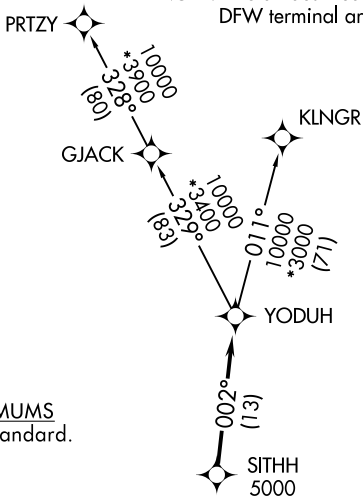
SAN ANTONIO DEP CON  
125.7 290.225  
ATIS  
120.45 273.5  
GND CON  
121.8 289.4  
KELLY TOWER  
124.3 322.35

RNAV 1 - DME/DME IRU or GPS.

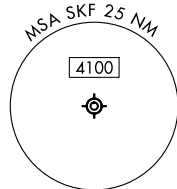
RADAR required for non-GPS equipped aircraft.  
RADAR required.

**TOP ALTITUDE:  
ASSIGNED BY ATC**

NOTE: Aircraft destined for airports north/northeast of DFW terminal area must file the KLNGR Transition.



TAKEOFF MINIMUMS  
Rwys 16, 34: Standard.



NOTE: Chart not to scale.



## DEPARTURE ROUTE DESCRIPTION

TAKEOFF RUNWAY 16: Climb on heading 158° or as assigned by ATC, for vectors to SITHH, thence. . .

TAKEOFF RUNWAY 34: Climb on heading 338° or as assigned by ATC, for vectors to SITHH, thence. . .

. . . on track 002° to YODUH, then on transition. Maintain ATC assigned altitude. Expect filed altitude 10 minutes after departure.

KLNGR TRANSITION (YODUH2.KLNGR)

PRTZY TRANSITION (YODUH2.PRTZY)

YODUH TWO DEPARTURE (RNAV)  
(YODUH2.YODUH) 07AUG25

SAN ANTONIO, TEXAS  
KELLY FLD (SKF)

SC-3, 14 MAY 2026 to 11 JUN 2026

SC-3, 14 MAY 2026 to 11 JUN 2026