

ALAMO FIVE DEPARTURE

RADAR required.

**TOP ALTITUDE:
ASSIGNED BY ATC**

SAN ANTONIO DEP CON
125.7 290.225
ATIS
128.8
CLNC DEL (When twr closed)
121.7
GND CON
121.7 379.9
STINSON TOWER ★
118.2 (CTAF) 379.9

BROWNWOOD
113.55 BWD
Chan 82(Y)

COWBOY
116.2 CVE
Chan 109

GOOCH SPRINGS
112.5 AGJ
Chan 72

CENTEX
112.8 CWK
Chan 75

STONEWALL
113.8 STV
Chan 85

NOTE: GOBBY Transition: Right turn at GOBBY NA for aircraft required FL240 and above.
NOTE: HENLY Transition: Right turn at HENLY NA for aircraft required FL240 and above.

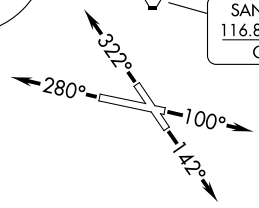
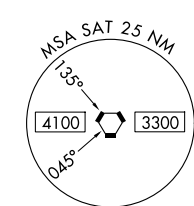
TAKEOFF MINIMUMS

Rwy 10: Standard with minimum climb of 230'/NM to 1900.

Rwy 14: Standard with minimum climb of 220'/NM to 1900.

Rwy 28: 300-1½ or standard with minimum climb of 230'/NM to 900, or alternatively, with standard takeoff minimums and a normal 200'/NM climb gradient, takeoff must occur no later than 1800' prior to DER.

Rwy 32: Standard with minimum climb of 230'/NM to 1700.



NOTE: Chart not to scale.

(CONTINUED ON FOLLOWING PAGE)

ALAMO FIVE DEPARTURE

SC-3, 14 MAY 2026 to 11 JUN 2026

SC-3, 14 MAY 2026 to 11 JUN 2026

ALAMO FIVE DEPARTURE



DEPARTURE ROUTE DESCRIPTION

TAKEOFF RUNWAY 10: Climb on heading 100° or as assigned by ATC for RADAR vectors to SAT VORTAC, thence. . .

TAKEOFF RUNWAY 14: Climb on heading 142° or as assigned by ATC for RADAR vectors to SAT VORTAC, thence. . .

TAKEOFF RUNWAY 28: Climb on heading 280° or as assigned by ATC for RADAR vectors to SAT VORTAC, thence. . .

TAKEOFF RUNWAY 32: Climb on heading 322° or as assigned by ATC for RADAR vectors to SAT VORTAC, thence. . .

. . .on transition/route. Maintain ATC assigned altitude. Expect filed altitude 10 minutes after departure.

GOBBY TRANSITION (ALAMO5.GOBBY): From over SAT VORTAC on SAT R-002 to GOBBY.

GOOCH SPRINGS TRANSITION (ALAMO5.AGJ): From over SAT VORTAC on SAT R-002 to GOBBY, then on SAT R-002 and AGJ R-185 to AGJ VORTAC.

HENLY TRANSITION (ALAMO5.HENLY): From over SAT VORTAC on SAT R-359 to HENLY.

JUMBO TRANSITION (ALAMO5.JUMBO): From over SAT VORTAC on SAT R-359 to JUMBO.

SC-3, 14 MAY 2026 to 11 JUN 2026

SC-3, 14 MAY 2026 to 11 JUN 2026