

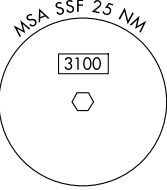
BOWIE EIGHT DEPARTURE

RADAR required.
DME required.

SAN ANTONIO DEP CON
125.7 290.225
ATIS
128.8
CLNC DEL (When twr closed)
121.7
GND CON
121.7 379.9
STINSON TOWER *
118.2 (CTAF) 379.9

SAN ANTONIO
116.8 SAT
Chan 115

STINSON
108.4 SSF

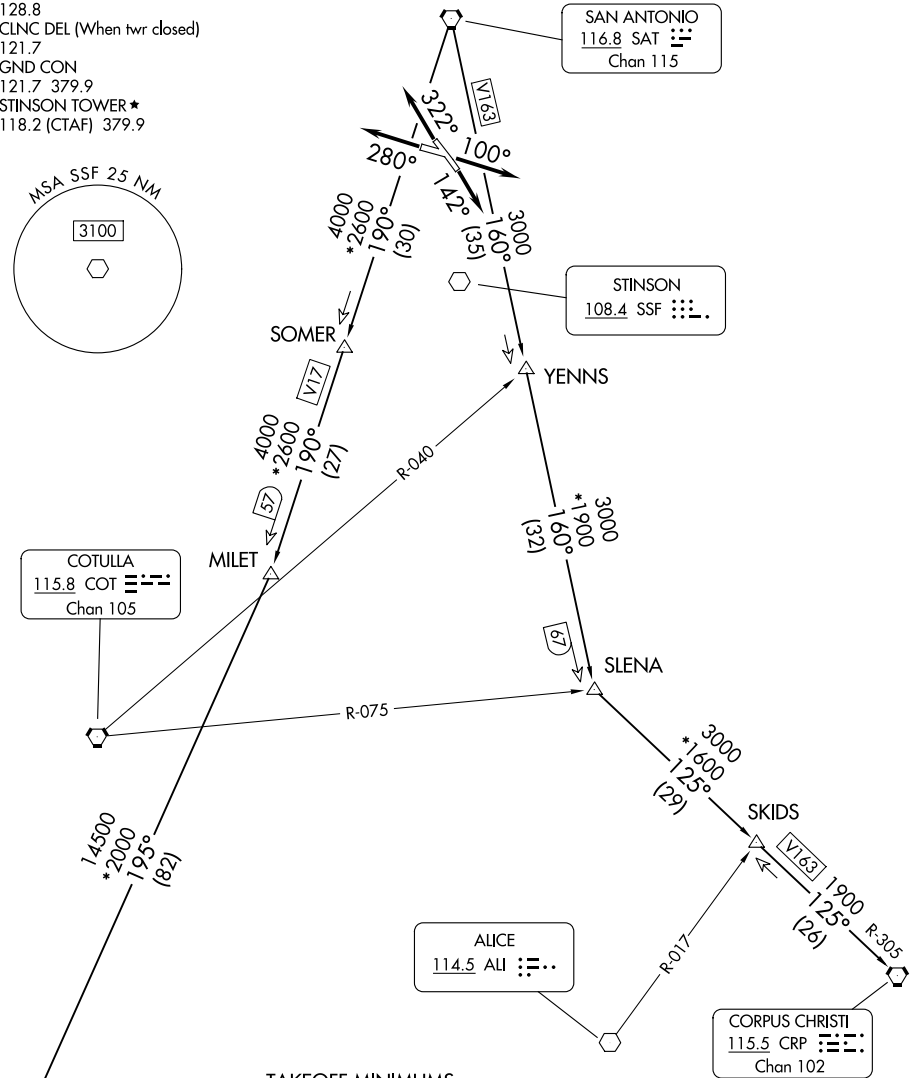


COTULLA
115.8 COT
Chan 105

ALICE
114.5 ALI

CORPUS CHRISTI
115.5 CRP
Chan 102

LAREDO
117.4 LRD
Chan 121



TAKEOFF MINIMUMS

- Rwy 10: Standard with minimum climb of 230'/NM to 1900.
- Rwy 14: Standard with minimum climb of 220'/NM to 1900.
- Rwy 28: 300-1 $\frac{5}{8}$ or standard with minimum climb of 230'/NM to 900, or alternatively, with standard takeoff minimums and a normal 200'/NM climb gradient, takeoff must occur no later than 1800' prior to DER.
- Rwy 32: Standard with minimum climb of 230'/NM to 1700.

NOTE: Chart not to scale.

(CONTINUED ON FOLLOWING PAGE)

BOWIE EIGHT DEPARTURE

SC-3, 14 MAY 2026 to 11 JUN 2026

SC-3, 14 MAY 2026 to 11 JUN 2026

BOWIE EIGHT DEPARTURE



DEPARTURE ROUTE DESCRIPTION

TAKEOFF RUNWAY 10: Climb on heading 100° or as assigned by ATC for vectors to SAT VORTAC, thence. . . .

TAKEOFF RUNWAY 14: Climb on heading 142° or as assigned by ATC for vectors to SAT VORTAC, thence. . . .

TAKEOFF RUNWAY 28: Climb on heading 280° or as assigned by ATC for vectors to SAT VORTAC, thence. . . .

TAKEOFF RUNWAY 32: Climb on heading 322° or as assigned by ATC for vectors to SAT VORTAC, thence. . . .

. . . .on transition/route. Maintain ATC assigned altitude. Expect filed altitude 10 minutes after departure.

CORPUS CHRISTI TRANSITION (BOWIE8.CRP): From over SAT VORTAC on SAT R-160 to SLENA, then on CRP R-305 to CRP VORTAC.

LAREDO TRANSITION (BOWIE8.LRD): From over SAT VORTAC on SAT R-190 to MILET, then on LRD R-015 to LRD VORTAC.

SC-3, 14 MAY 2026 to 11 JUN 2026

SC-3, 14 MAY 2026 to 11 JUN 2026