

(SLENA2.SLENA) 25219

AL-372 (FAA)

STINSON MUNI (SSF)  
SAN ANTONIO, TEXAS

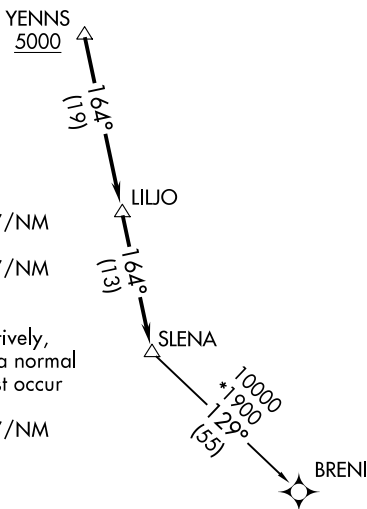
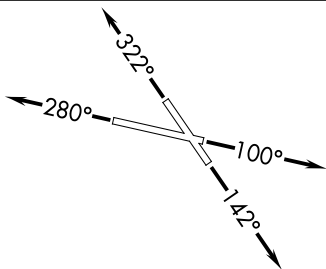
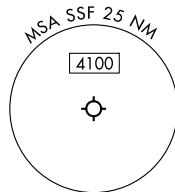
# SLENA TWO DEPARTURE (RNAV)

SAN ANTONIO DEP CON  
125.7 290.225  
ATIS  
128.8  
CLNC DEL (When twr closed)  
121.7  
GND CON  
121.7 379.9  
STINSON TOWER ★  
118.2 379.9

RNAV 1 - DME/DME/IRU or GPS.

RADAR required for non-GPS equipped aircraft.  
RADAR required.

**TOP ALTITUDE:  
ASSIGNED BY ATC**



### TAKEOFF MINIMUMS

- Rwy 10: Standard with minimum climb of 230'/NM to 1900.
- Rwy 14: Standard with minimum climb of 220'/NM to 1900.
- Rwy 28: 300-1 $\frac{5}{8}$  or standard with minimum climb of 230'/NM to 900, or alternatively, with standard takeoff minimums and a normal 200'/NM climb gradient, takeoff must occur no later than 1800' prior to DER.
- Rwy 32: Standard with minimum climb of 230'/NM to 1700.

NOTE: Chart not to scale.



### DEPARTURE ROUTE DESCRIPTION

- TAKEOFF RUNWAY 10: Climb on heading 100° or as assigned by ATC, for vectors to YENNS. Thence. . .
- TAKEOFF RUNWAY 14: Climb on heading 142° or as assigned by ATC, for vectors to YENNS. Thence. . .
- TAKEOFF RUNWAY 28: Climb on heading 280° or as assigned by ATC, for vectors to YENNS. Thence. . .
- TAKEOFF RUNWAY 32: Climb on heading 322° or as assigned by ATC, for vectors to YENNS. Thence. . .

. . . on track 164° to LILJO, then on track 164° to SLENA, then on transition. Maintain ATC assigned altitude. Expect filed altitude 10 minutes after departure.

BRENI TRANSITION (SLENA2.BRENI)

# SLENA TWO DEPARTURE (RNAV)

(SLENA2.SLENA) 07AUG25

SAN ANTONIO, TEXAS  
STINSON MUNI (SSF)

SC-3, 14 MAY 2026 to 11 JUN 2026

SC-3, 14 MAY 2026 to 11 JUN 2026