

# SNIDR TWO DEPARTURE (RNAV)

SC-3, 14 MAY 2026 to 11 JUN 2026

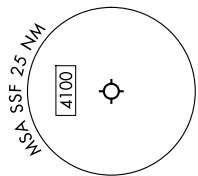
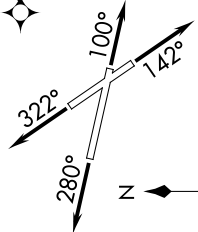
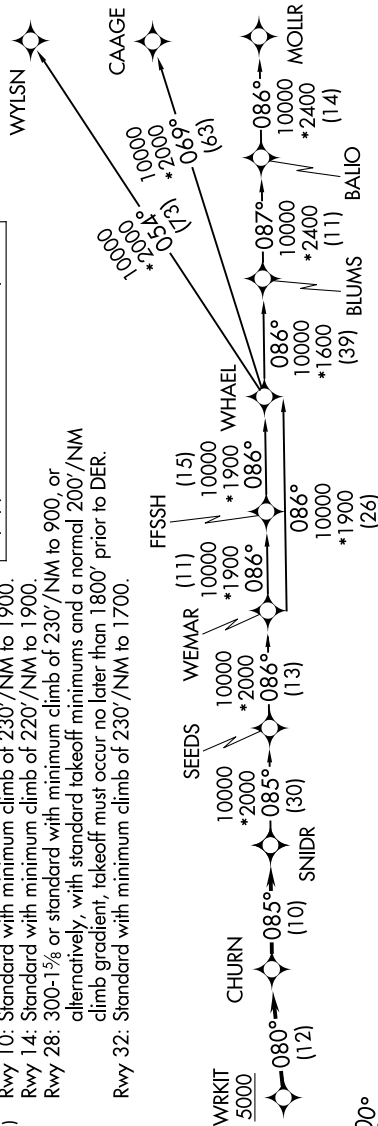
SAN ANTONIO DEP CON  
125.7 290.225  
ATIS  
128.8  
CLNC DEL (When twr closed)  
121.7  
GND CON  
121.7 379.9  
STINSON TOWER \*  
118.2 379.9

### TAKEOFF MINIMUMS

- Rwy 10: Standard with minimum climb of 230'/NM to 1900.
- Rwy 14: Standard with minimum climb of 220'/NM to 1900.
- Rwy 28: 300-1% or standard with minimum climb of 230'/NM to 900, or alternatively, with standard takeoff minimums and a normal 200'/NM climb gradient, takeoff must occur no later than 1800' prior to DER.
- Rwy 32: Standard with minimum climb of 230'/NM to 1700.

RNAV 1 - DME/DME/IRU or GPS.  
RADAR required for non-GPS equipped aircraft. RADAR required.

### TOP ALTITUDE: ASSIGNED BY ATC



NOTE: Chart not to scale.

### DEPARTURE ROUTE DESCRIPTION

- TAKEOFF RUNWAY 10: Climb on heading 100° or as assigned by ATC, for vectors to WRKIT, thence. . .
- TAKEOFF RUNWAY 14: Climb on heading 142° or as assigned by ATC, for vectors to WRKIT, thence. . .
- TAKEOFF RUNWAY 28: Climb on heading 280° or as assigned by ATC, for vectors to WRKIT, thence. . .
- TAKEOFF RUNWAY 32: Climb on heading 322° or as assigned by ATC, for vectors to WRKIT, thence. . .
- . . . on track 080° to CHURN, then on track 085° to SNIDR. Expect filed altitude 10 minutes after departure.

- BLUMS TRANSITION (SNIDR2.BLUMS)
- CAAGE TRANSITION (SNIDR2.CAAGE)
- FFSSH TRANSITION (SNIDR2.FFSSH)
- MOLLR TRANSITION (SNIDR2.MOLLR)
- SEEDS TRANSITION (SNIDR2.SEEDS)
- WEMAR TRANSITION (SNIDR2.WEMAR)
- WHAEL TRANSITION (SNIDR2.WHAEL)
- WYLSN TRANSITION (SNIDR2.WYLSN)

# SNIDR TWO DEPARTURE (RNAV)

SC-3, 14 MAY 2026 to 11 JUN 2026