

TJANO TWO DEPARTURE (RNAV)

SAN ANTONIO DEP CON
125.7 290.225
ATIS
128.8
CLNC DEL (When twr closed)
121.7
GND CON
121.7 379.9
STINSON TOWER ★
118.2 379.9

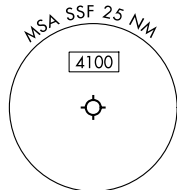
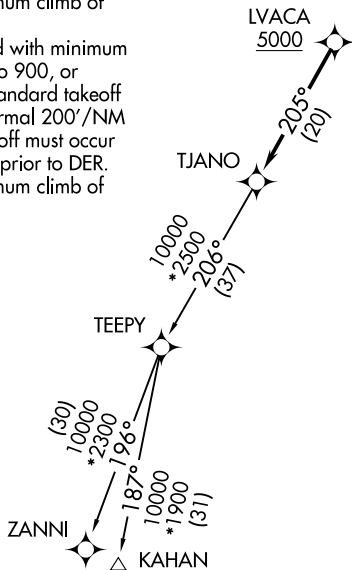
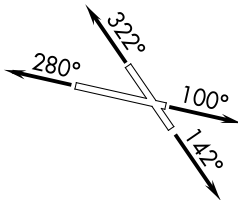
RNAV 1 - DME/DME IRU or GPS.

RADAR required for non-GPS equipped aircraft.
RADAR required.

**TOP ALTITUDE:
ASSIGNED BY ATC**

TAKEOFF MINIMUMS

- Rwy 10: Standard with minimum climb of 230'/NM to 1900.
- Rwy 14: Standard with minimum climb of 220'/NM to 1900.
- Rwy 28: 300-1 $\frac{1}{8}$ or standard with minimum climb of 230'/NM to 900, or alternatively, with standard takeoff minimums and a normal 200'/NM climb gradient, takeoff must occur no later than 1800' prior to DER.
- Rwy 32: Standard with minimum climb of 230'/NM to 1700.



NOTE: Chart not to scale.

DEPARTURE ROUTE DESCRIPTION

TAKEOFF RUNWAY 10: Climb on heading 100° or as assigned by ATC, for vectors to LVACA, thence. . .

TAKEOFF RUNWAY 14: Climb on heading 142° or as assigned by ATC, for vectors to LVACA, thence. . .

TAKEOFF RUNWAY 28: Climb on heading 280° or as assigned by ATC, for vectors to LVACA, thence. . .

TAKEOFF RUNWAY 32: Climb on heading 322° or as assigned by ATC, for vectors to LVACA, thence. . .

. . . on track 205° to TJANO, then on transition. Maintain ATC assigned altitude. Expect filed altitude 10 minutes after departure.

KAHAN TRANSITION (TJANO2.KAHAN)

ZANNI TRANSITION (TJANO2.ZANNI)

TJANO TWO DEPARTURE (RNAV)

SC-3, 14 MAY 2026 to 11 JUN 2026

SC-3, 14 MAY 2026 to 11 JUN 2026