

VOR SSF 108.4	APP CRS 343°	Rwy Ldg 3530 TDZE 571 Apt Elev 578
-------------------------	------------------------	---

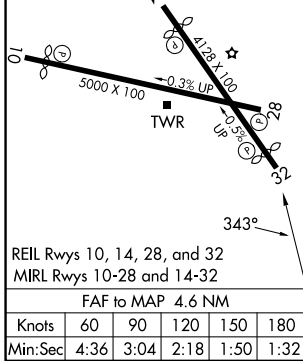
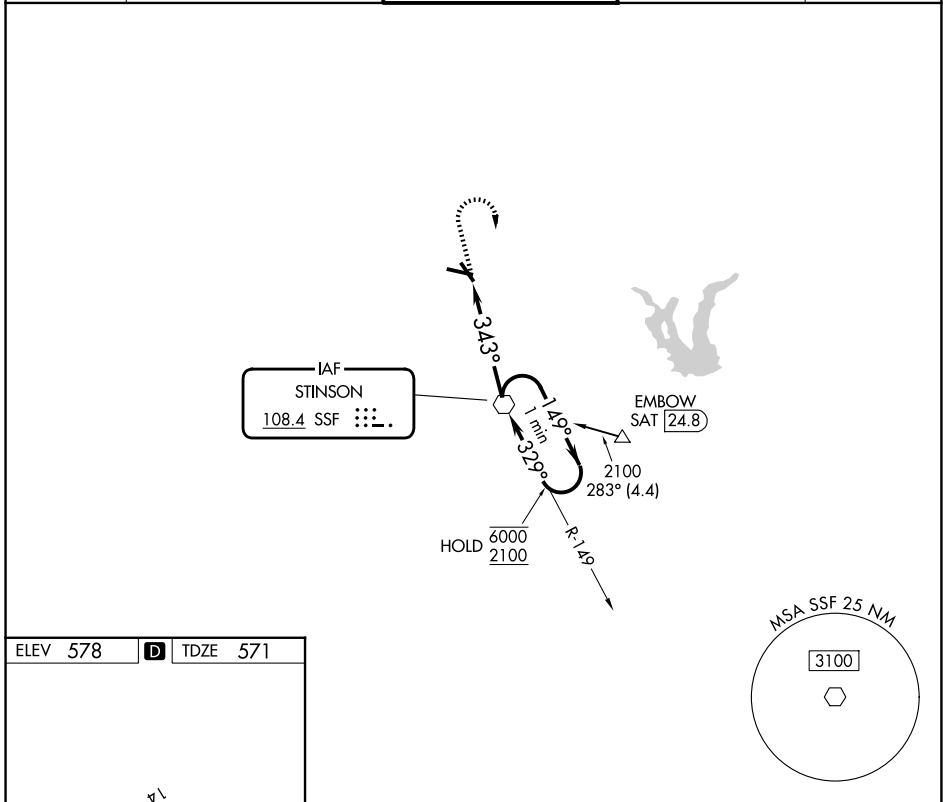
VOR RWY 32

STINSON MUNI (SSF)

NA Rwy 32 helicopter visibility reduction below 3/4 SM NA.
Straight-in Rwy 32 NA at night, Circling Rwy 10, NA at night.

MISSED APPROACH: Climb to 1400 then climbing right turn to 2500 direct SSF VOR and hold.

ATIS 128.8	SAN ANTONIO APP CON 125.7 290.225	STINSON TOWER ★ 118.2 (CTAF) 379.9	GND CON 121.7 379.9	UNICOM 122.95
----------------------	---	--	-------------------------------	-------------------------



1400	2500	SSF	One Minute Holding Pattern	
		SSF VOR	6000	2100
CATEGORY	A	B	C	D
S-32	1020-1 449 (500-1)		1020-1 3/8 449 (500-1 3/8)	NA
CIRCLING	1040-1 462 (500-1)	1120-1 542 (600-1)	1260-2 682 (700-2)	NA

SC-3, 14 MAY 2026 to 11 JUN 2026

SC-3, 14 MAY 2026 to 11 JUN 2026