

(YODUH2.YODUH) 25219

AL-372 (FAA)

STINSON MUNI (SSF)
SAN ANTONIO, TEXAS

YODUH TWO DEPARTURE (RNAV)

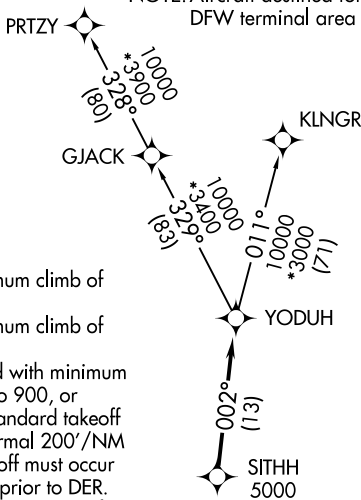
SAN ANTONIO DEP CON
125.7 290.225
ATIS
128.8
CLNC DEL (When twr closed)
121.7
GND CON
121.7 379.9
STINSON TOWER *
118.2 379.9

RNAV 1 - DME/DME IRU or GPS.

RADAR required for non-GPS equipped aircraft.
RADAR required.

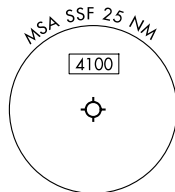
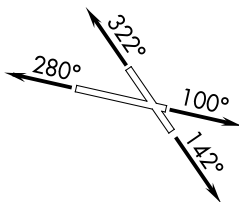
**TOP ALTITUDE:
ASSIGNED BY ATC**

NOTE: Aircraft destined for airports north/northeast of DFW terminal area must file the KLNGR Transition.



TAKEOFF MINIMUMS

- Rwy 10: Standard with minimum climb of 230'/NM to 1900.
- Rwy 14: Standard with minimum climb of 220'/NM to 1900.
- Rwy 28: 300-1 $\frac{5}{8}$ or standard with minimum climb of 230'/NM to 900, or alternatively, with standard takeoff minimums and a normal 200'/NM climb gradient, takeoff must occur no later than 1800' prior to DER.
- Rwy 32: Standard with minimum climb of 230'/NM to 1700.



NOTE: Chart not to scale.

DEPARTURE ROUTE DESCRIPTION

- TAKEOFF RUNWAY 10:** Climb on heading 100° or as assigned by ATC, for vectors to SITHH, thence. . .
- TAKEOFF RUNWAY 14:** Climb on heading 142° or as assigned by ATC, for vectors to SITHH, thence. . .
- TAKEOFF RUNWAY 28:** Climb on heading 280° or as assigned by ATC, for vectors to SITHH, thence. . .
- TAKEOFF RUNWAY 32:** Climb on heading 322° or as assigned by ATC, for vectors to SITHH, thence. . .

. . .on track 002° to YODUH, then on transition. Maintain ATC assigned altitude. Expect filed altitude 10 minutes after departure.

KLNGR TRANSITION (YODUH2.KLNGR)
PRTZY TRANSITION (YODUH2.PRTZY)

YODUH TWO DEPARTURE (RNAV)
(YODUH2.YODUH) 07AUG25

SAN ANTONIO, TEXAS
STINSON MUNI (SSF)

SC-3, 14 MAY 2026 to 11 JUN 2026

SC-3, 14 MAY 2026 to 11 JUN 2026