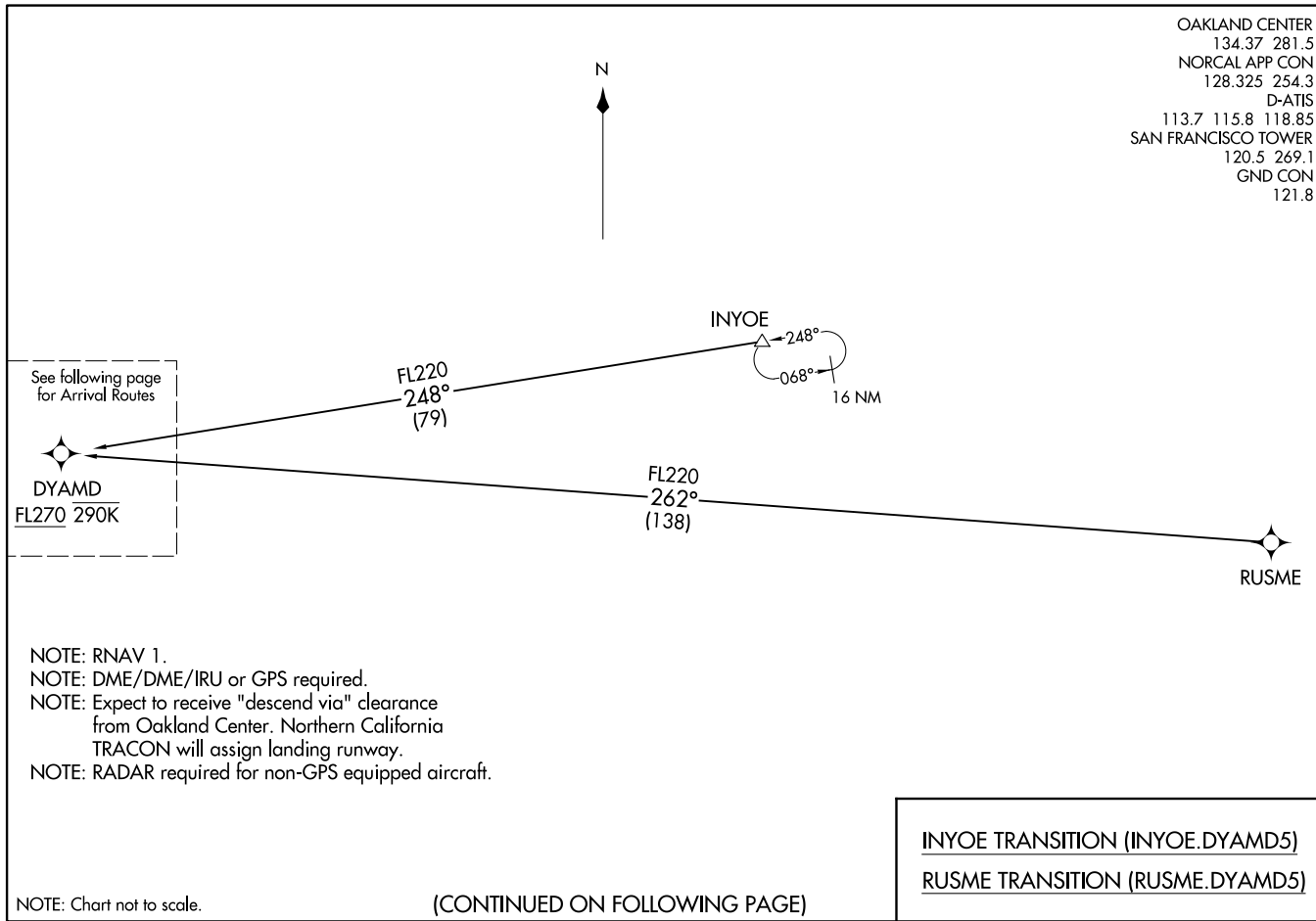


DYAMD FIVE ARRIVAL (RNAV) Transition Routes
(DYAMD.DYAMD5) 03JAN19

SAN FRANCISCO, CALIFORNIA
SAN FRANCISCO INTL (SFO)



OAKLAND CENTER
134.37 281.5
NORCAL APP CON
128.325 254.3
D-ATIS
113.7 115.8 118.85
SAN FRANCISCO TOWER
120.5 269.1
GND CON
121.8

(DYAMD.DYAMD5) 19003
DYAMD FIVE ARRIVAL (RNAV) Transition Routes
AL-375 (FAI)

SAN FRANCISCO INTL (SFO)
SAN FRANCISCO, CALIFORNIA

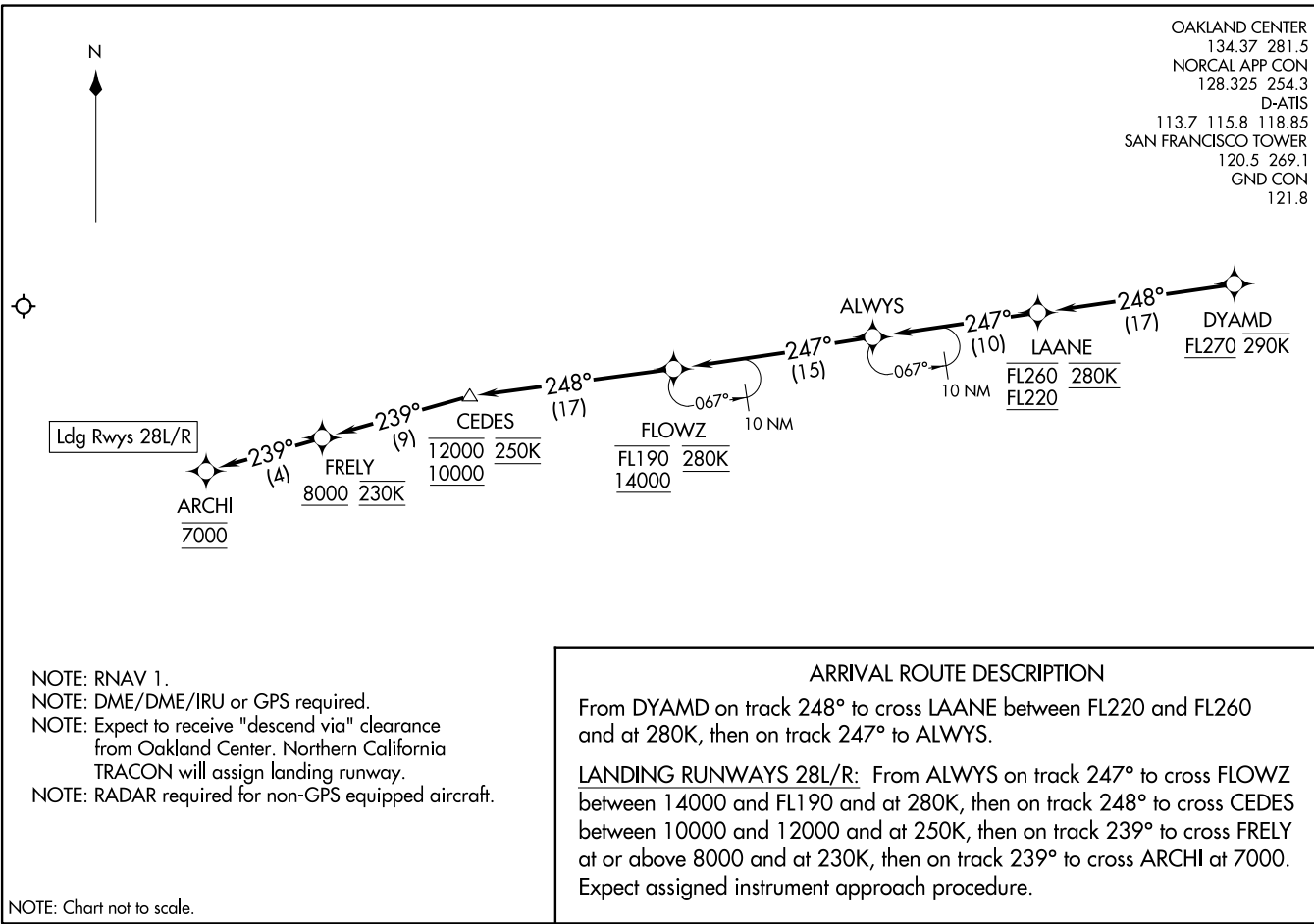
INYOE TRANSITION (INYOE.DYAMD5)
RUSME TRANSITION (RUSME.DYAMD5)

(CONTINUED ON FOLLOWING PAGE)

NOTE: Chart not to scale.

DYAMD FIVE ARRIVAL (RNAV) Arrival Routes
 (DYAMD: DYAMD5) 03JAN19

SAN FRANCISCO, CALIFORNIA
 SAN FRANCISCO INTL (SFO)



OAKLAND CENTER
 134.37 281.5
 NORCAL APP CON
 128.325 254.3
 D-ATIS
 113.7 115.8 118.85
 SAN FRANCISCO TOWER
 120.5 269.1
 GND CON
 121.8

(DYAMD: DYAMD5) 19003
 DYAMD FIVE ARRIVAL (RNAV) Arrival Routes
 AL-375 (FAA)

SAN FRANCISCO INTL (SFO)
 SAN FRANCISCO, CALIFORNIA

ARRIVAL ROUTE DESCRIPTION
 From DYAMD on track 248° to cross LAANE between FL220 and FL260 and at 280K, then on track 247° to ALWAYS.
LANDING RUNWAYS 28L/R: From ALWAYS on track 247° to cross FLOWZ between 14000 and FL190 and at 280K, then on track 248° to cross CEDES between 10000 and 12000 and at 250K, then on track 239° to cross FRELY at or above 8000 and at 230K, then on track 239° to cross ARCHI at 7000. Expect assigned instrument approach procedure.

NOTE: Chart not to scale.