

GAP SEVEN DEPARTURE

AL-375 (FAA)

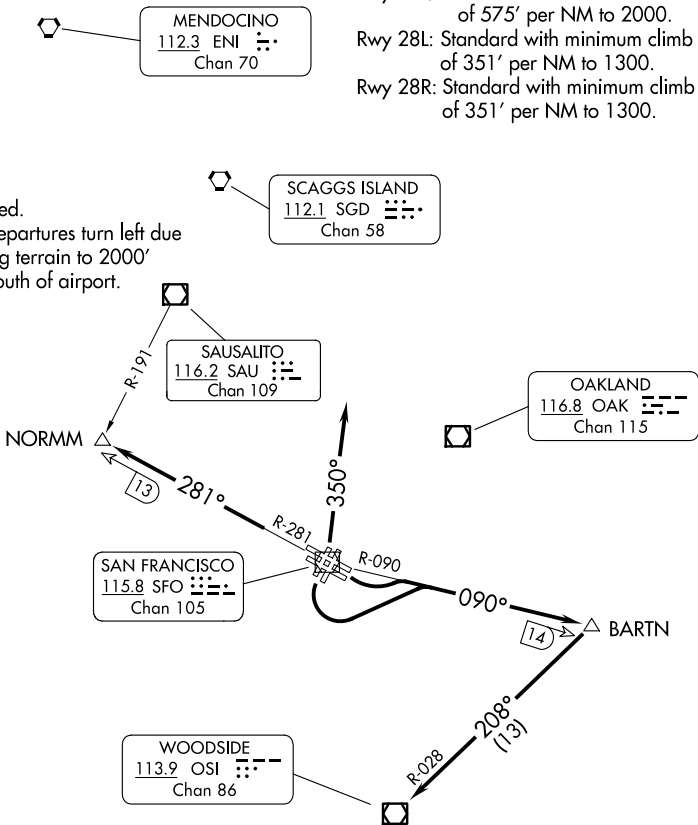
SAN FRANCISCO INTL (SFO)
SAN FRANCISCO, CALIFORNIA

D-ATIS
113.7 115.8 118.85
CPDLC
GND CON
121.8
SAN FRANCISCO TOWER
120.5 269.1
NORCAL DEP CON
120.9 323.2 (NW-E)
135.1 307.2 (SE-W)

TAKEOFF MINIMUMS

Rwy 19L/R: Standard with minimum climb of 575' per NM to 2000.
Rwy 28L: Standard with minimum climb of 351' per NM to 1300.
Rwy 28R: Standard with minimum climb of 351' per NM to 1300.

NOTE: RADAR required.
NOTE: Rwy 19L/R departures turn left due to steeply rising terrain to 2000' immediately south of airport.



NOTE: Chart not to scale.

DEPARTURE ROUTE DESCRIPTION

TAKEOFF RUNWAYS 1L/R: Climb on SFO R-350 (or as assigned) for vectors to assigned route/fix. Thence

TAKEOFF RUNWAYS 10L/R and 19L/R: Turn left and climb on the SFO R-090 and OSI R-028 to OSI VOR/DME; expect vector to assigned route/fix after OSI VOR/DME. Thence

TAKEOFF RUNWAYS 28L/R: Climb on the SFO VOR/DME R-281 to NORMMM INT/ SFO VOR/DME 13 DME; expect vector to assigned route/fix after NORMMM INT. Thence

. . . .expect further clearance to filed altitude 10 minutes after departure.

SW-2, 14 MAY 2026 to 11 JUN 2026

SW-2, 14 MAY 2026 to 11 JUN 2026

GAP SEVEN DEPARTURE