

GBAS CH 21037 G28B	APP CRS 284°	Rwy Ldg 10275 TDZE 13 Apt Elev 13
---------------------------------	------------------------	--

GLS RWY 28L


SAN FRANCISCO INTL (SFO)

RNP APCH-GPS.

Simultaneous approach authorized. Simultaneous operations require use of vertical guidance; maintain last assigned altitude until established on glidepath. Use of FD or AP required during simultaneous operations. Autopilot coupled approach NA below 213.

*RVR 1800 authorized with use of FD or AP or HUD to DA.

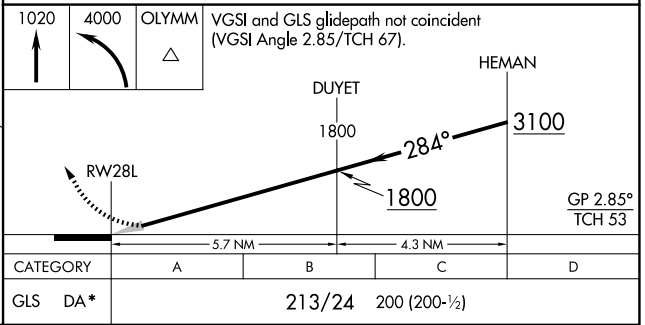
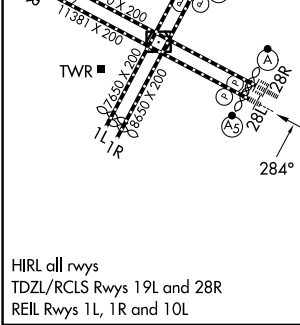
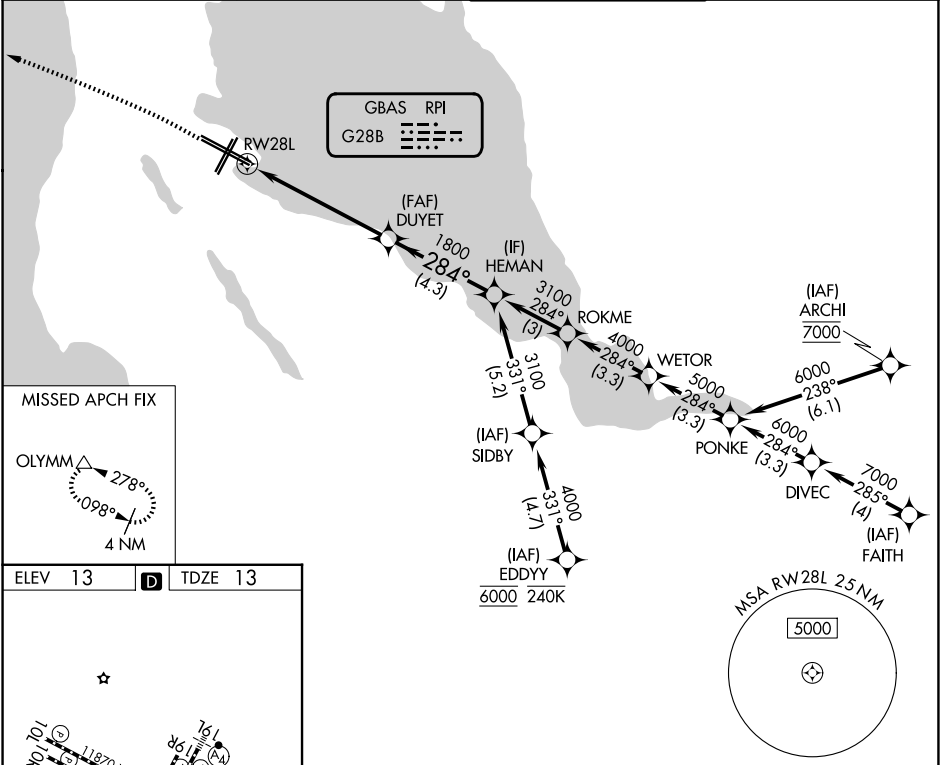
MALSR



MISSED APPROACH: Climb to 1020 then climbing left turn to 4000 direct OLYMM and hold.

*Missed approach requires minimum climb of 330 feet per NM to 1600; if unable to meet climb gradient, see RNAV (GPS) Rwy 28L.

D-ATIS 113.7 115.8 118.85	NORCAL APP CON 134.5 338.2	SAN FRANCISCO TOWER 120.5 269.1	GND CON 121.8
-------------------------------------	--------------------------------------	---	-------------------------



SW-2, 14 MAY 2026 to 11 JUN 2026

SW-2, 14 MAY 2026 to 11 JUN 2026