

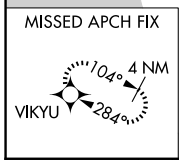
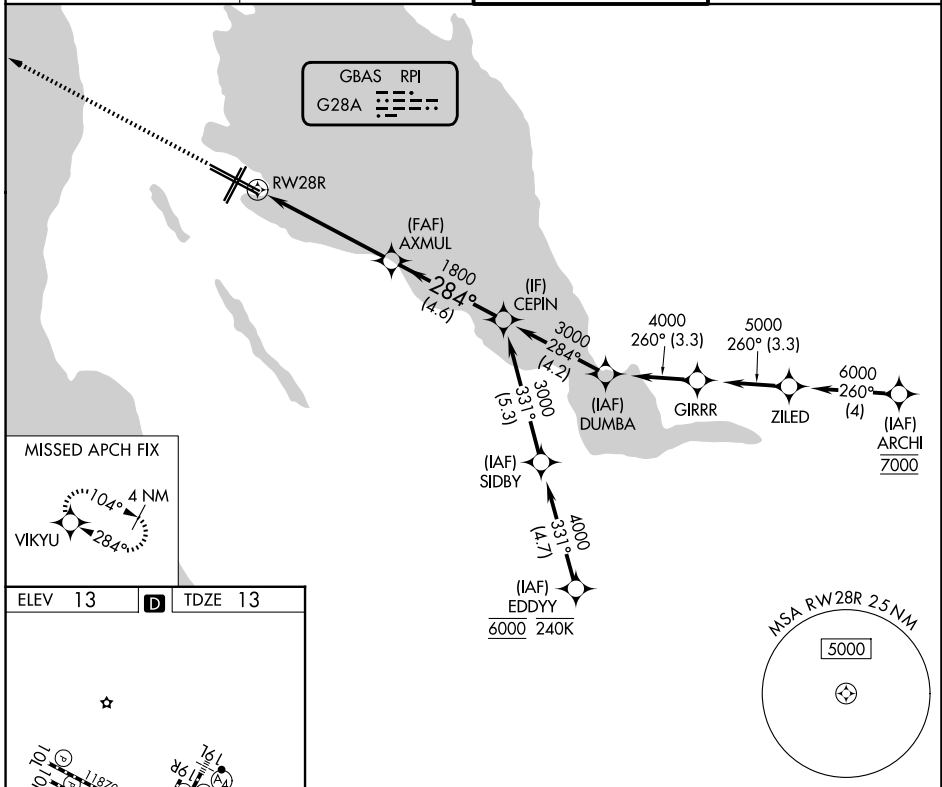
GBAS CH 20626 G28A	APP CRS 284°	Rwy Ldg 11236 TDZE 13 Apt Elev 13
---------------------------------	------------------------	--

GLS RWY 28R

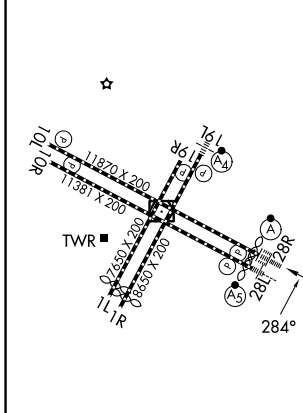
SAN FRANCISCO INTL (SFO)

RNP APCH-GPS.	ALSF-2	MISSED APPROACH: Climb to 3200 direct VIKYU and hold. *Missed approach requires minimum climb of 350 feet per NM to 1900; if unable to meet climb gradient, see RNAV (GPS) Z RWY 28R.
<p>Simultaneous approach authorized. Simultaneous operations require use of vertical guidance; maintain last assigned altitude until established on glidepath. Use of FD or AP required during simultaneous operations. Autopilot coupled approach NA below 213 feet.</p>		

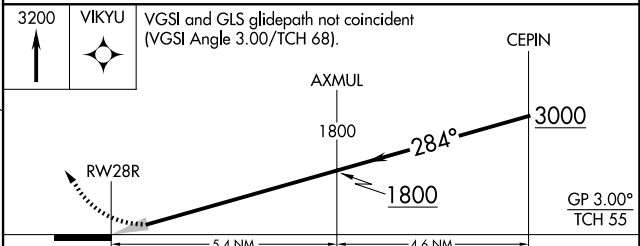
D-ATIS 113.7 115.8 118.85	NORCAL APP CON 134.5 338.2	SAN FRANCISCO TOWER 120.5 269.1	GND CON 121.8
-------------------------------------	--------------------------------------	---	-------------------------



ELEV 13	D	TDZE 13
---------	----------	---------



HIRL all rwys
TDZL/RCLS Rwy 19L and 28R
REIL Rwy 1L, 1R and 10L



CATEGORY	A	B	C	D
GLS DA*	213/18		200 (200-1/2)	

SW-2, 14 MAY 2026 to 11 JUN 2026

SW-2, 14 MAY 2026 to 11 JUN 2026