

LOC/DME I-SIA 108.9 Chan 26	APP CRS 194°	Rwy Ldg 19L 19R	19L 8650	19R 7650
		TDZE 11	11	11
		Apt Elev 13	13	13

ILS or LOC RWY 19L

SAN FRANCISCO INTL (SFO)

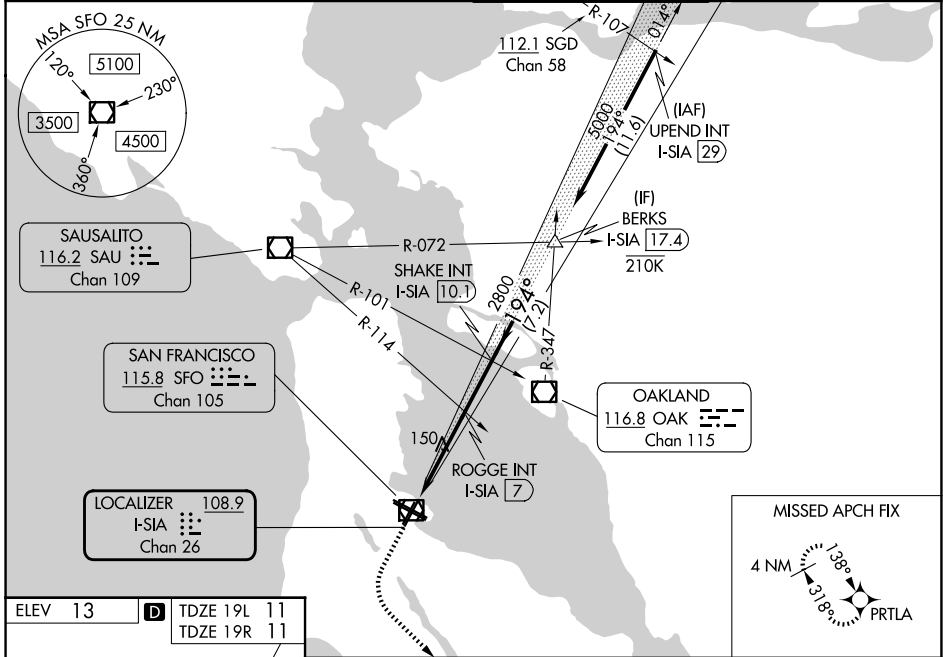
RNP APCH - GPS.

⚠ Inop table does not apply to ROGGE fix minimums S-LOC Rwy 19L or Sidestep Rwy 19R. Simultaneous approach authorized. Simultaneous operations require use of vertical guidance; maintain last assigned altitude until established on the glideslope. For inop ALS, increase S-ILS Rwy 19L* all Cats visibility to RVR 4500, S-ILS Rwy 19L all Cats visibility to 2½ SM. Sidestep NA until passing ROGGE INT.

MALSF Rwy 19L

MISSED APPROACH: Climb to 1100 then climbing left turn to 4000 direct to PRTLA and hold.
*Missed approach requires minimum climb of 357 feet per NM to 2000.

D-ATIS 113.7 115.8 118.85	NORCAL APP CON 134.5 338.2	SAN FRANCISCO TOWER 120.5 269.1	GND CON 121.8
-------------------------------------	--------------------------------------	---	-------------------------



ELEV 13	D	TDZE 19L 11	TDZE 19R 11
---------	----------	-------------	-------------

194°

HIRL all rwys
TDZL/RCLS Rwy 19L and 28R
REIL Rwy 1L, 1R and 10L

FAF to MAP 8.6 NM

Knots	60	90	120	150	180
Min:Sec	8:36	5:44	4:18	3:26	2:52

1100	4000	PRTLA	VGSI and ILS glidepath not coincident (VGSI Angle 3.00/TCH 71).	BERKS I-SIA 17.4
			SHAKE INT I-SIA 10.1	
			ROGGE INT I-SIA 7	
			2800	
			1800	
			2800	
			5000	
			GS 3.00° TCH 55	
			2.5 NM	
			3 NM	
			3.1 NM	
			7.2 NM	
CATEGORY	A	B	C	D
S-ILS 19L*	300/40		289 (300-¾)	
S-ILS 19L	774-2		763 (800-2)	
S-LOC 19L	1800-1¼	1800-1½	1800-3 1789 (1800-3)	
	1789 (1800-¼)	1789 (1800-½)		
ROGGE FIX MINIMUMS (DUAL VOR RECEIVERS REQUIRED)				
S-LOC 19L	880/40	880/55	880-2½ 869 (900-2½)	
	869 (900-¾)	869 (900-1)		
SIDESTEP 19R	880-2 869 (900-2)		880-3 869 (900-3)	