

LOC/DME I-GWQ <b>111.7</b> Chan <b>54</b>	APP CRS <b>284°</b>	Rwy Ldg <b>11236</b>	28R <b>10275</b>	28L <b>13</b>
		TDZE <b>13</b>		<b>13</b>
		Apt Elev <b>13</b>		<b>13</b>

# ILS or LOC RWY 28R

SAN FRANCISCO INTL (SFO)

RNAV 1-GPS or RADAR required for procedure entry.

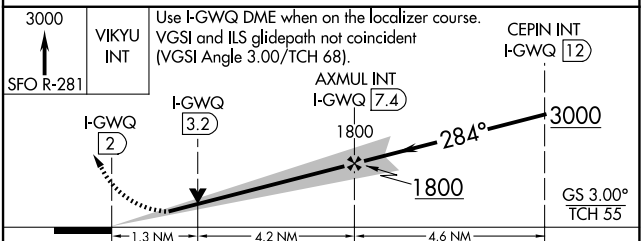
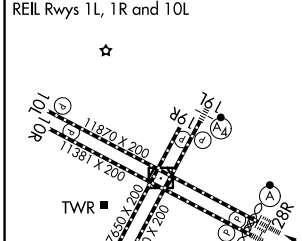
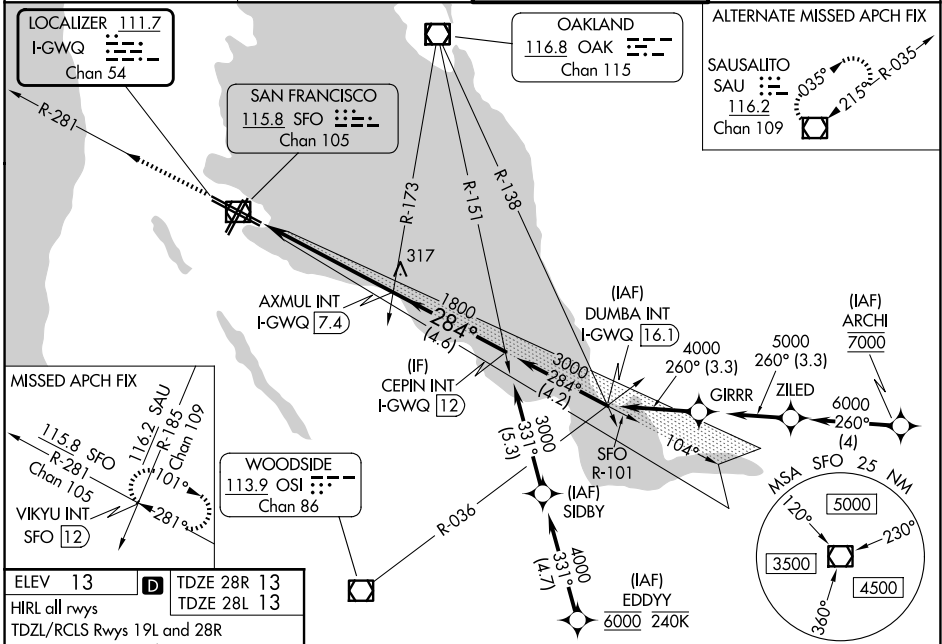
**⚠** Circling NA to Rwy 10L, 10R, 19L, and 19R. Circling Rwy 1L, 1R NA at night. LOC procedure NA during simultaneous operations. For inop ALS increase S-LOC 28R\* Cat C/D visibility to 1 3/8 SM. Simultaneous approach authorized. Simultaneous operations require use of vertical guidance; maintain last assigned altitude until established on glideslope.

ALSF-2 Rwy 28R

MALSR Rwy 28L

MISSED APPROACH: Climb to 3000 on SFO VOR/DME R-281 to VIKYU INT/SFO 12 DME and hold.  
\*Missed approach requires minimum climb of 350 feet per NM to 1900; if unable to meet climb gradient, see ILS or LOC RWY 28L.

D-ATIS <b>113.7 115.8 118.85</b>	NORCAL APP CON <b>134.5 338.2</b>	SAN FRANCISCO TOWER <b>120.5 269.1</b>	GND CON <b>121.8</b>
-------------------------------------	--------------------------------------	---	-------------------------



ELEV 13	TDZE 28R 13	TDZE 28L 13			
HIRL all rwys					
TDZL/RCLS Rwys 19L and 28R					
REIL Rwy 1L, 1R and 10L					
FAF to MAP 5.4 NM					
Knots	60	90	120	150	180
Min:Sec	5:24	3:36	2:42	2:10	1:48
CATEGORY	A	B	C	D	
S-ILS 28R*	213/18		200 (200-1/2)		
S-LOC 28R*	480/24		467 (500-1/2)		480/50 467 (500-1)
SIDESTEP* 28L	480/55		467 (500-1)		480-1 1/2 467 (500-1 1/2)
CIRCLING	740-1	960-1 1/4	1560-3		NA
	727 (800-1)	947 (1000-1 1/4)	1547 (1600-3)		