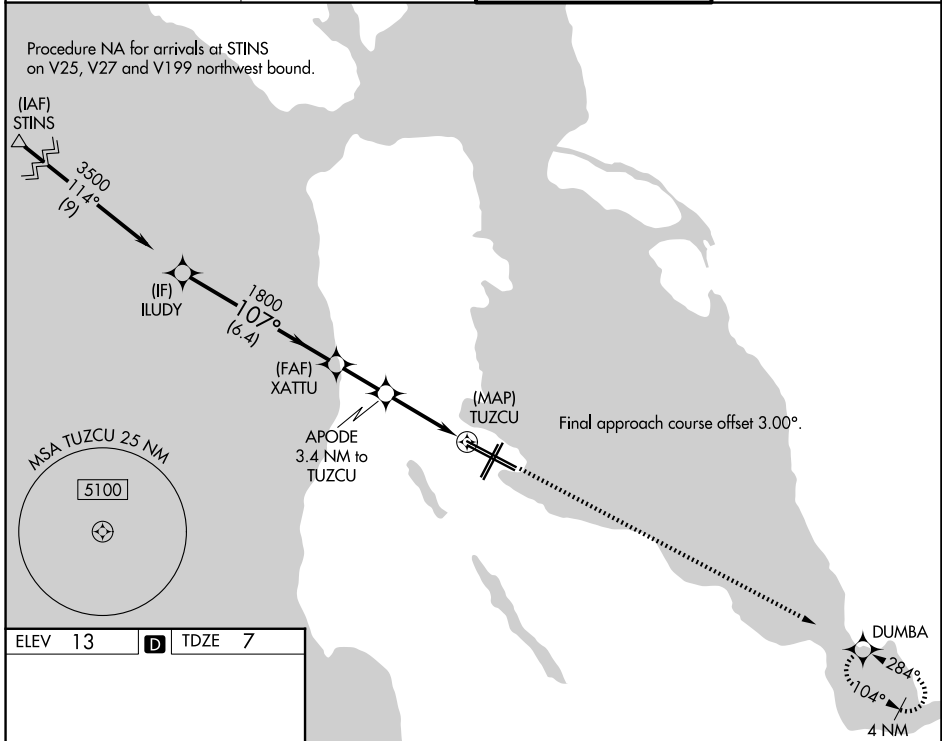


WAAS CH <b>93946</b> <b>W10A</b>	APP CRS <b>107°</b>	Rwy Ldg <b>11193</b> TDZE <b>7</b> Apt Elev <b>13</b>
--	------------------------	---

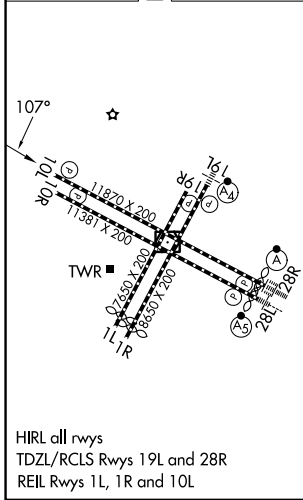
# RNAV (GPS) RWY 10L

SAN FRANCISCO INTL (SFO)

RNP APCH - GPS.		MISSED APPROACH: Climb to 500, then climb to 3000 direct DUMBA and hold.	
<p>▼ For uncompensated Baro-VNAV systems, LNAV/VNAV NA below 4°C or above 54°C. Rwy 10L helicopter visibility reduction below RVR 4000 NA.</p>			
D-ATIS <b>113.7 115.8 118.85</b>	NORCAL APP CON <b>134.5 338.2</b>	SAN FRANCISCO TOWER <b>120.5 269.1</b>	GND CON <b>121.8</b>



ELEV 13	<b>D</b>	TDZE 7
---------	----------	--------



HIRL all rwys  
TDZL/RCLS Rwy 19L and 28R  
REIL Rwy 1L, 1R and 10L

ILUDY	VGSi and RNAV glidepath not coincident (VGSi Angle 3.00/TCH 80).			500	3000	DUMBA
				↑	↑	✧
3500	XATTU	APODE	TUZCU			
	1800	3.4 NM to TUZCU				
			1140			
	6.4 NM	2.1 NM	3.4 NM			
GP 3.00°						
TCH 55						
CATEGORY	A	B	C	D		
LPV DA	257/40		250 (300-3/4)			
LNAV/VNAV DA	494-1 3/8		487 (500-1 3/8)			
LNAV MDA	1080-1 1/4	1080-1 1/2	1080-3		1073 (1100-3)	
	1073 (1100-1 1/4)	1073 (1100-1 1/2)				