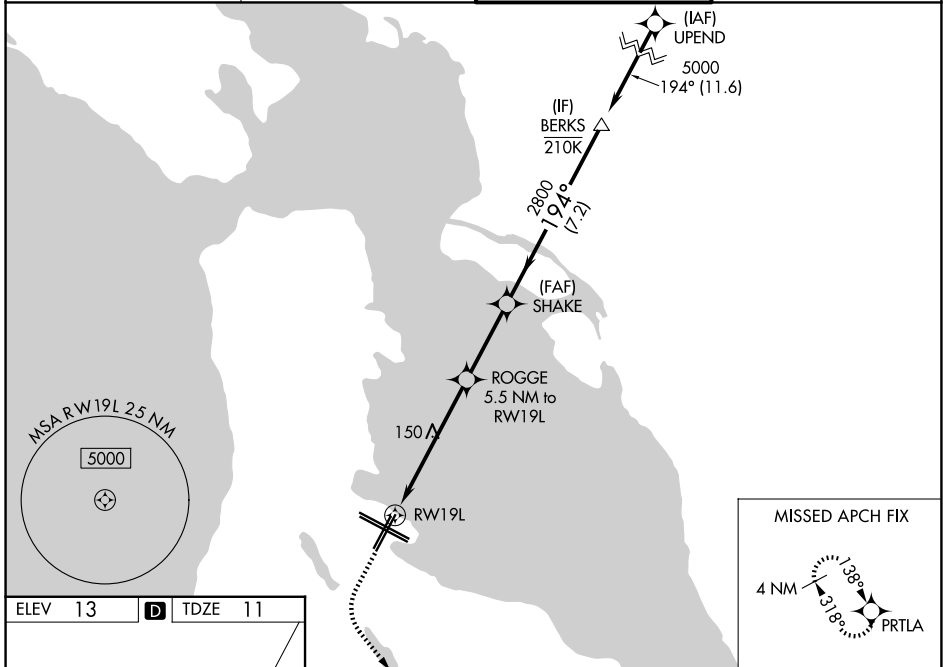


WAAS CH 58015 W19A	APP CRS 194°	Rwy Ldg 8650 TDZE 11 Apt Elev 13
--	------------------------	---

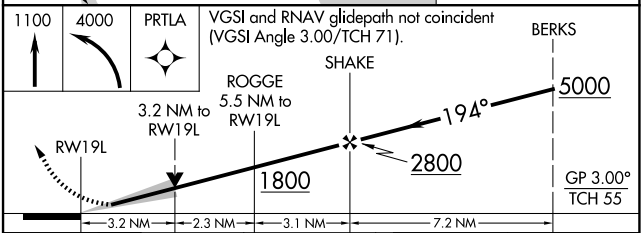
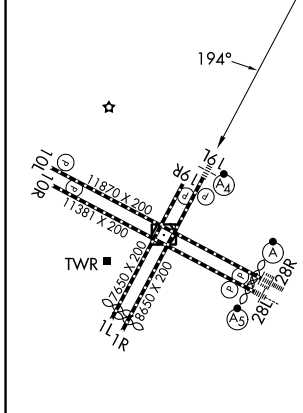
RNAV (GPS) RWY 19L

SAN FRANCISCO INTL (SFO)

RNP APCH - GPS.		MALSF	MISSED APPROACH: Climb to 1100 then climbing left turn to 4000 direct PRTLA and hold.
<p>⚠ For uncompensated Baro-VNAV systems, LNAV/VNAV NA below 4°C or above 54°C. For inop ALS, increase LPV DA* (CG 357) all Cats visibility to RVR 4500. For inop ALS, increase LNAV/VNAV all Cats visibility to 2½ SM and LNAV Cats C and D visibility to 3 SM.</p>		<p>⚠</p>	<p>*Missed approach requires minimum climb of 357 feet per NM to 2000.</p>
D-ATIS 113.7 115.8 118.85	NORCAL APP CON 134.5 338.2	SAN FRANCISCO TOWER 120.5 269.1	GND CON 121.8



ELEV 13	D	TDZE 11
---------	----------	---------



CATEGORY	A	B	C	D
LPV DA*		293/40	282 (300-¾)	
LPV DA		656-1½	645 (700-1½)	
LNAV/VNAV DA*		350/40	339 (400-¾)	
LNAV/VNAV DA		794-2	783 (800-2)	
LNAV MDA	1100/55 1089 (1100-1)	1100-1¼ 1089 (1100-1¼)	1100-2½	1089 (1100-2½)

TDZL/RCLS Rwy 19L and 28R
REIL Rwy 1L, 1R and 10L
HIRL all rwy