

WAAS CH 53415 W28B	APP CRS 284°	Rwy Ldg 10275 TDZE 13 Apt Elev 13
--	------------------------	--

RNAV (GPS) RWY 28L

SAN FRANCISCO INTL (SFO)

RNP APCH.

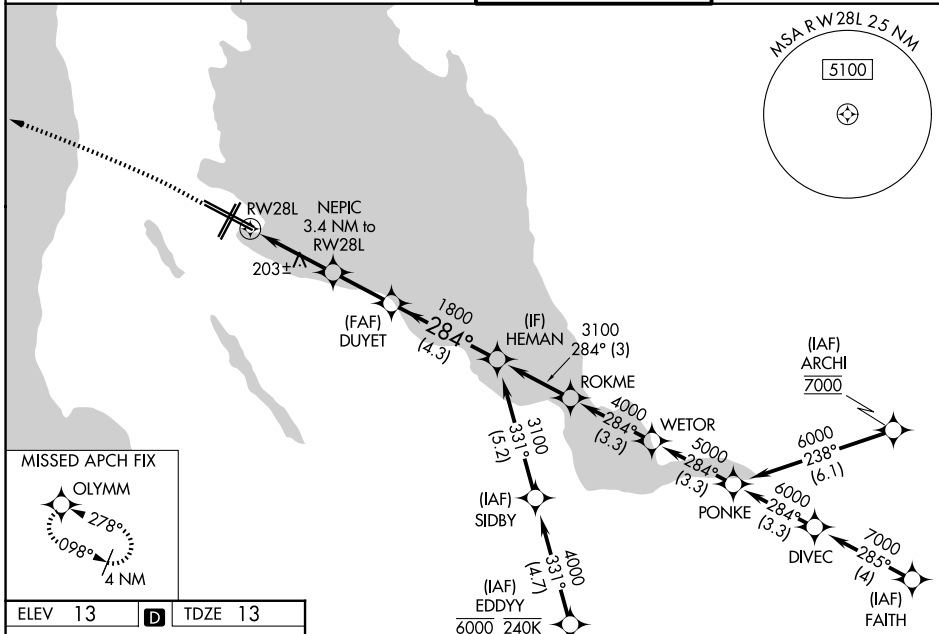
⚠ For uncompensated Baro-VNAV systems, LNAV/VNAV NA below 3°C or above 54°C. For inop ALS, increase LPV † all Cats visibility to 2½ SM, increase LNAV/VNAV all Cats visibility to 2 SM. Circling NA to Rwy 10L, 10R, 19L, and 19R. Circling Rwy 1L, 1R NA at night.
#RVR 1800 authorized with use of FD or AP or HUD to DA.

MALSRL

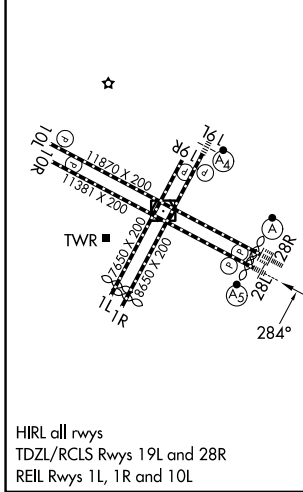


MISSED APPROACH: Climb to 1020 then climbing left turn to 4000 direct OLYMM and hold, continue climb-in-hold to 4000.
#Missed approach requires minimum climb of 330 feet per NM to 1600.

D-ATIS 113.7 115.8 118.85	NORCAL APP CON 134.5 338.2	SAN FRANCISCO TOWER 120.5 269.1	GND CON 121.8
-------------------------------------	--------------------------------------	---	-------------------------



ELEV 13	D	TDZE 13
---------	----------	---------



1020	4000	OLYMM	VGSI and RNAV glidepath not coincident (VGSI Angle 2.85/TCH 67).	
			HEMAN	
			DUYET 1800	HEMAN 3100
			RWY 28L	1080*
			3.4 NM	2.4 NM 4.3 NM
CATEGORY	A	B	C	D
LPV DA#	213/24		200 (200-½)	
LPV DA †	798-1¾		785 (800-1¾)	
LNAV/VNAV DA	770-1¾		757 (800-1¾)	
LNAV MDA	1020/40 1007 (1100-¾)	1020/55 1007 (1100-1)	1020-2½ 1007 (1100-2½)	
CIRCLING	1020-1¼ 1007 (1100-1¼)	1020-1½ 1007 (1100-1½)	1560-3 1547 (1600-3)	NA