

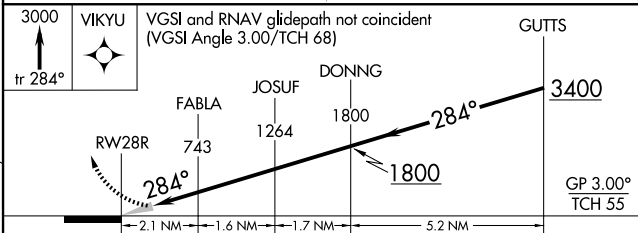
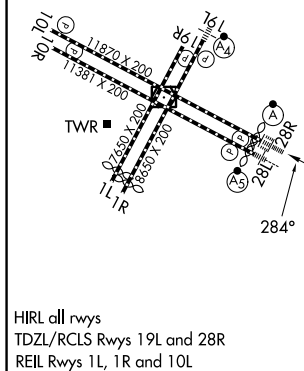
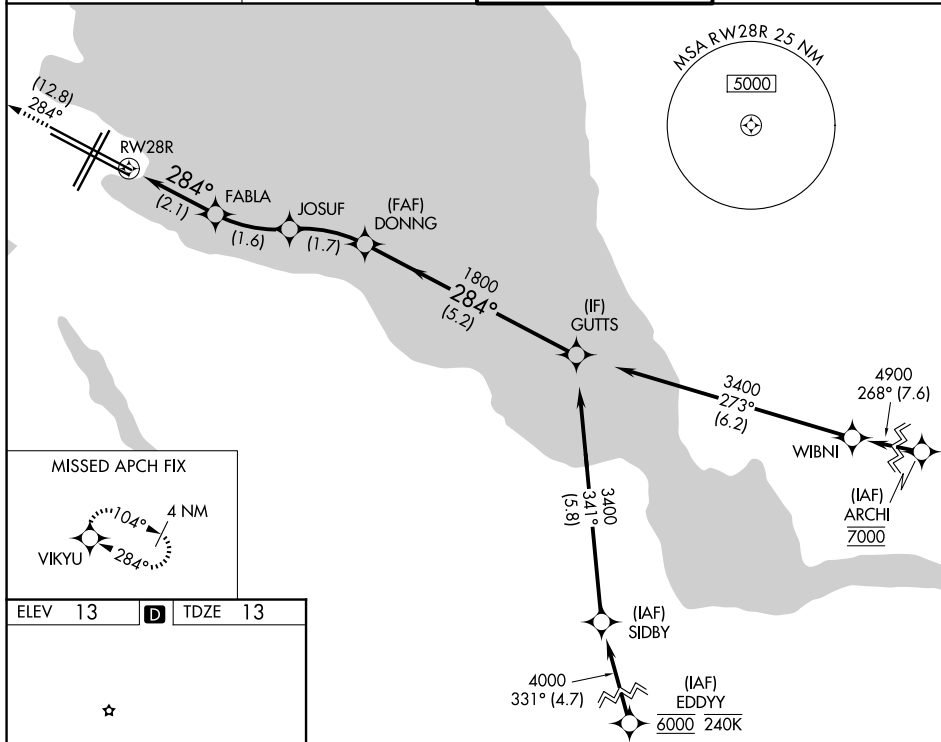
APP CRS	Rwy Ldg	<b>11236</b>
<b>284°</b>	TDZE	<b>13</b>
	Apt Elev	<b>13</b>

# RNAV (RNP) Y RWY 28R

SAN FRANCISCO INTL (SFO)

RNP AR APCH, RF required. ▼ For uncompensated Baro-VNAV systems, procedure NA below 3°C or above 54°C. For inop ALS, increase RNP 0.11 all Cats visibility to RVR 4000 and RNP 0.30 all Cats visibility to RVR 4500.	ALSF-2 	MISSED APPROACH: Climb to 3000 on track 284° to VIKYU and hold. * Missed approach requires minimum climb of 250 feet per NM to 1600. # Missed approach requires minimum climb of 350 feet per NM to 2100.

D-ATIS <b>113.7 115.8 118.85</b>	NORCAL APP CON <b>134.5 338.2</b>	SAN FRANCISCO TOWER <b>120.5 269.1</b>	GND CON <b>121.8</b>
-------------------------------------	--------------------------------------	---	-------------------------



CATEGORY	A	B	C	D
RNP 0.11 DA*		263/24	250 (300-½)	
RNP 0.30 DA#		326/24	313 (400-½)	

## AUTHORIZATION REQUIRED

SW-2, 14 MAY 2026 to 11 JUN 2026

SW-2, 14 MAY 2026 to 11 JUN 2026