

WAAS CH <b>57945</b> <b>W19D</b>	APP CRS <b>194°</b>	Rwy Ldg TDZE Apt Elev	<b>7650</b> <b>11</b> <b>13</b>
--	------------------------	-----------------------------	---------------------------------------

# RNAV (GPS) Z RWY 19R

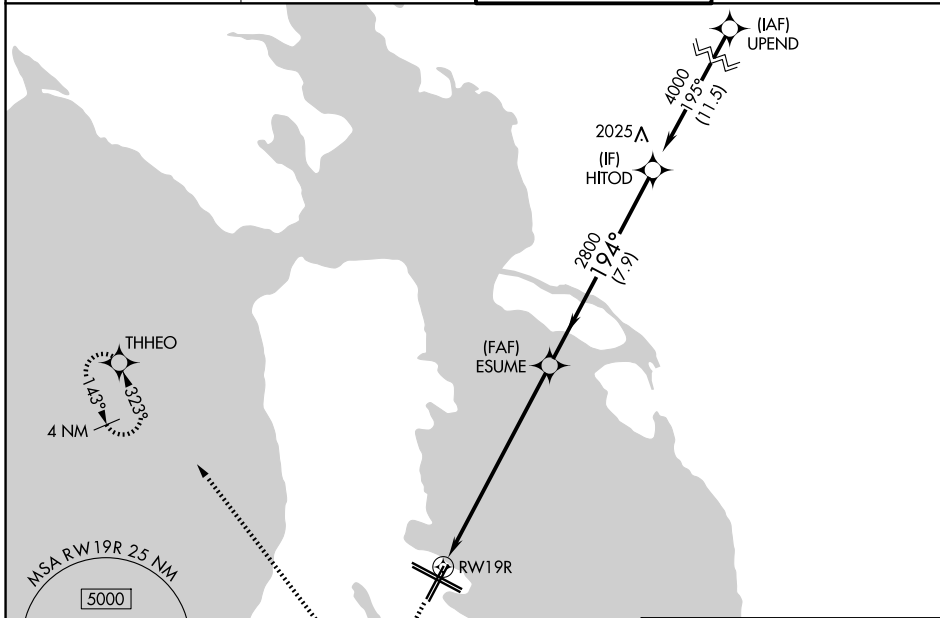
SAN FRANCISCO INTL (SFO)

RNP APCH - GPS.

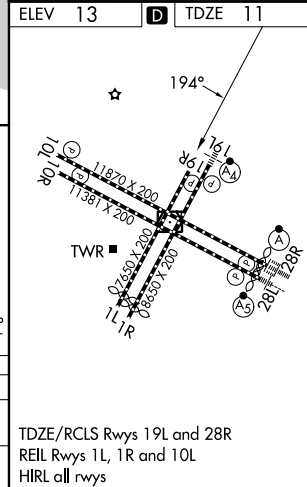
Simultaneous approach authorized. Simultaneous operations require use of vertical guidance; maintain last assigned altitude until established on glidepath. For uncompensated Baro-VNAV systems, LNAV/VNAV NA below 4°C or above 54°C. Simultaneous approach NA below 12°C (52°F). Use of FD or AP required during simultaneous operations.

MISSED APPROACH: Climb to 600 then climbing right turn to 3000 direct THHEO and hold.  
 \*Missed approach requires minimum climb of 395 feet per NM to 2100; if unable to meet climb gradient, see RNAV (GPS) Y RWY 19R.

D-ATIS <b>113.7 115.8 118.85</b>	NORCAL APP CON <b>134.5 338.2</b>	SAN FRANCISCO TOWER <b>120.5 269.1</b>	GND CON <b>121.8</b>
-------------------------------------	--------------------------------------	---	-------------------------



ELEV 13	TDZE 11				
600	3000	THHEO	HITOD		
RWY 19R		ESUME	4000		
8.2 NM		7.9 NM			
CATEGORY		A	B	C	D
LPV	DA*	317/45		306 (400-7/8)	
LNAV/VNAV	DA*	328/45		317 (400-7/8)	



TDZE/RCLS Rwyys 19L and 28R  
 REIL Rwyys 1L, 1R and 10L  
 HIRL all rwyys

SW-2, 14 MAY 2026 to 11 JUN 2026

SW-2, 14 MAY 2026 to 11 JUN 2026