

SAN FRANCISCO FIVE DEPARTURE

AL-375 (FAA)

SAN FRANCISCO INTL (SFO)
SAN FRANCISCO, CALIFORNIA

**TOP ALTITUDE:
ASSIGNED BY ATC**

RADAR required.
Rwys 1L/R: DME required.

NORCAL DEP CON
120.9 323.2
D-ATIS
113.7 115.8 118.85
CPDLC
GND CON
121.8
SAN FRANCISCO TOWER
120.5 269.1

RED BLUFF
115.7 RBL
Chan 104

TAKEOFF MINIMUMS

Rwys 1L/R: Standard.

Rwys 28L/R: Standard with minimum climb of 351'/NM to 1300.

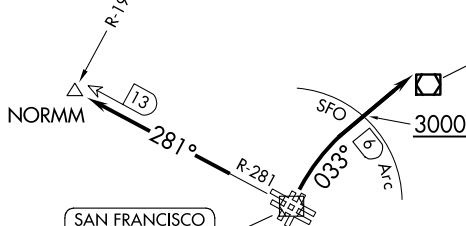
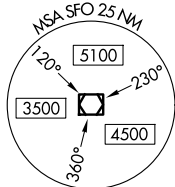
SACRAMENTO
115.2 SAC
Chan 99

SAUSALITO
116.2 SAU
Chan 109

LINDEN
114.8 LIN
Chan 95

OAKLAND
116.8 OAK
Chan 115

SAN FRANCISCO
115.8 SFO
Chan 105



NOTE: Chart not to scale.

DEPARTURE ROUTE DESCRIPTION

TAKEOFF RUNWAYS 1L/R: Climbing right turn heading 033° or ATC assigned heading to cross SFO 6 DME at or above 3000 for RADAR vectors to assigned route/fix. Expect further clearance to filed altitude 10 minutes after departure.

TAKEOFF RUNWAYS 28L/R: Climb on SFO VOR/DME R-281 to NORMM INT/SFO 13 DME; then expect RADAR vectors to assigned route/fix. Expect further clearance to filed altitude 10 minutes after departure.

LOST COMMUNICATIONS:

If not in contact with departure control after reaching 3000, continue climb to filed altitude and proceed direct to assigned route/fix.

SAN FRANCISCO FIVE DEPARTURE

SW-2, 14 MAY 2026 to 11 JUN 2026

SW-2, 14 MAY 2026 to 11 JUN 2026