

(LOZIT.STLER4) 24193

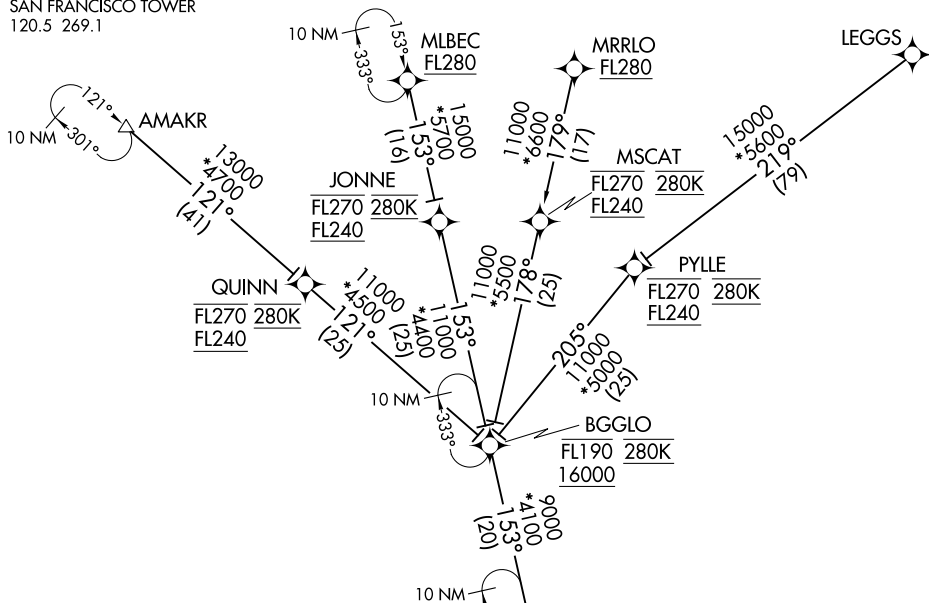
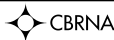
STLER FOUR ARRIVAL (RNAV)

AL-375 (FAA)

SAN FRANCISCO INTL (SF'O)
SAN FRANCISCO, CALIFORNIA

OAKLAND CENTER
125.85 323.0
NORCAL APP CON
133.95 317.6
D-ATIS
113.7 115.8 118.85
GND CON
121.8
SAN FRANCISCO TOWER
120.5 269.1

RNAV 1 - DME/DME/IRU or GPS.
RADAR required.



ARRIVAL ROUTE DESCRIPTION

- AMAKR TRANSITION (AMAKR.STLER4)
- LEGGGS TRANSITION (LEGGGS.STLER4)
- MLBEC TRANSITION (MLBEC.STLER4)
- MRRLO TRANSITION (MRRLO.STLER4)

From LOZIT on track 175° to cross STLER at or above 8000.

LANDING RUNWAYS 10L/R: From STLER on track 175° to cross PDROW at 7000, then on track 180°. Expect RADAR vectors to final approach course.

LANDING RUNWAYS 19L/R: From STLER on track 087° to WESLA, then on track 002° to cross MVRKK at 7000 and at 210K, then on track 360°. Expect RADAR vectors to final approach course.

STLER FOUR ARRIVAL (RNAV)

(LOZIT.STLER4) 11JUL24

SAN FRANCISCO, CALIFORNIA
SAN FRANCISCO INTL (SF'O)

SW-2, 14 MAY 2026 to 11 JUN 2026

SW-2, 14 MAY 2026 to 11 JUN 2026