

EL TORO FIVE DEPARTURE
(ELB5, ELB) 16MAY24

JOHN WAYNE/ORANGE COUNTY (SNA)
SANTA ANA, CALIFORNIA

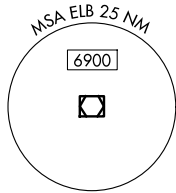
SOCAL DEP CON
133.85 346.35
D-ATIS
126.0
CLINC DEL
118.0
GND CON
120.8

EL TORO
117.2 ELB
Chan 119

SANTA CATALINA
114.15 SXC
Chan 88(Y)

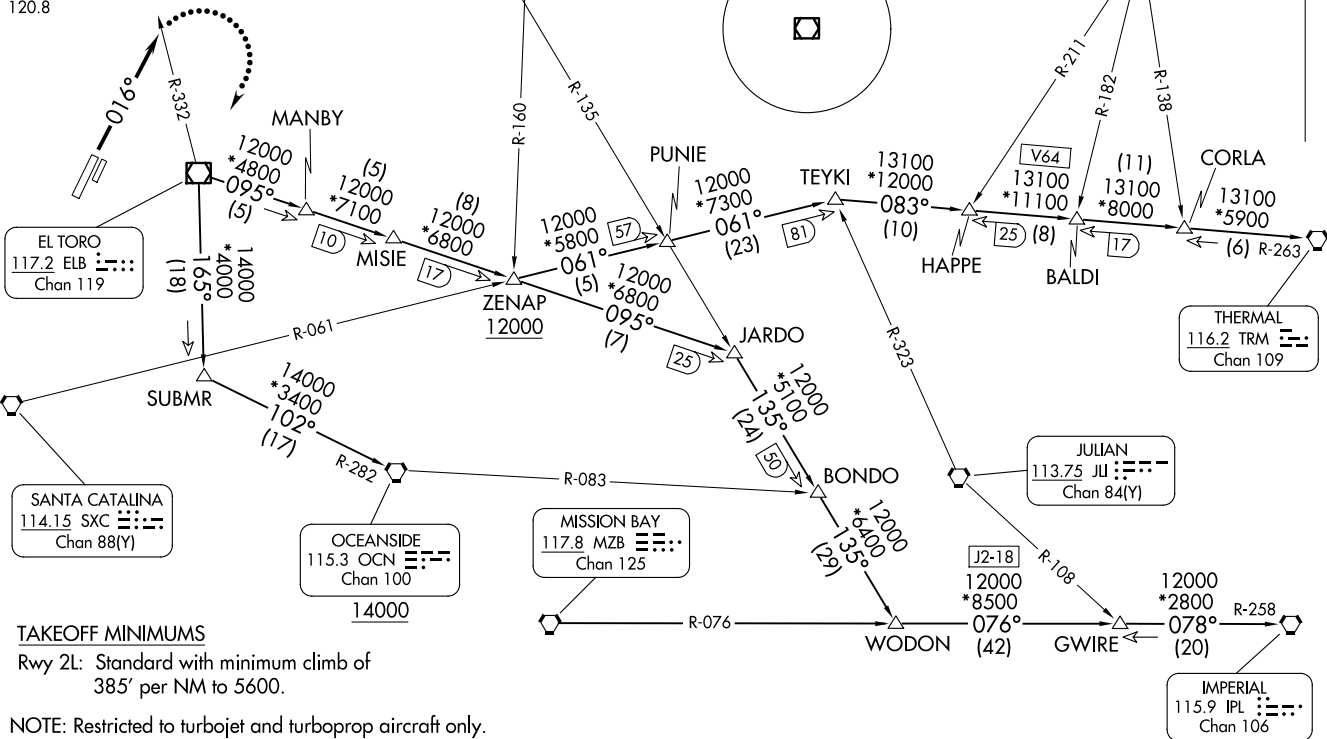
PARADISE
112.2 PDZ
Chan 59

RIVERSIDE
108.6 RAL



PALM SPRINGS
115.5 PSP
Chan 102

TOP ALTITUDE:
ASSIGNED BY ATC



THERMAL
116.2 TRM
Chan 109

JULIAN
113.75 JU
Chan 84(Y)

MISSION BAY
117.8 MZB
Chan 125

OCEANSIDE
115.3 OCN
Chan 100

IMPERIAL
115.9 IPL
Chan 106

TAKEOFF MINIMUMS
Rwy 2L: Standard with minimum climb of 385' per NM to 5600.

NOTE: Restricted to turbojet and turboprop aircraft only.

NOTE: Chart not to scale.

(CONTINUED ON FOLLOWING PAGE)

(ELB5, ELB) 25275
EL TORO FIVE DEPARTURE

AL-377 (FAA)

JOHN WAYNE/ORANGE COUNTY (SNA)
SANTA ANA, CALIFORNIA



DEPARTURE ROUTE DESCRIPTION

TAKEOFF RUNWAY 2L: Climb on heading 016° for RADAR vectors to ELB VOR/DME, thence

. . . .(transition) or (assigned route). Maintain ATC assigned altitude. Expect filed altitude ten minutes after departure.

LOST COMMUNICATIONS: If not in contact with departure control by ELB R-332, turn right direct ELB VOR/DME, climb to 7000 and proceed on assigned transition or route. Climb to filed altitude ten minutes after departure.

IMPERIAL TRANSITION (ELB5.IPL): From over ELB VOR/DME on ELB R-095 to JARDO, then on PDZ R-135 to WODON, then on MZB R-076 and IPL R-258 to GWIRE, then on IPL R-258 to IPL VORTAC.

OCEANSIDE TRANSITION (ELB5.OCN): From over ELB VOR/DME on ELB R-165 to SUBMR, then on OCN R-282 to OCN VORTAC.

THERMAL TRANSITION (ELB5.TRM): From over ELB VOR/DME on ELB R-095 to ZENAP, then on SXC R-061 to TEYKI, then on TRM R-263 to TRM VORTAC.

SW-3, 14 MAY 2026 to 11 JUN 2026

SW-3, 14 MAY 2026 to 11 JUN 2026