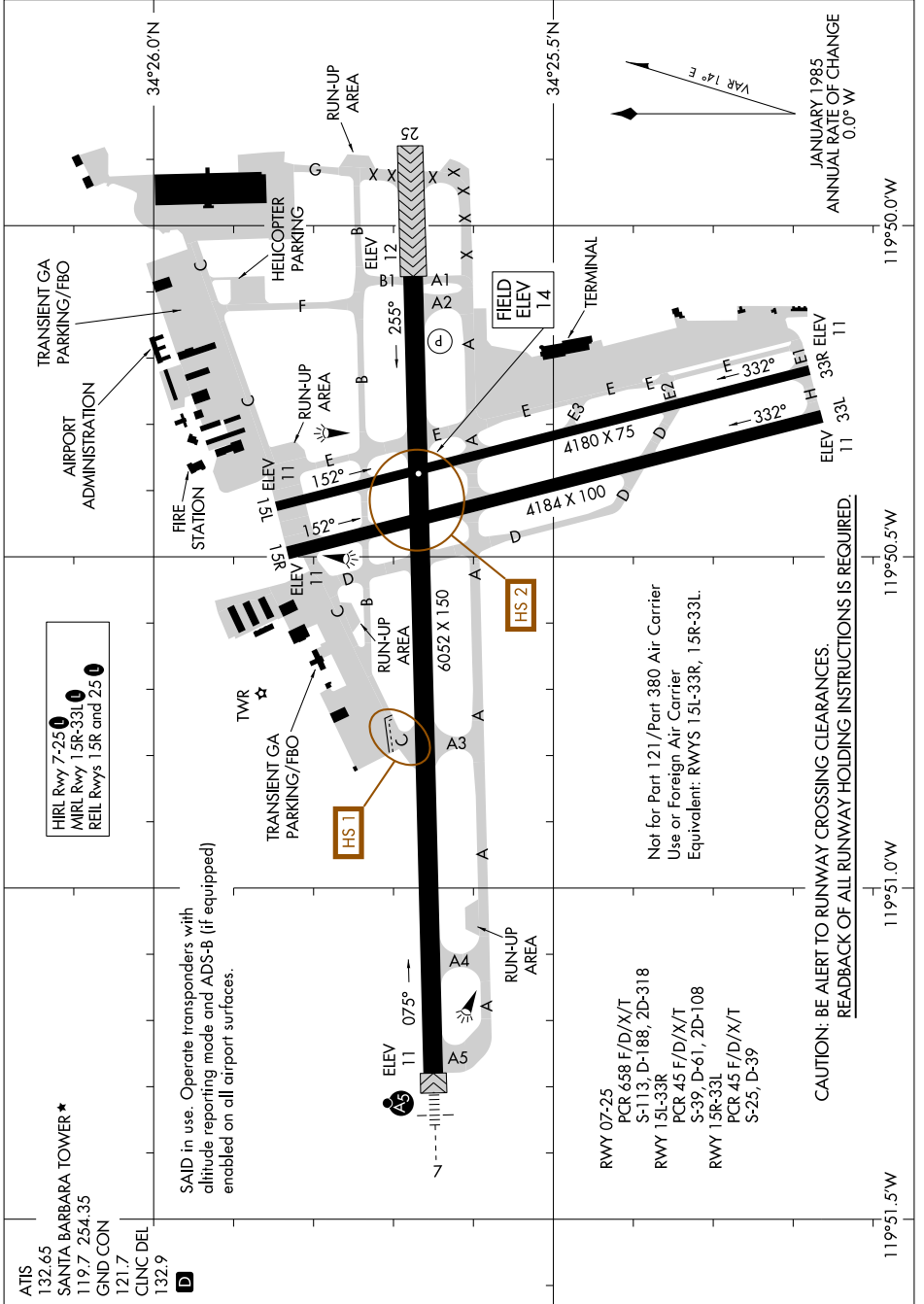


AIRPORT DIAGRAM

AL-378 (FAA)

SANTA BARBARA MUNI (S.B.A)
SANTA BARBARA, CALIFORNIA

SW-3, 14 MAY 2026 to 11 JUN 2026



SAID in use. Operate transponders with altitude reporting mode and ADS-B (if equipped) enabled on all airport surfaces.

Not for Part 121/Part 380 Air Carrier Use or Foreign Air Carrier Equivalent: RWYS 15L-33R, 15R-33L.

RWY 07-25
PCR 658 F/D/X/T
S-113, D-188, 2D-318
RWY 15L-33R
PCR 45 F/D/X/T
S-39, D-61, 2D-108
RWY 15R-33L
PCR 45 F/D/X/T
S-25, D-39

CAUTION: BE ALERT TO RUNWAY CROSSING CLEARANCES.
READBACK OF ALL RUNWAY HOLDING INSTRUCTIONS IS REQUIRED.

AIRPORT DIAGRAM

SANTA BARBARA, CALIFORNIA
SANTA BARBARA MUNI (S.B.A)

SW-3, 14 MAY 2026 to 11 JUN 2026