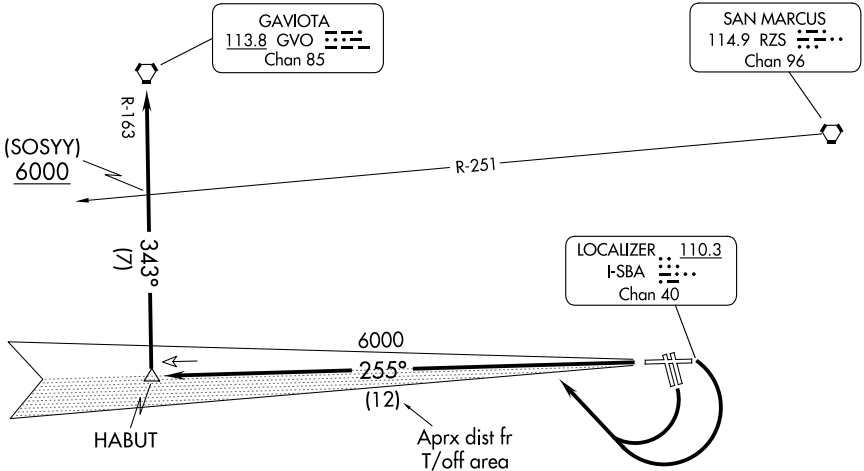


ATIS  
 132.65  
 CLNC DEL  
 132.9  
 GND CON  
 121.7  
 SANTA BARBARA TOWER ★  
 119.7 (CTAF) 254.35  
 SANTA BARBARA DEP CON  
 120.55 319.15



NOTE: IFR departure Rwy 33L/R not authorized.

NOTE: Minimum (ATC) climb of 385' per NM to 6000.

NOTE: Chart not to scale.



## DEPARTURE ROUTE DESCRIPTION

TAKEOFF RUNWAYS 7 and 15L/R: Turn right, intercept I-SBA west course to HABUT INT, thence via GVO R-163 to GVO VORTAC. Cross RZS R-251 at or above 6000'.

TAKEOFF RUNWAY 25: Intercept I-SBA west course to HABUT INT, thence via GVO R-163 to GVO VORTAC. Cross RZS R-251 at or above 6000'.