

LOC/DME I-SBA <b>110.3</b> Chan <b>40</b>	APP CRS <b>075°</b>	Rwy Ldg TDZE <b>13</b> Apt Elev <b>14</b>	<b>6052</b>
---	------------------------	---	-------------

# ILS or LOC RWY 7

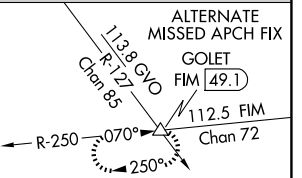
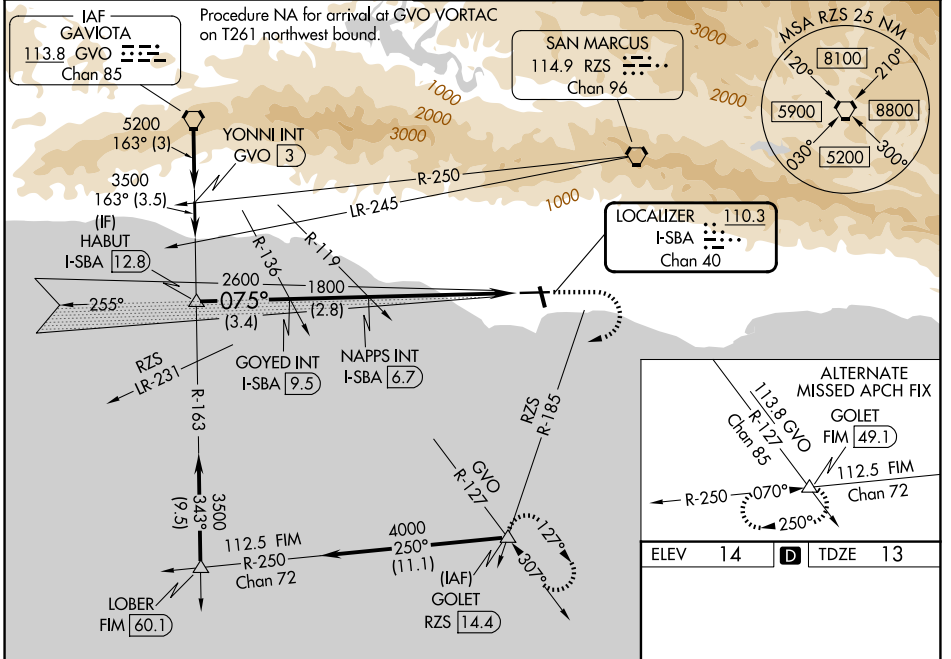
SANTA BARBARA MUNI (SBA)

**⚠** VDP NA when using OXR altimeter setting. Circling Rwy 15L/R and 33L/R NA at night. When local altimeter setting not received, use OXR altimeter setting: increase DA to 296 feet; increase all MDAs 100 feet and S-LOC 7 visibility Cats C and D to 1½ SM, Circling Cat A visibility to 1¼ SM and Circling visibility Cat C to 2¾ SM. For inop ALS, when using OXR altimeter setting, increase S-ILS 7 all Cats visibility to RVR 4500 and S-LOC 7 Cats C and D visibility to 1¾ SM. Circling NA for Cats C and D north of Rwy 7-25.  
\*RVR 1800 authorized with use of FD or AP or HUD to DA (NA when using OXR altimeter setting).

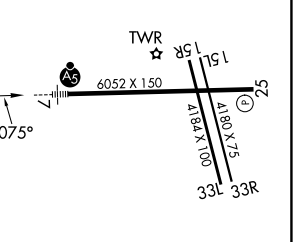
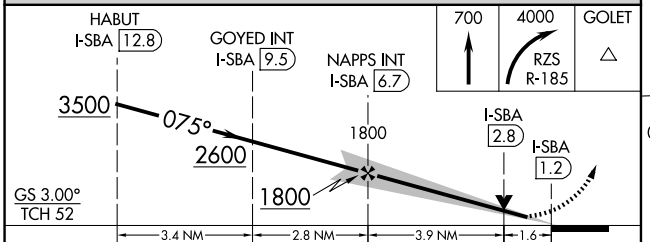
**MALS**  
45

**MISSED APPROACH:**  
Climb to 700 then climbing right turn to 4000 on RZS VORTAC R-185 to GOLET INT/RZS 14.4 DME and hold, continue climb-in-hold to 4000.

ATIS <b>132.65</b>	SANTA BARBARA APP CON* <b>120.55 319.15</b> (151°-329°) <b>125.4 291.1</b> (330°-150°)	SANTA BARBARA TOWER* <b>119.7</b> (CTAF) <b>0 254.35</b>	GND CON <b>121.7</b>	UNICOM <b>122.95</b>
-----------------------	--	---	-------------------------	-------------------------



ELEV 14	<b>D</b>	TDZE 13
---------	----------	---------



CATEGORY	A	B	C	D
S-ILS 7*	213/24 200 (200-½)			
S-LOC 7	560/24	547 (600-½)	560/60	547 (600-1¼)
CIRCLING	800-1 786 (800-1)	840-1¼ 826 (900-1¼)	840-2½ 826 (900-2½)	1000-3 986 (1000-3)

HIRL Rwy 7-25 **①**  
 MIRL Rwy 15R-33L **①**  
 REIL Rws 15R and 25 **①**

FAF to MAP 5.5 NM

Knots	60	90	120	150	180
Min:Sec	5:30	3:40	2:45	2:12	1:50

SW-3, 14 MAY 2026 to 11 JUN 2026

SW-3, 14 MAY 2026 to 11 JUN 2026