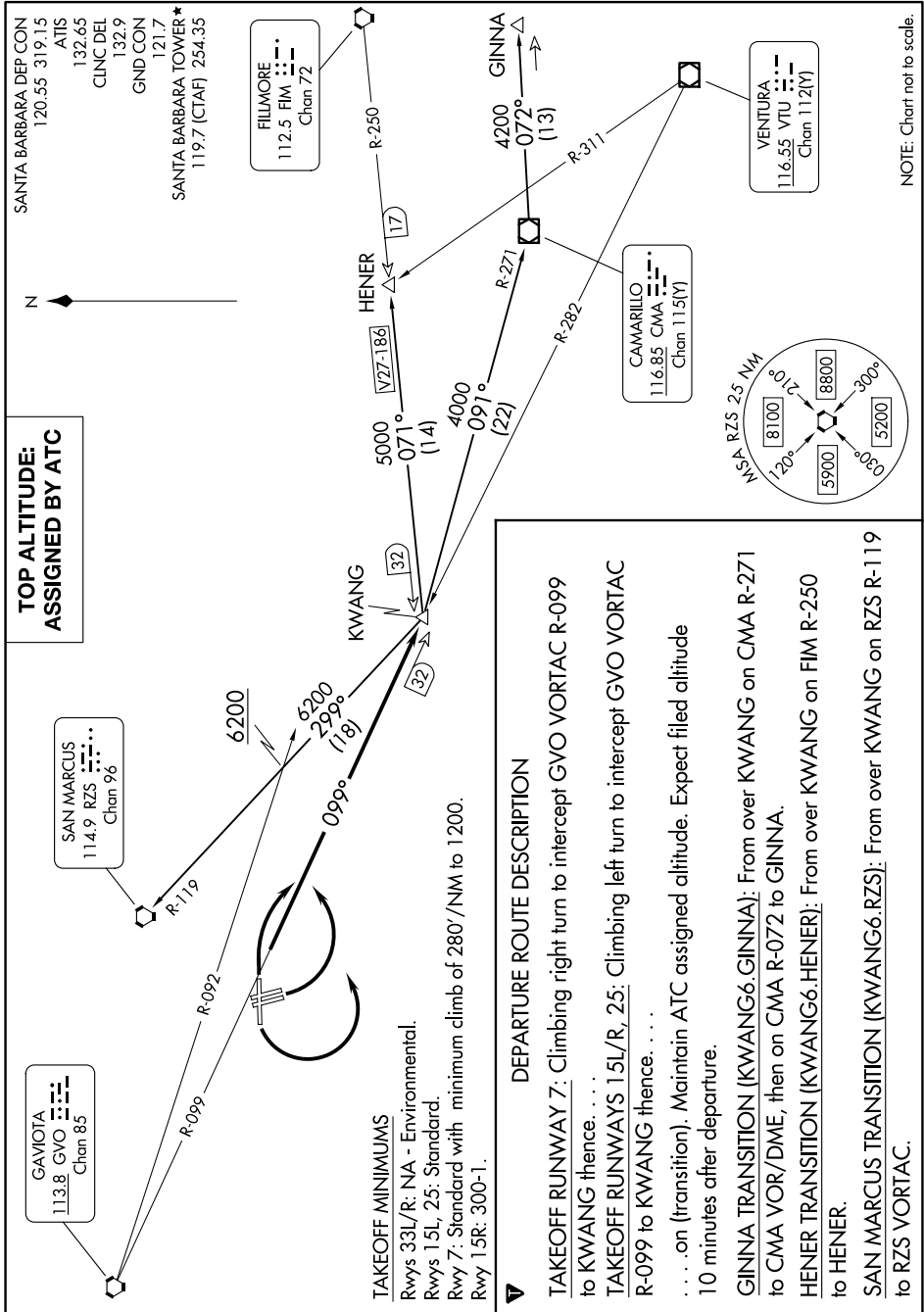


KWANG SIX DEPARTURE

AL-378 (FAA)

SW-3, 14 MAY 2026 to 11 JUN 2026



SW-3, 14 MAY 2026 to 11 JUN 2026

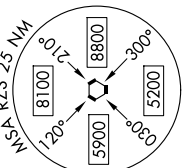
NOTE: Chart not to scale.

SANTA BARBARA DEP CON
120.55 319.15
ATIS
132.65
CINC DEL
132.9
GND CON
121.7
SANTA BARBARA TOWER**
119.7 (CTAF) 254.35

FILMORE
112.5 FIM
Chan 7Z

VENTURA
116.55 VTU
Chan 112(Y)

CAMARILLO
116.85 CMA
Chan 115(Y)



TOP ALTITUDE:
ASSIGNED BY ATC

SAN MARCUS
114.9 RZS
Chan 96

GAVIOTA
113.8 GVO
Chan 85

DEPARTURE ROUTE DESCRIPTION

TAKEOFF RUNWAY 7: Climbing right turn to intercept GVO VORTAC R-099 to KWANG thence. . . .

TAKEOFF RUNWAYS 15L/R, 25: Climbing left turn to intercept GVO VORTAC R-099 to KWANG thence. . . .

. . . on (transition). Maintain ATC assigned altitude. Expect filed altitude 10 minutes after departure.

GINNA TRANSITION (KWANG6.GINNA): From over KWANG on CMA R-271 to CMA VOR/DME, then on CMA R-072 to GINNA.

HENER TRANSITION (KWANG6.HENER): From over KWANG on FIM R-250 to HENER.

SAN MARCUS TRANSITION (KWANG6.RZS): From over KWANG on RZS R-119 to RZS VORTAC.

TAKEOFF MINIMUMS
Rwys 33L/R: NA - Environmental.
Rwys 15L, 25: Standard.
Rwy 7: Standard with minimum climb of 280'/NM to 1200.
Rwy 15R: 300'-1.