

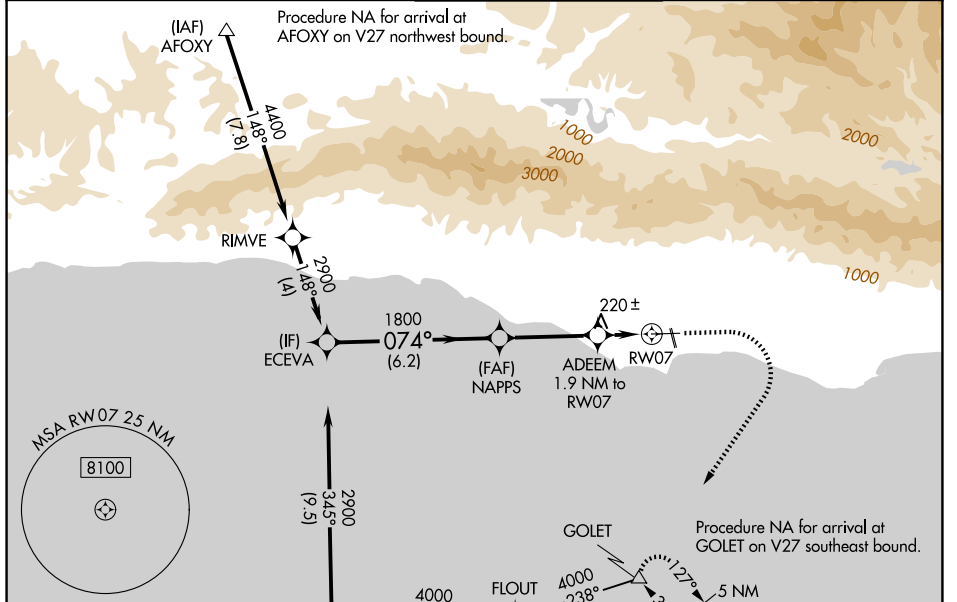
WAAS CH 78306 W07A	APP CRS 074°	Rwy Ldg TDZE Apt Elev	6052 13 14
--	------------------------	-----------------------------	---------------------------------------

RNAV (GPS) RWY 7

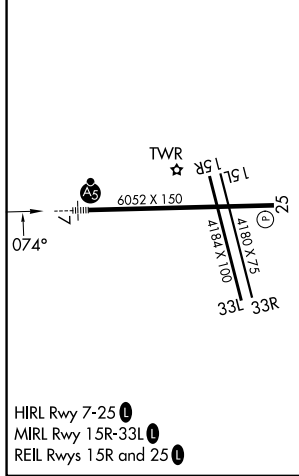
SANTA BARBARA MUNI (SBA)

RNP APCH - GPS.		MALSRL	MISSED APPROACH: Climb to 700 then climbing right turn to 4000 direct GOLET and hold, continue climb-in-hold to 4000.
<p>▼ For uncompensated Baro-VNAV systems, LNAV/VNAV NA below 2°C or above 54°C. Circling Rwy 15L/R and 33L/R NA at night. Circling NA for Cats C and D north of Rwy 7-25. For Inop ALS, increase LNAV/VNAV all Cats visibility to 1 3/8 SM and LNAV Cats C and D increase visibility to 1 3/8 SM.</p>			

ATIS 132.65	SANTA BARBARA APP CON * 120.55 319.15 (151°-329°) 125.4 291.1 (330°-150°)	SANTA BARBARA TOWER * 119.7 (CTAF) 0 254.35	GND CON 121.7	UNICOM 122.95
-----------------------	---	--	-------------------------	-------------------------



ELEV 14	D	TDZE 13
---------	----------	---------



	ECEVA	NAPPS	ADEEM 1.9 NM to RW07	GOLET
	2900	1800	680	700 4000
		074°	1.3 NM to RW07	
		1800		
		6.2 NM	3.5 NM	0.6 1.3 NM
CATEGORY	A	B	C	D
LPV DA		263/24	250 (300-1/2)	
LNAV/VNAV DA		480/50	467 (500-1)	
LNAV MDA	480/24	467 (500-1/2)	480/50	467 (500-1)
CIRCLING	700-1 686 (700-1)	760-1 746 (800-1)	760-2 1/4 746 (800-2 1/4)	900-3 886 (900-3)