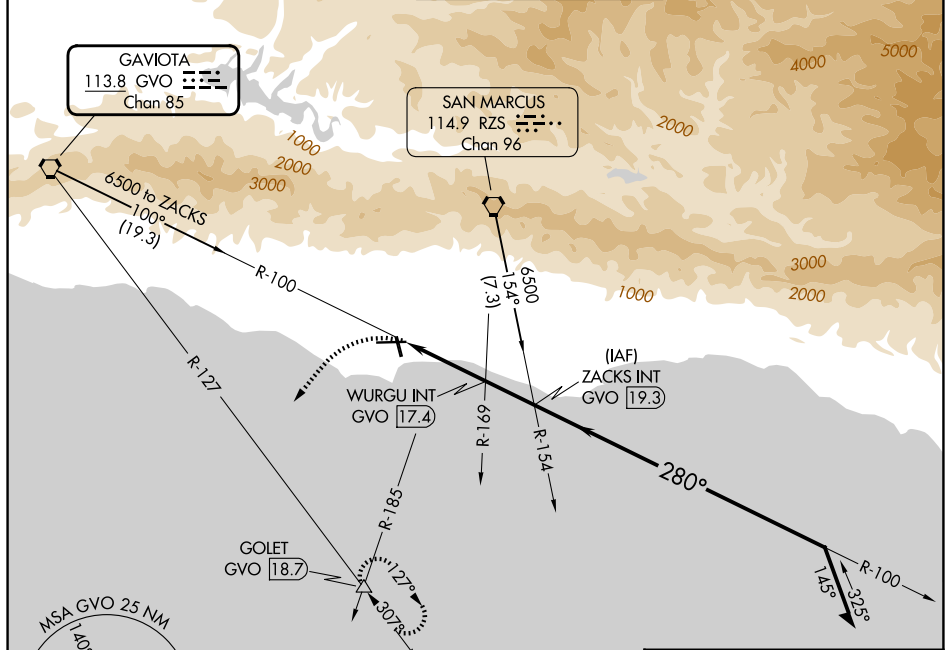


VORTAC GVO 113.8 Chan 85	APP CRS 280°	Rwy Ldg 6052 TDZE 14 Apt Elev 14
--	------------------------	---

VOR RWY 25

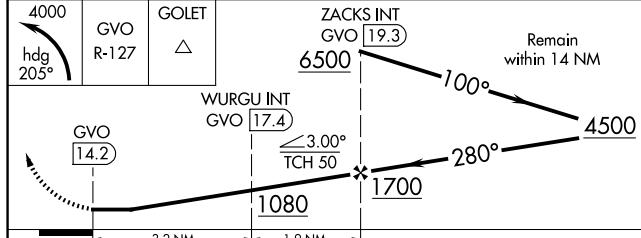
SANTA BARBARA MUNI (SBA)

<p>Circling Rwy 15L/R and 33L/R NA at night. Rwy 25 helicopter visibility reduction below 1 SM NA. Circling NA for Cats C and D north of Rwy 7-25.</p>	<p>MISSED APPROACH: Climbing left turn to 4000 on heading 205° and GVO VORTAC R-127 to GOLET INT/18.7 DME and hold, continue climb-in-hold to 4000.</p>			
	<p>ATIS 132.65</p>	<p>SANTA BARBARA APP CON * 120.55 319.15 (151°-329°) 125.4 291.1 (330°-150°)</p>	<p>SANTA BARBARA TOWER * 119.7 (CTAF) 0 254.35</p>	<p>GND CON 121.7</p>

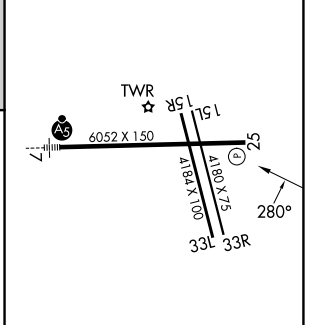


SW-3, 14 MAY 2026 to 11 JUN 2026

SW-3, 14 MAY 2026 to 11 JUN 2026



ELEV 14	D	TDZE 14
---------	----------	---------



CATEGORY	A	B	C	D
S-25	920-1¼ 906 (1000-1¼)		920-2½ 906 (1000-2½)	
CIRCLING	920-1¼ 906 (1000-1¼)		920-2¾ 906 (1000-2¾)	920-3 906 (1000-3)

HIRL Rwy 7-25 0	
MIRL Rwy 15R-33L 0	
REIL Rws 15R and 25 0	
FAF to MAP 5.1 NM	
Knots	60 90 120 150 180
Min:Sec	5:06 3:24 2:33 2:02 1:42