


VOR GLJ <b>113.05</b>	APP CRS <b>117°</b>	Rwy Ldg TDZE Apt Elev	<b>8004</b> <b>230</b> <b>261</b>
--------------------------	------------------------	-----------------------------	---

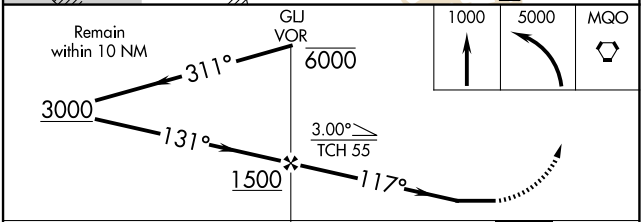
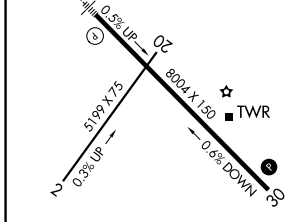
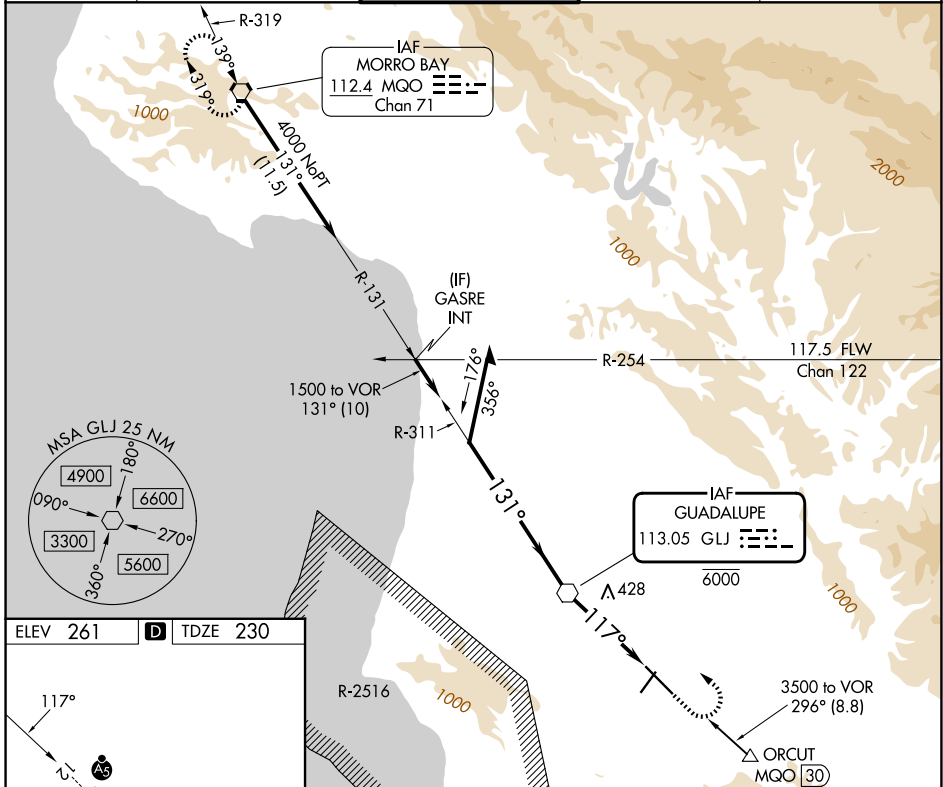
# VOR RWY 12

SANTA MARIA PUB/CAPT G ALLAN HANCOCK FLD (SMX)

**⚠** Circling Rwy 2 NA at night. When local altimeter setting not received, use SBP altimeter setting and increase all MDAs 60 feet and S-12 visibility Cat C/D to 1 ¼ SM. For inop ALS when using SBP altimeter setting, increase S-12 Cat C/D visibility to 1 ½ SM. For inop ALS, increase S-12 Cat C/D visibility to 1 ¾ SM.

**MALSR**  
 MISSED APPROACH: Climb to 1000 then climbing left turn to 5000 direct MQO VORTAC and hold.

ATIS <b>121.15</b>	SANTA BARBARA APP CON* <b>124.15 327.8</b>	SANTA MARIA TOWER* <b>118.3 (CTAF) 239.25</b>	GND CON <b>121.9</b>	UNICOM <b>122.95</b>
-----------------------	---	--	-------------------------	-------------------------



	A	B	C	D
S-12	740/24	510 (500-½)	740/55	510 (500-1)
CIRCLING	860-1 599 (600-1)	1000-1 739 (800-1)	1420-3 1159 (1200-3)	NA

# VOR RWY 12

SW-3, 14 MAY 2026 to 11 JUN 2026

SW-3, 14 MAY 2026 to 11 JUN 2026