

WAAS CH 97314 W19A	APP CRS 186°	Rwy Ldg 7002 TDZE 47 Apt Elev 50
----------------------------------------	------------------------	-------------------------------------------------------------

RNAV (GPS) RWY 19

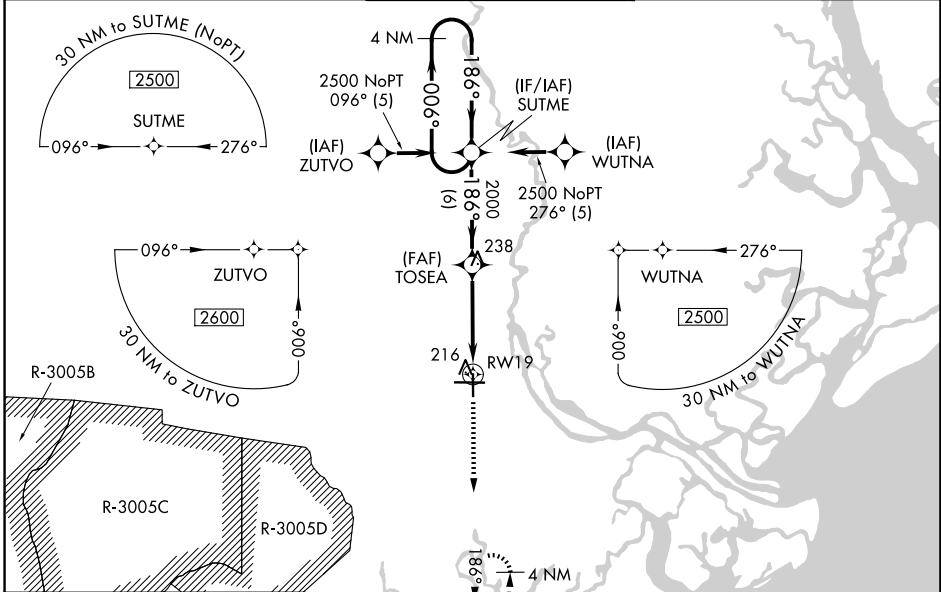
SAVANNAH/HILTON HEAD INTL (SAV)

RNP APCH-GPS.

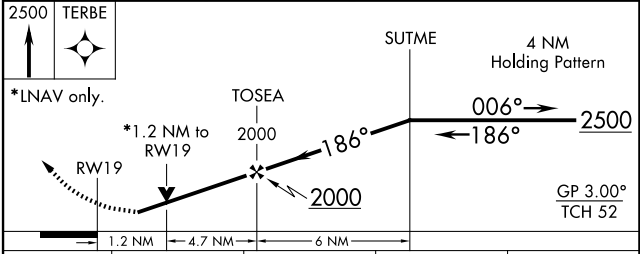
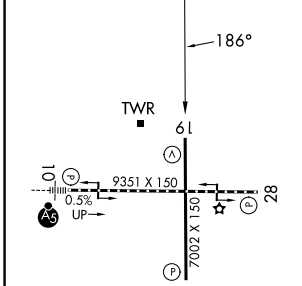
⚠ For uncompensated Baro-VNAV systems, LNAV/VNAV NA below -15°C or above 54°C.
⚠ When local altimeter setting not received, use Hilton Head Island altimeter setting and increase LPV DA to 378 feet; increase LNAV/VNAV DA to 532 feet and all visibilities ¼ SM; increase all MDAs 80 feet and LNAV visibility Cat C/D ½ SM, and Circling visibility Cat C/D ¼ SM. VDP and Baro-VNAV NA when using Hilton Head Island altimeter setting.

MISSED APPROACH: Climb to 2500 direct TERBE and hold.

ATIS 123.75	SAVANNAH APP CON* 125.3 371.875	SAVANNAH TOWER* 125.975 (CTAF) 0 257.8	GND CON 121.9 348.6	UNICOM 122.95
-----------------------	-------------------------------------------	--------------------------------------------------	-------------------------------	-------------------------



ELEV 50	D	TDZE 47
---------	----------	---------



CATEGORY	A	B	C	D
LPV DA	312-1		265 (300-1)	
LNAV/VNAV DA	466-1½		419 (500-1½)	
LNAV MDA	480-1	433 (500-1)	480-1¼ 433 (500-1¼)	480-1½ 433 (500-1½)
CIRCLING	520-1	470 (500-1)	740-2 690 (700-2)	740-2¼ 690 (700-2¼)

TDZL/RCLS Rwy 10
 REIL Rwy 19 and 28
 HIRL Rwy 1-19 and 10-28

SAVANNAH, GEORGIA
 Amdt 2B 06OCT22

32°08'N-81°12'W

SAVANNAH/HILTON HEAD INTL (SAV)

RNAV (GPS) RWY 19

SE-4, 14 MAY 2026 to 11 JUN 2026

SE-4, 14 MAY 2026 to 11 JUN 2026