


LOC/DME I-RMT <b>110.35</b> Chan 40 (Y)	APP CRS <b>126°</b>	Rwy Ldg <b>8279</b> TDZE <b>3963</b> Apt Elev <b>3967</b>
---	------------------------	---

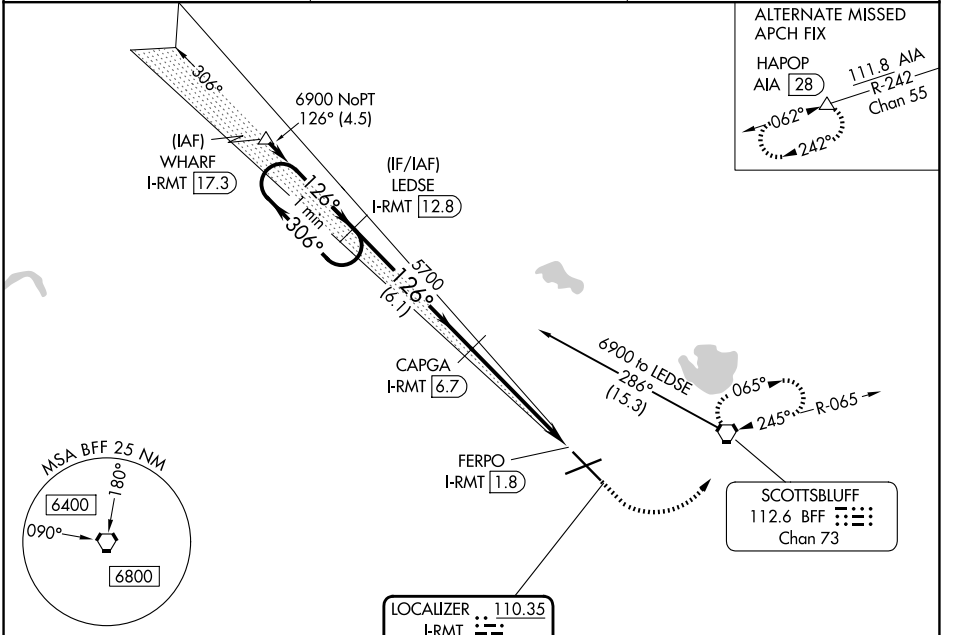
# ILS or LOC/DME RWY 12

SCOTTSBLUFF/WESTERN NEBRASKA RGNL/WM B HEILIG FLD (B'F'F')

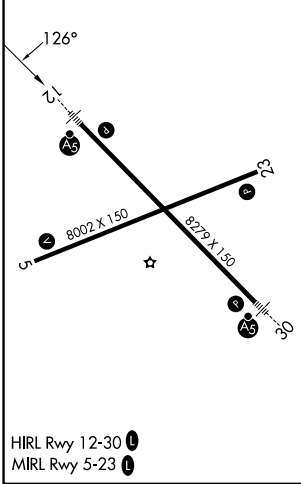
**⚠** When local altimeter setting not received, use Alliance altimeter setting and increase DA 91 feet; all MDAs 100 feet, and S-LOC 12 and Circling Cat B/C/D visibilities ¼ mile. For inoperative MALSR, when using Alliance altimeter setting, increase S-ILS 12 visibility to 1. VDP NA when using Alliance altimeter setting.

**MALSR**  **MISSED APPROACH:** Climb to 4500 then climbing left turn to 6900 direct BFF VORTAC and hold, continue climb-in-hold to 6900.

ASOS <b>121.025</b>	DENVER CENTER <b>127.95 338.2</b>	UNICOM <b>123.0 (CTAF) 0</b>
------------------------	--------------------------------------	---------------------------------

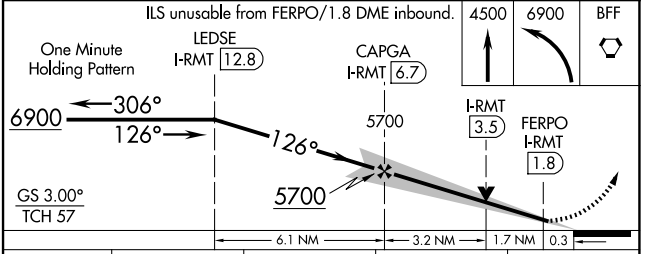


ELEV 3967	<b>D</b>	TDZE 3963
-----------	----------	-----------



SCOTTSBLUFF, NEBRASKA  
Orig-B 30JAN20

## DME REQUIRED



CATEGORY	A	B	C	D
S-ILS 12	4163-½ 200 (200-½)			
S-LOC 12	4640-½ 677 (700-½)	4640-1½ 677 (700-1½)	4640-1¾ 677 (700-1¾)	4640-1¾ 677 (700-1¾)
CIRCLING	4640-1 673 (700-1)	4640-2 673 (700-2)	4740-2½ 773 (800-2½)	4740-2½ 773 (800-2½)

SCOTTSBLUFF/WESTERN NEBRASKA RGNL/WM B HEILIG FLD (B'F'F')  
41°52'N-103°36'W

# ILS or LOC/DME RWY 12

NC-2, 14 MAY 2026 to 11 JUN 2026

NC-2, 14 MAY 2026 to 11 JUN 2026