


WAAS CH <b>73005</b> <b>W12A</b>	APP CRS <b>126°</b>	Rwy Ldg TDZE Apt Elev	<b>8279</b> <b>3963</b> <b>3967</b>
--	------------------------	-----------------------------	---

# RNAV (GPS) RWY 12

SCOTTSDLUFF/WESTERN NEBRASKA RGNL/WM B HEILIG FLD (B,F,F')

**⚠** When local altimeter setting not received, use Alliance altimeter setting and increase all DAs 91 feet and all MDAs 100 feet; increase LPV, LNAV/VNAV, LNAV Cat A/B and Circling Cat B visibilities ¼ mile; increase LNAV and Circling Cat C/D visibilities ½ mile. For inoperative MALSR, when using Alliance altimeter setting, increase LPV all Cats visibility to 1¼, and LNAV Cat A visibility to 1. For uncompensated Baro-VNAV systems, LNAV/VNAV NA below -22°C (-7°F) or above 41°C (105°F). Baro-VNAV NA when using Alliance altimeter setting. VDP NA when using Alliance altimeter setting. DME/DME RNP-0.3 NA.

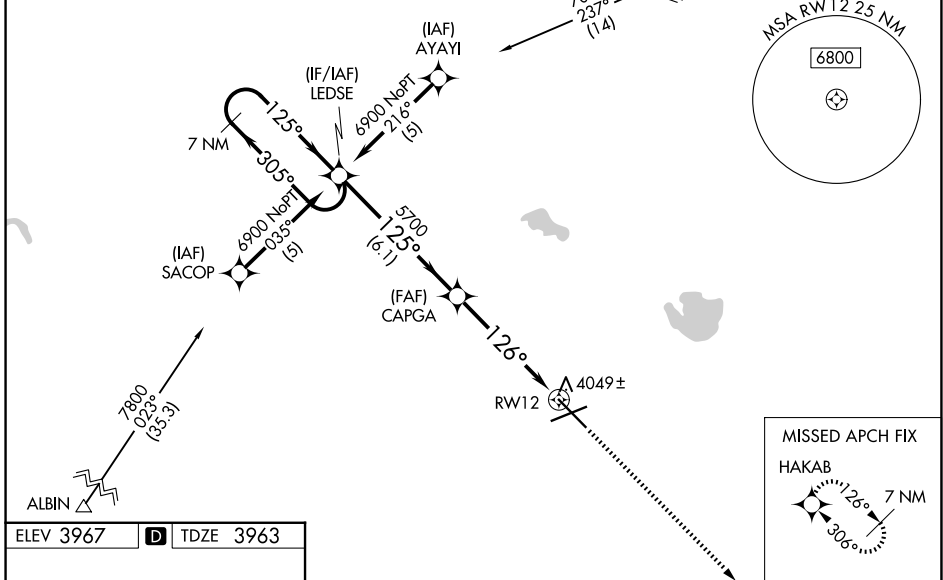
**MALSR**



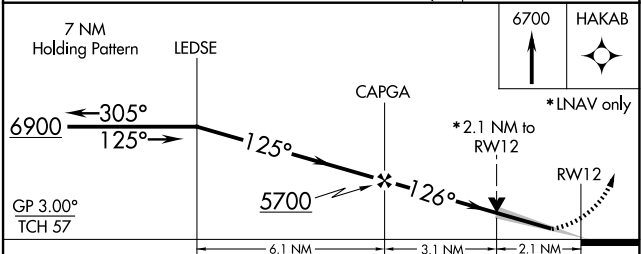
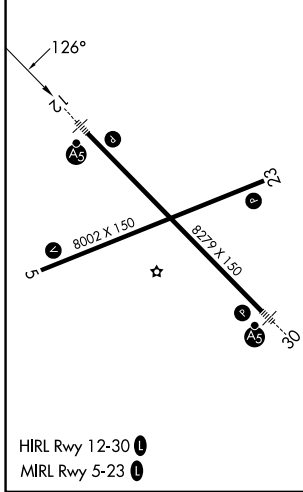
**MISSED APPROACH:**  
Climb to 6700 direct HAKAB and hold.

ASOS <b>121.025</b>	DENVER CENTER <b>127.95 338.2</b>	UNICOM <b>123.0 (CTAF) 0</b>
------------------------	--------------------------------------	---------------------------------

Procedure NA for arrivals at ALBIN V81 southwest bound and arrivals at SPONS V81-V169 northbound.



ELEV 3967	<b>D</b>	TDZE 3963
-----------	----------	-----------



CATEGORY	A	B	C	D
LPV DA	4213-½ 250 (300-½)			
LNAV/VNAV DA	4340-¾ 377 (400-¾)			
LNAV MDA	4700-½ 737 (800-½)	4700-1½ 737 (800-1½)	4700-1¾ 737 (800-1¾)	4700-1¾ 737 (800-1¾)
CIRCLING	4700-1 733 (800-1)	4700-2 733 (800-2)		4740-2½ 773 (800-2½)

# RNAV (GPS) RWY 12

NC-2, 14 MAY 2026 to 11 JUN 2026

NC-2, 14 MAY 2026 to 11 JUN 2026