

WAAS CH 93506 W05A	APP CRS 061°	Rwy Ldg TDZE Apt Elev	8002 3952 3967
--	------------------------	-----------------------------	---

RNAV (GPS) RWY 5

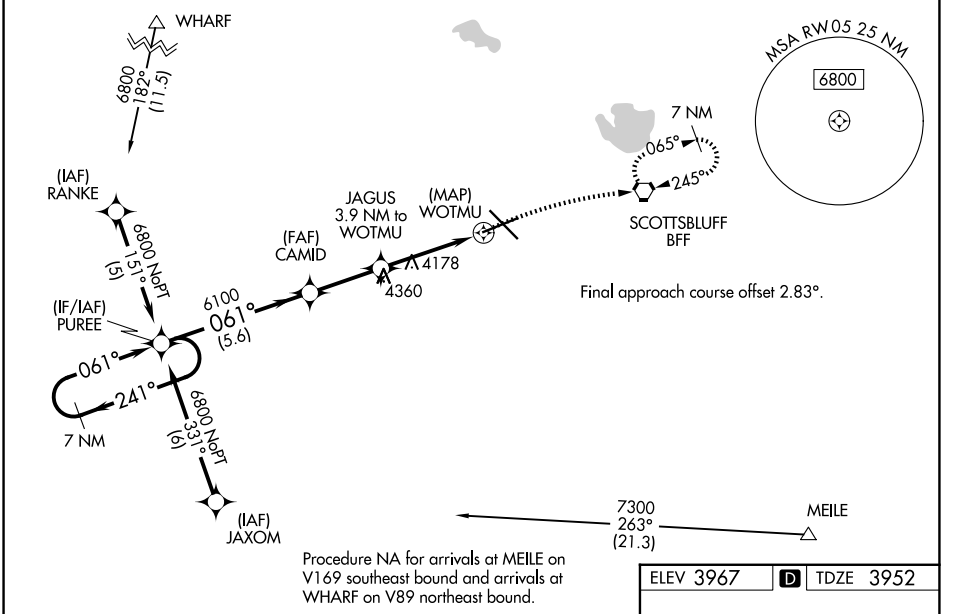
SCOTTSLUFF/WESTERN NEBRASKA RGNL/WM B HEILIG FLD (BTF)

RNP APCH.

⚠ Baro-VNAV NA when using Alliance altimeter setting. For uncompensated Baro-VNAV systems, LNAV/VNAV NA below -22°C (-7°F) or above 51°C (124°F). When local altimeter setting not received, use Alliance altimeter setting and increase all DA 91 feet and all MDA 100 feet; increase LPV all Cats visibility 3/8 mile, LNAV/VNAV all Cats visibility 1/4 mile, LNAV Cats C/D visibility 1/4 mile, Circling Cat C visibility 1/2 mile and Cat D visibility 1/4 mile.

⚠ MISSED APPROACH: Climb to 4400 then climbing right turn to 6900 direct BFF VORTAC and hold, continue climb-in-hold to 6900.

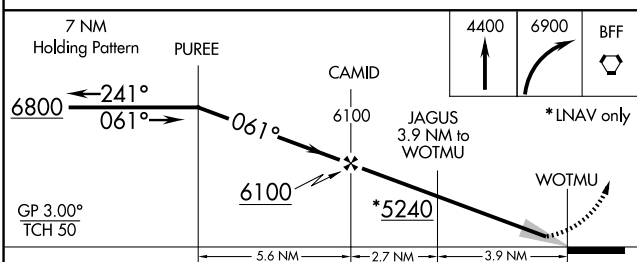
ASOS 121.025	DENVER CENTER 127.95 338.2	UNICOM 123.0 (CTAF) 0
------------------------	--------------------------------------	---------------------------------



NC-2, 14 MAY 2026 to 11 JUN 2026

NC-2, 14 MAY 2026 to 11 JUN 2026

Procedure NA for arrivals at MEILE on V169 southeast bound and arrivals at WHARF on V89 northeast bound.



ELEV 3967	D TDZE 3952
-----------	--------------------

4400	6900	BFF
------	------	-----

GP 3.00°	TCH 50
----------	--------

7 NM	5.6 NM	2.7 NM	3.9 NM
------	--------	--------	--------

CATEGORY	A	B	C	D
LPV DA		4202-1	250 (300-1)	
LNAV/VNAV DA		4418-1 1/8	466 (500-1 1/8)	
LNAV MDA	4480-1	528 (600-1)	4480-1 1/2	528 (600-1 1/2)
CIRCLING	4500-1	533 (600-1)	4560-1 1/2	4720-2 1/2
			593 (600-1 1/2)	753 (800-2 1/2)

HIRL Rwy 12-30 **0**
MIRL Rwy 5-23 **0**