

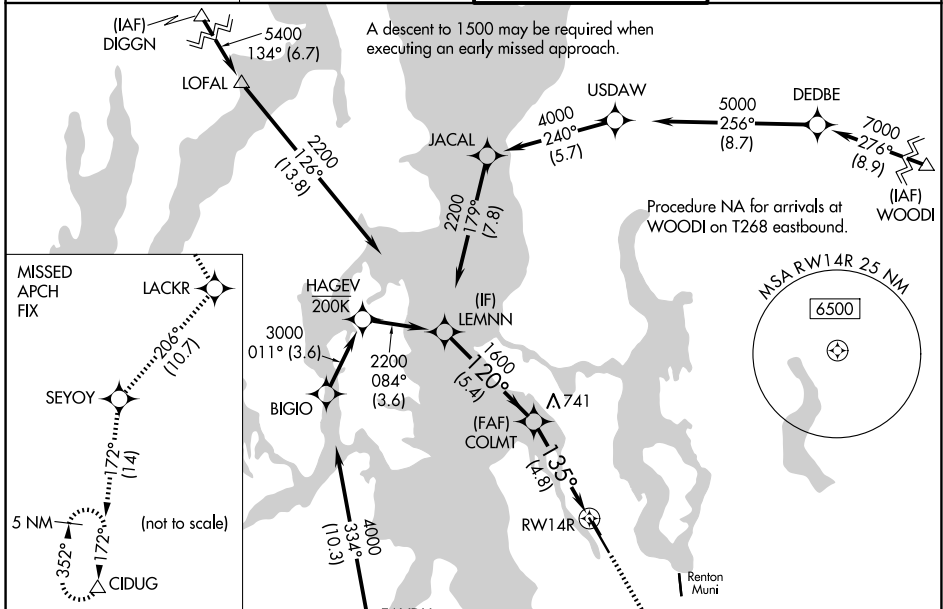
APP CRS	Rwy Ldg	<b>9120</b>
<b>135°</b>	TDZE	<b>18</b>
	Apt Elev	<b>22</b>

# RNAV (RNP) Z RWY 14R

BOEING FLD/KING COUNTY INTL (BFI)

RNP AR APCH - GPS. Authorization required.	<b>MALSF</b> 	<b>MISSED APPROACH:</b> Climb direct OCEZE, cross OCEZE at 1500, then climb to 5000 on the RNAV missed approach route to CIDUG and hold.
RADAR required for missed approach.		
For uncompensated Baro-VNAV systems, procedure NA below -6°C or above 54°C. For inop ALS, increase RNP 0.15 visibility to 1 3/8 SM.		

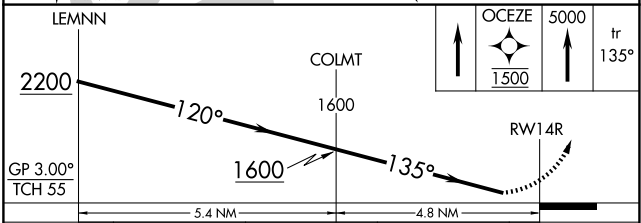
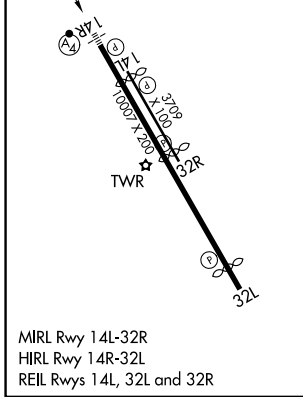
<b>ATIS</b> <b>127.75</b>	<b>SEATTLE APP CON</b> <b>125.9 306.9</b>	<b>BOEING TOWER</b> <b>120.6 257.8</b>	<b>GND CON</b> <b>121.9</b>
------------------------------	--	---	--------------------------------



NW-1, 14 MAY 2026 to 11 JUN 2026

NW-1, 14 MAY 2026 to 11 JUN 2026

ELEV 22	<b>D</b>	TDZE 18
---------	----------	---------



CATEGORY	A	B	C	D
RNP 0.10 DA		448/50	430 (500-1)	
RNP 0.15 DA		522-1 1/4	504 (500-1 1/4)	
RNP 0.30 DA		708-1 3/4	690 (700-1 3/4)	

## AUTHORIZATION REQUIRED