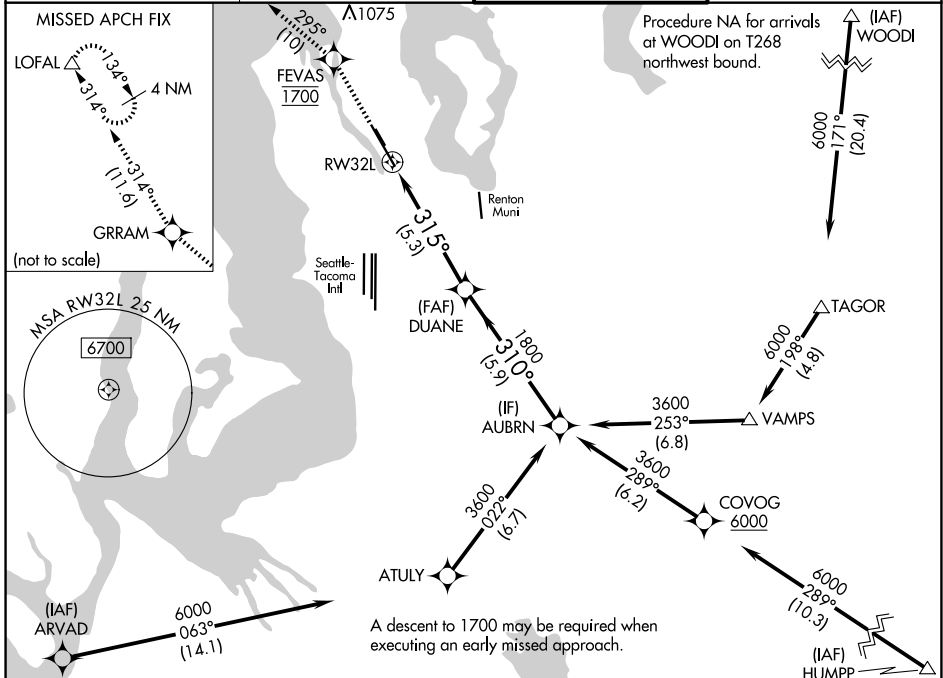


APP CRS 315°	Rwy Ldg TDZE 22	9120
	Apt Elev 22	

RNAV (RNP) Z RWY 32L

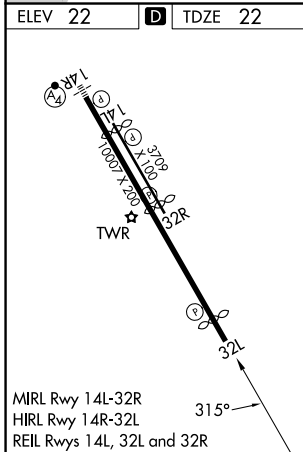
BOEING FLD/KING COUNTY INTL (BFI)

RNP AR APCH - GPS. Authorization required.		MISSED APPROACH: Climb direct FEVAS, cross FEVAS at 1700, then climb to 3000 on the RNAV missed approach route to LOFAL and hold.	
RADAR required for missed approach.			
<p>▼ For uncompensated Baro-VNAV systems, procedure NA below -6°C or above 54°C.</p> <p>▲</p>			
ATIS 127.75	SEATTLE APP CON 125.9 306.9	BOEING TOWER 120.6 257.8	GND CON 121.9



NW-1, 14 MAY 2026 to 11 JUN 2026

NW-1, 14 MAY 2026 to 11 JUN 2026



↑ FEVAS 1700	↑ 3000 tr 295°	GRRAM tr 314°	LOFAL △	AUBRN
VGSI and RNAV glidepath not coincident (VGSI Angle 3.10/TCH 66).				
CATEGORY	A	B	C	D
RNP 0.10 DA		567-1 $\frac{7}{8}$	545 (600-1 $\frac{7}{8}$)	
RNP 0.15 DA		681-1 $\frac{7}{8}$	659 (700-1 $\frac{7}{8}$)	
RNP 0.30 DA		836-2 $\frac{1}{2}$	814 (900-2 $\frac{1}{2}$)	
AUTHORIZATION REQUIRED				