

WAAS CH 89057 W32A	APP CRS 315°	Rwy Ldg TDZE Apt Elev	9120 22 22
--	------------------------	-----------------------------	---------------------------------------

RNAV (GPS) Y RWY 32L

BOEING FLD/KING COUNTY INTL (BFI)

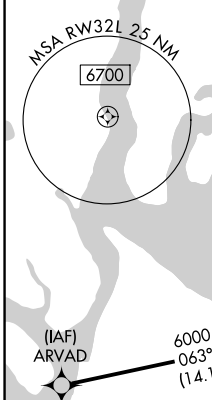
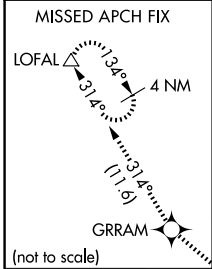
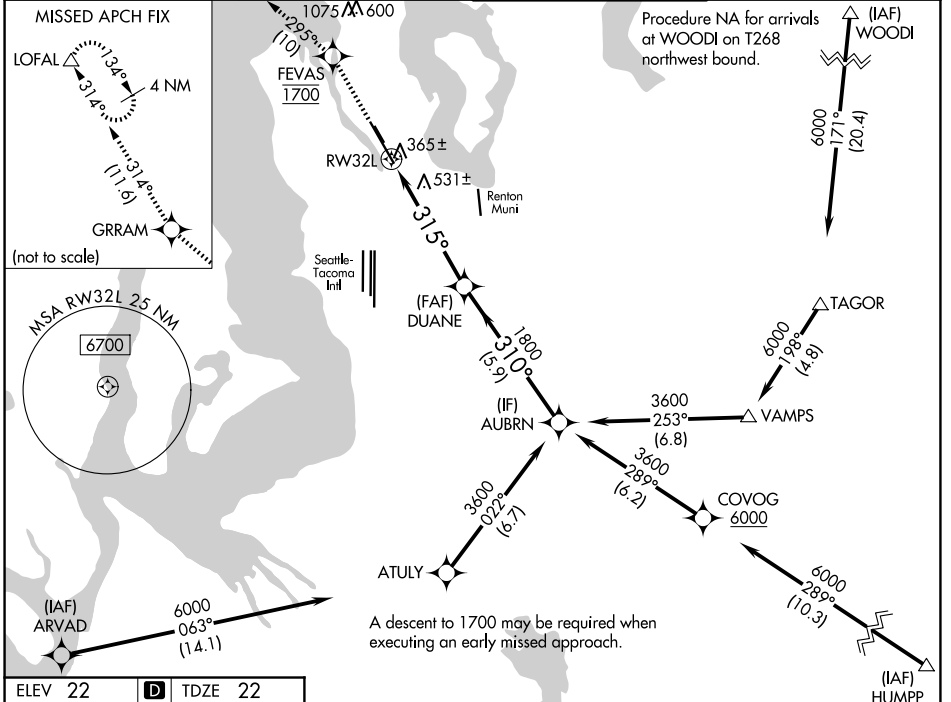
RNP APCH - GPS.

RADAR required for missed approach.

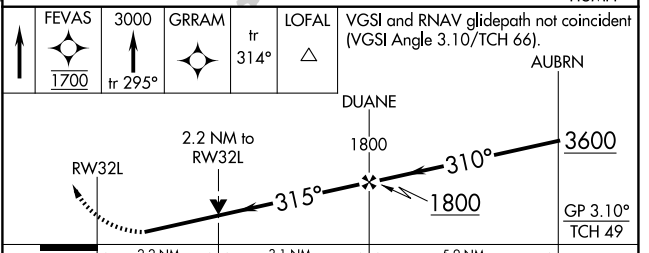
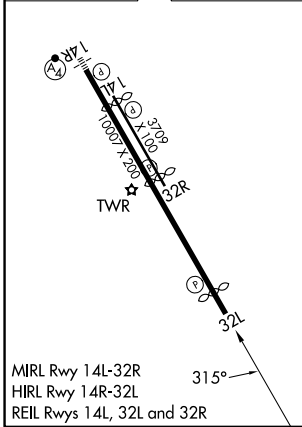
⚠ For uncompensated Baro-VNAV systems, LNAV/VNAV NA below -6°C or above 54°C. Rwy 32L helicopter visibility reduction below ¼ SM NA.

MISSED APPROACH: Climb direct FEVAS, cross FEVAS at 1700, then climb to 3000 on the RNAV missed approach route to LOFAL and hold.

ATIS 127.75	SEATTLE APP CON 125.9 306.9	BOEING TOWER 120.6 257.8	GND CON 121.9
-----------------------	---------------------------------------	------------------------------------	-------------------------



ELEV 22	D	TDZE 22
---------	----------	---------



CATEGORY	A	B	C	D
LPV DA		478-1 3/8	456 (500-1 3/8)	
LNAV/VNAV DA		884-2 1/2	862 (900-2 1/2)	
LNAV MDA	800-1 778 (800-1)	800-1 1/4 778 (800-1 1/4)	800-2 1/2	778 (800-2 1/2)

NW-1, 14 MAY 2026 to 11 JUN 2026

NW-1, 14 MAY 2026 to 11 JUN 2026