

APP CRS	Rwy Ldg	<b>5234</b>
<b>185°</b>	TDZE	<b>62</b>
	Apt Elev	<b>62</b>

# RNAV (RNP) RWY 19

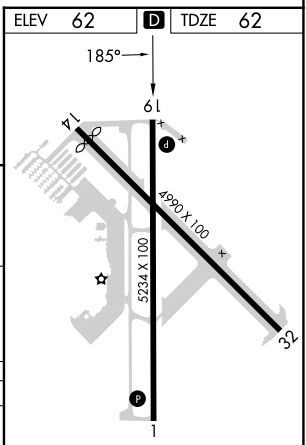
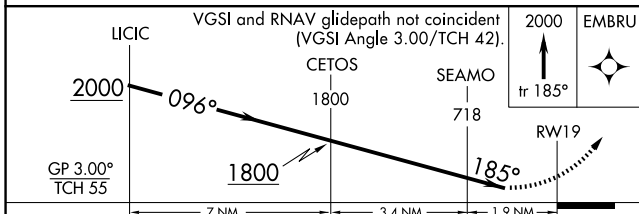
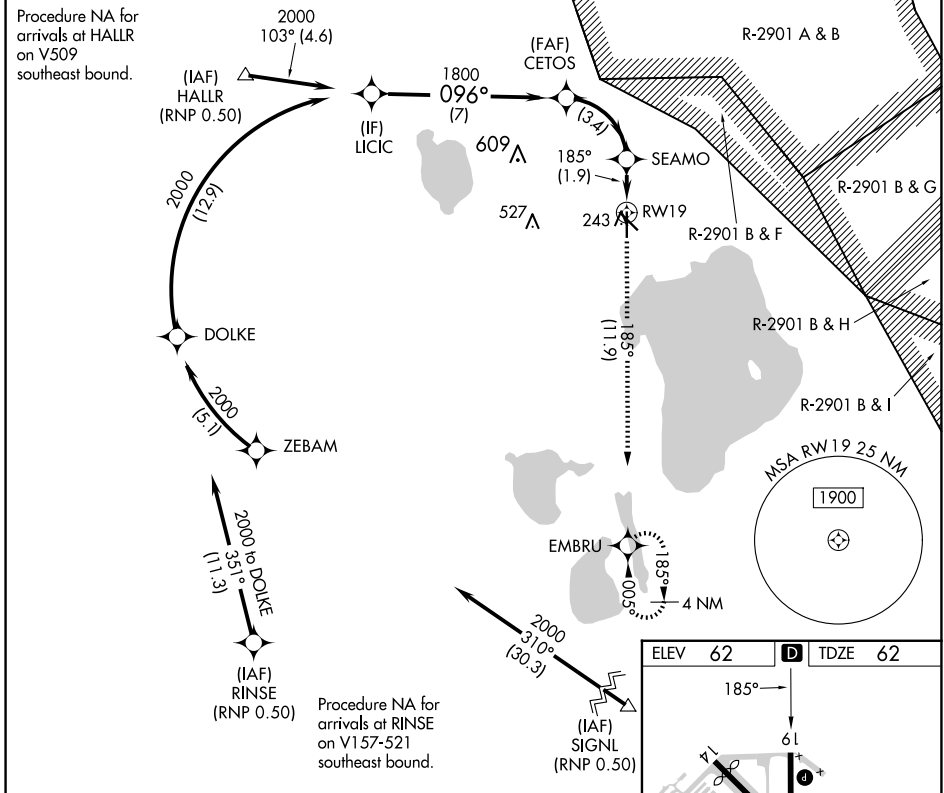
SEBRING RGNL (SEF)

RNP AR APCH GPS.

**NA** For uncompensated Baro-VNAV systems, procedure NA below -15°C or above 54°C.

MISSED APPROACH: Climb to 2000 on track 185° to EMBRU and hold.

AWOS-3 <b>119.475</b>	MIAMI CENTER <b>134.55 257.7</b>	UNICOM <b>122.7 (CTAF)</b>
--------------------------	-------------------------------------	-------------------------------



CATEGORY	A	B	C	D
RNP 0.30 DA	440-1¼		378 (400-1¼)	

**AUTHORIZATION REQUIRED**

MIRL Rwy 1-19  
REIL Rwy 1 and 19

SE-3, 14 MAY 2026 to 11 JUN 2026

SE-3, 14 MAY 2026 to 11 JUN 2026