

WAAS CH 69435 W15A	APP CRS 149°	Rwy Ldg 8014 TDZE 166 Apt Elev 166
---------------------------------	------------------------	---

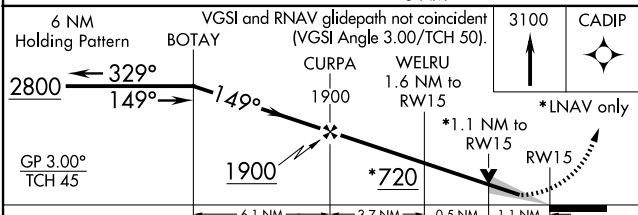
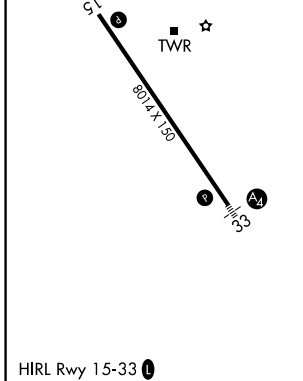
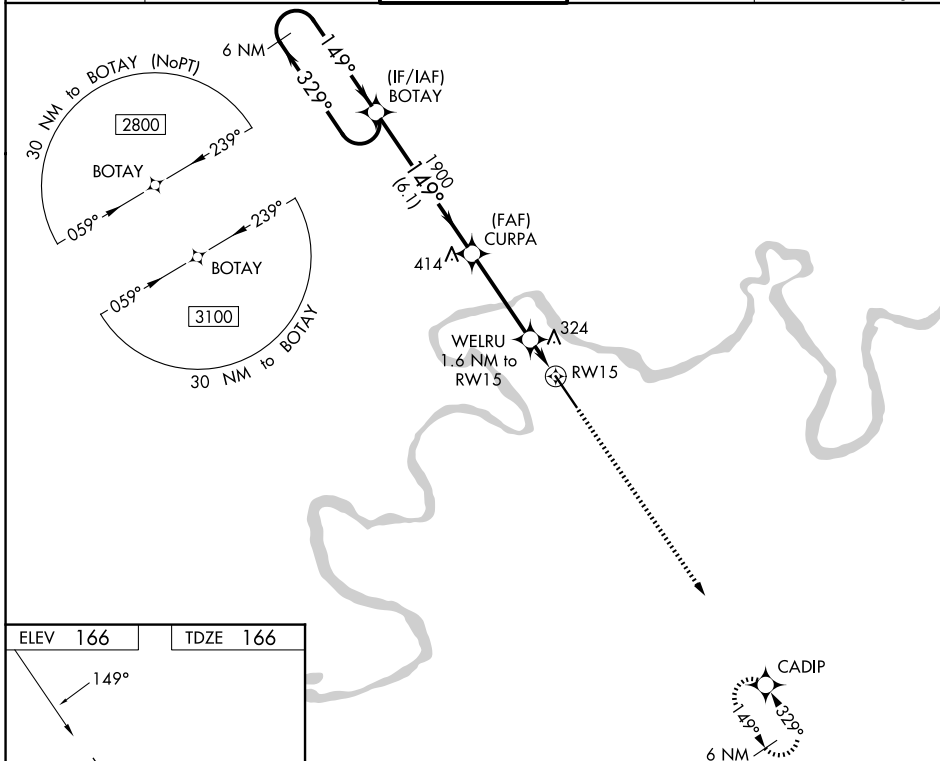
RNAV (GPS) RWY 15

CRAIG FLD (SEM)

⚠ Baro-VNAV NA when using Montgomery altimeter setting. For uncompensated Baro-VNAV systems, LNAV/VNAV NA below -15°C (5°F) or above 54°C (130°F). DME/DME RNP-0.3 NA. VDP NA with Montgomery altimeter setting. When local altimeter setting not received, use Montgomery altimeter setting and increase all DA 78 feet, all MDA 80 feet, LPV all Cats visibility 3/8 mile, LNAV/VNAV all Cats visibility and LNAV Cats C and D visibility 1/4 mile, Circling Cat C visibility 1/2 mile and Cat D visibility 1/4 mile.

MISSED APPROACH:
Climb to 3100 direct CADIP and hold.

AWOS-3PT 119.15	MONTGOMERY APP CON* 124.0 363.025	CRAIG TOWER* 120.85	GND CON 121.675	UNICOM 122.7 (CTAF) 0
---------------------------	---	-------------------------------	---------------------------	---------------------------------



CATEGORY	A	B	C	D
LPV DA	416-3/4		250 (300-3/4)	
LNAV/VNAV DA	569-1 3/8		403 (500-1 3/8)	
LNAV MDA	560-1		394 (400-1)	
CIRCLING	660-1	760-1	760-1 1/2	1040-2 3/4
	494 (500-1)	594 (600-1)	594 (600-1 1/2)	874 (900-2 3/4)

SE-4, 14 MAY 2026 to 11 JUN 2026

SE-4, 14 MAY 2026 to 11 JUN 2026