

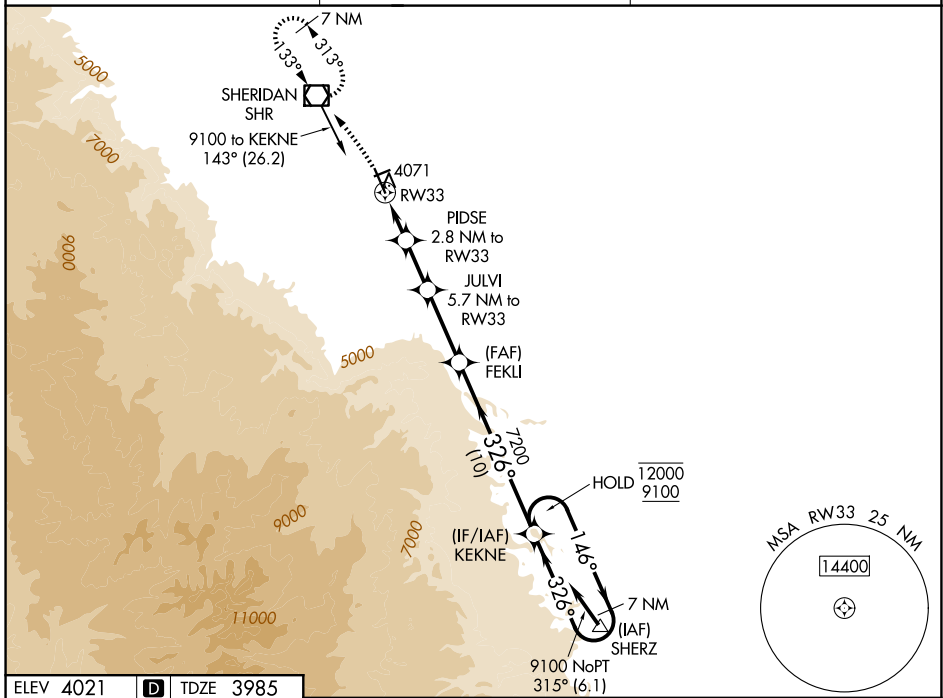
WAAS CH 65699 W33A	APP CRS 326°	Rwy Ldg TDZE Apt Elev	8301 3985 4021
--	------------------------	-----------------------------	---

RNAV (GPS) RWY 33

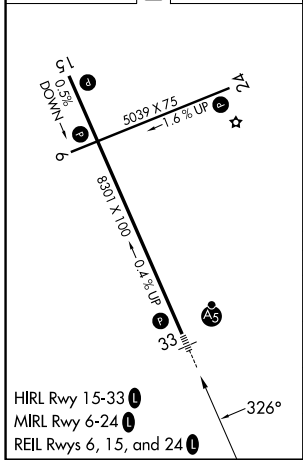
SHERIDAN COUNTY (SHR)

RNP APCH. Circling to Rwy 24 NA at night. Baro-VNAV NA. When local altimeter setting not received, procedure NA. -18°C	MALSRR MISSED APPROACH: Climbing left turn to 7300 direct SHR VOR/DME and hold, continue climb-in-hold to 7300.
---	--

ASOS 135.175	SALT LAKE CENTER 127.75 351.9	UNICOM 123.0 (CTAF)
------------------------	---	-------------------------------



ELEV 4021		TDZE 3985
-----------	--	-----------



7300	SHR								
		PIDSE	JULVI	FEKLI	KEKNE				
		2.8 NM to RW33	5.7 NM to RW33	7200	7 NM Holding Pattern				
		*1.1 NM to RW33							
		4920*	5840*	7200	7200	12000	9100		
		1.1	1.7 NM	2.9 NM	4.3 NM	10 NM			
								GP 3.00°	TCH 55
CATEGORY		A	B	C	D				
LPV DA			4205-1/2	220 (200-1/2)					
LNAV/VNAV DA			4380-3/4	395 (400-3/4)					
LNAV MDA		4380-1/2	395 (400-1/2)	4380-5/8	395 (400-5/8)				
CIRCLING		4600-1	4640-1	4860-2 1/2	5220-3				
		579 (600-1)	619 (700-1)	839 (900-2 1/2)	1199 (1200-3)				

NW-1, 14 MAY 2026 to 11 JUN 2026

NW-1, 14 MAY 2026 to 11 JUN 2026