

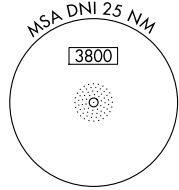
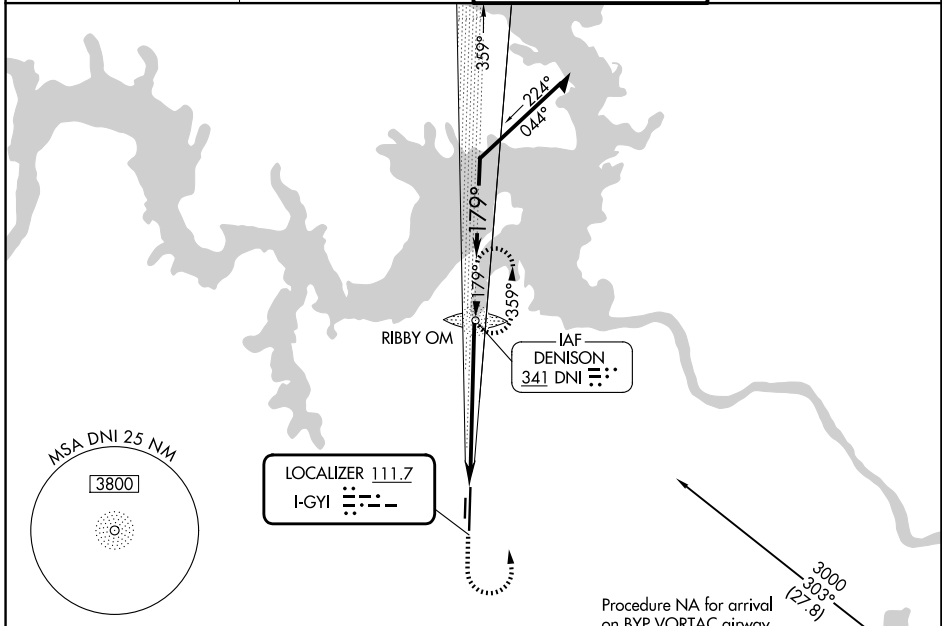
LOC I-GYI <b>111.7</b>	APP CRS <b>179°</b>	Rwy Ldg <b>9000</b> TDZE <b>741</b> Apt Elev <b>749</b>
---------------------------	------------------------	---

# ILS or LOC RWY 18L

NORTH TEXAS RGNL/PERRIN FLD (GYI)

ADF required.	MALSR 	MISSED APPROACH: Climb to 2000 then climbing left turn to 2800 direct DNI NDB and hold.
Circling Rwy 18R, 36L NA at night. Autopilot coupled approach NA below 1900. For inop ALS, increase S-LOC-18L Cat C/D visibility to 1 3/8 SM.		

ATIS <b>118.775</b>	FORT WORTH CENTER <b>124.75 323.0</b>	NORTH TEXAS TOWER ★ <b>120.575 (CTAF) 233.7</b>	GND CON <b>124.125</b>
------------------------	--	--	---------------------------

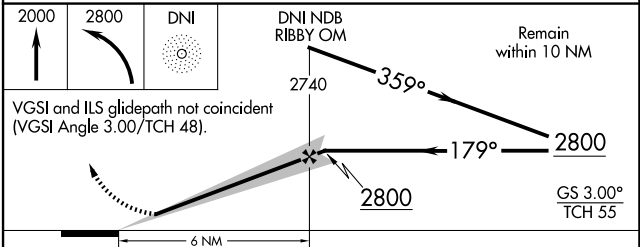
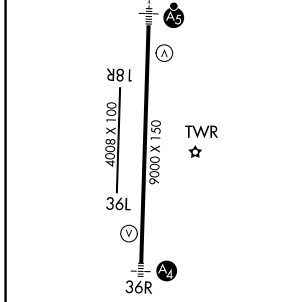


LOCALIZER 111.7  
I-GYI

IAF DENISON  
341 DNI

BONHAM  
114.6 BYP  
Chan 93

ELEV 749	TDZE 741
179°	



	2000	2800	DNI	DNI NDB RIBBY OM	Remain within 10 NM
	VGSI and ILS glidepath not coincident (VGSI Angle 3.00/TCH 48).				
CATEGORY	A	B	C	D	
S-ILS 18L	941-1/2		200 (200-1/2)		
S-LOC 18L	1220-1/2	479 (500-1/2)	1220-1	479 (500-1)	
CIRCLING	1300-1	551 (600-1)	1400-1 3/4 651 (700-1 3/4)	1540-2 1/2 791 (800-2 1/2)	

MIRL Rwy 18L-36R					
FAF to MAP 6 NM					
Knots	60	90	120	150	180
Min:Sec	6:00	4:00	3:00	2:24	2:00

SC-2, 14 MAY 2026 to 11 JUN 2026

SC-2, 14 MAY 2026 to 11 JUN 2026